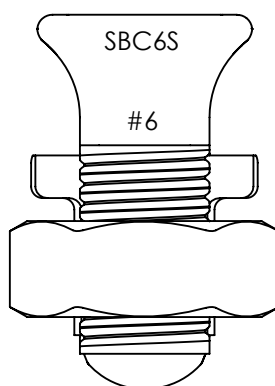
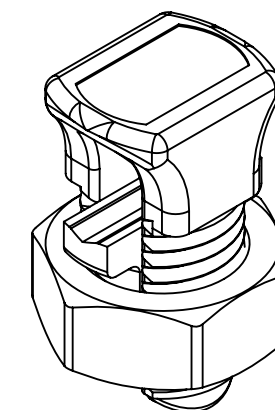
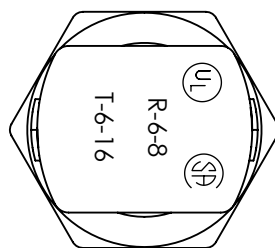
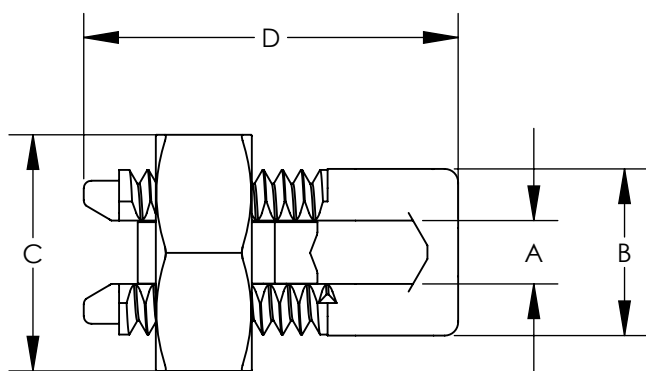


NOTES:

1. HIGH STRENGTH ELECTROLYTIC COPPER HIGHLY RESISTANT TO CORROSION AND SEASON CRACKING.
2. FOR COPPER AND COPPERWELD WIRES ONLY.
3. *CONNECTOR CAN BE USED WITH THREE WIRES.
4. PARTS ARE UL LISTED TO UL467 AND UL486. PARTS ARE CSA CERTIFIED.
5. PARTS ARE SUITABLE FOR DIRECT BURIAL.



PART NUMBER	COPPER CONDUCTOR								APPROXIMATE DIMENSIONS - INCHES				REQUIRED TORQUE (IN-LB)
	MAXIMUM RUN TO MAXIMUM TAP		MINIMUM RUN TO MINIMUM TAP		MAXIMUM RUN TO MINIMUM TAP		MINIMUM EQUAL		A	B	C	D	
	RUN	TAP	RUN	TAP	RUN	TAP	RUN	TAP					
SBC8	8 STR 8 SOL	8 STR 8 SOL	10 STR 10 SOL	16 STR 16 SOL	8 STR 8 SOL	16 STR 16 SOL	10 STR 10 SOL	10 STR 10 SOL	0.14	0.39	0.55	0.86	80
SBC6S	6 SOL	6 SOL	8 STR 8 SOL	16 STR 16 SOL	6 SOL	16 SOL	8 STR 8 SOL	8 STR 8 SOL	0.16	0.41	0.62	0.95	165
*SBC6SL									0.17	0.41	0.63	1.10	
SBC4S	6 STR 6 SOL	6 STR 6 SOL	8 STR 8 SOL	14 STR 14 SOL	6 STR 6 SOL	14 STR 14 SOL	8 STR 8 SOL	8 STR 8 SOL	0.21	0.45	0.69	0.98	165
*SBC4SL									0.22	0.45	0.69	1.30	
SBC3	4 STR 4 SOL	4 STR 4 SOL	6 STR 6 SOL	14 STR 14 SOL	4 STR 4 SOL	14 STR 14 SOL	8 STR 8 SOL	8 STR 8 SOL	0.27	0.58	0.81	1.16	275
SBC2	2 STR 2 SOL	2 STR 2 SOL	6 STR 6 SOL	14 STR 14 SOL	2 STR 2 SOL	14 STR 14 SOL	6 STR 6 SOL	6 STR 6 SOL	0.31	0.59	0.86	1.23	275
SBC1/0	1/0 STR 1/0 SOL	1/0 STR 1/0 SOL	2 STR 2 SOL	14 STR 14 SOL	1/0 STR 1/0 SOL	14 STR 14 SOL	4 STR 4 SOL	4 STR 4 SOL	0.37	0.75	0.93	1.55	385
SBC2/0	2/0 STR 2/0 SOL	2/0 STR 2/0 SOL	1 STR 1 SOL	14 STR 14 SOL	2/0 STR 2/0 SOL	14 STR 14 SOL	2 STR 2 SOL	2 STR 2 SOL	0.42	0.79	1.05	1.72	385
SBC3/0	3/0 STR 3/0 SOL	3/0 STR 3/0 SOL	2/0 STR	8 STR	3/0 STR 3/0 SOL	8 STR 8 SOL	1 STR 1 SOL	1 STR 1 SOL	0.53	0.95	1.24	2.07	500
SBC250	250 STR	250 STR	4/0 STR 4/0 SOL	8 STR 8 SOL	250 STR	8 STR	1 STR 1 SOL	1 STR 1 SOL	0.58	1.03	1.36	2.09	650
SBC350	350 STR	350 STR	350 STR 350 SOL	1/0 STR 1/0 SOL	350 STR	1/0 STR	2/0 STR 2/0 SOL	2/0 STR 2/0 SOL	0.70	1.16	1.48	2.42	650
SBC500	500 STR	500 STR	500 STR 500 SOL	2/0 STR 2/0 SOL	500 STR	2/0 STR	300 STR	300 STR	0.81	1.33	1.74	2.83	825

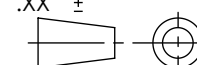


REV	DATE	BY	CHK	APR	DESCRIPTION	ECN
08	4/21	JHNU	JHNU	JADE	REVISED TABLE	098940
07	10/15	JHNU	JHNU	RGB	REVISED MARKING LOCATION ADDED NOTE TO SPECIFY PARTS ARE UL 486 AND UL467	N10850BM-C41512
06	10/13	JHNU	JHNU	RGB	REVISED MAX RUN & TAP FOR SBC6S-C: 6 STR WAS 6 SOL	N10850BM-C41512
05	3/13	JHNU	JHNU	RGB	REVISED TITLE BLOCK	N10850BM-C41512

TITLE		SBC SERIES - COPPER SPLIT BOLT CONNECTOR CUSTOMER DRAWING	
ITEM REVISION NAME	N10850BM-C41512/08		
DATASET FILE NAME	C41512/08.SLDDRW		
UNLESS OTHERWISE SPECIFIED, DIMENSIONAL TOLERANCES ARE: IN [mm]		MATERIAL	
.X ± .XX ±		.XXX ± ANGLES ±	
DRAWN BY JHNU		DATE 3/06	CHK JAC
SCALE NONE		DRAWING NUMBER C41512	
SHEET 1 OF 1		SIZE B	



SEE NOTES



THIRD ANGLE
PROJECTION