

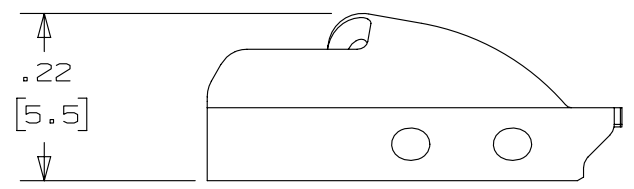
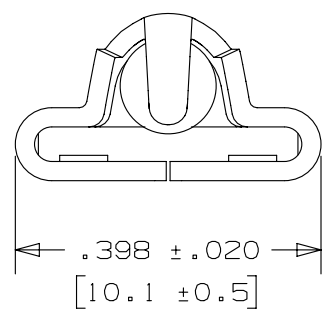
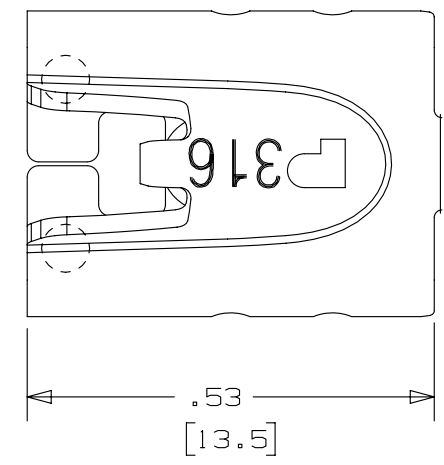
2

1

THIS COPY IS PROVIDED ON A RESTRICTED BASIS AND IS NOT TO BE USED IN ANY WAY DETRIMENTAL TO THE INTERESTS OF PANDUIT CORP.

NOTES:

1. TO BE USED WITH PANDUIT POLYESTER COATED METAL BANDING MBCH-QR316
2. APPLICATION TOOL: GS4MT, ST2MT, PPTMT, ST3MT, OR HTMT
3. TOOL TENSION SETTING: 4 TO 8 (GS4MT AND PPTMT ONLY)
4. DIMENSIONS IN [] ARE MILLIMETERS
5. MINIMUM LOOP TENSILE STRENGTH: 250 LBS (1112 N)
6. TOLERANCES:
 - .X = ±.030 [.762]
 - .XX = ±.020 [.508]
 - .XXX = ±.010 [.254]
 - ANGLES = ±2°



REV	DATE	BY	CHK	APR	DESCRIPTION	ECN
01A	4/13	JAMB	MIM	RGRO	UPDATE DRAWING TO NEW GLOBAL PANDUIT TITLE BLOCK WITH PANDUIT LOGO	SSECN01049
00A	5/05	JAMB	EJD	SKB	DRAWING RELEASED	12675

TITLE METAL TIE HEAD HEAVY PART NO. MTHCH-C316					
CUSTOMER DRAWING					
ITEM REVISION NAME N41212BS/01			PANDUIT		
DATASET FILE NAME N41212BS_DC/01A					
UNLESS OTHERWISE SPECIFIED, DIMENSIONAL TOLERANCES ARE: IN [mm]			MATERIAL: 316 STAINLESS STEEL		
.x ± .1 [2.54]		.xxx ± .005 [.127]		DRAWING NUMBER: N41212BS_DC	
.xx ± .01 [.25]		ANGLES ± 5 °		THIRD ANGLE PROJECTION	
DRAWN BY JAMB	DATE 5/05	CHK EJD	SCALE 4:1	SHT 1 OF 1	
				SIZE A	

2

1