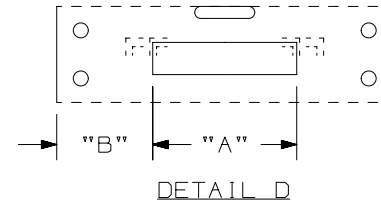
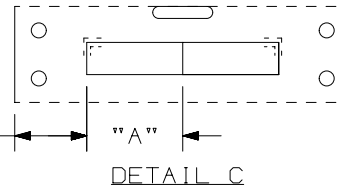
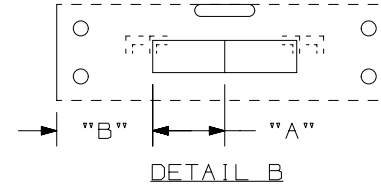
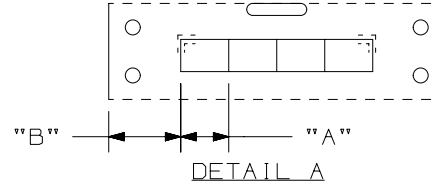
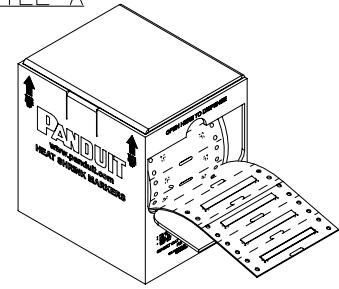


THIS COPY IS PROVIDED ON A RESTRICTED BASIS AND IS NOT TO BE USED IN ANY WAY DETRIMENTAL TO THE INTERESTS OF PANDUIT CORP.

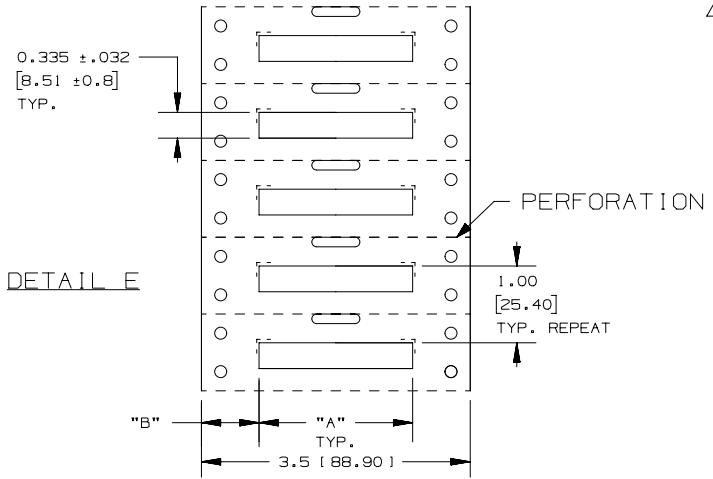
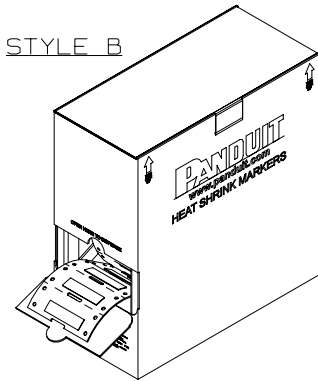
PART NUMBER	SEE DETAIL	"A" +/- .062	"B"	MARKER ACROSS	TUBING COLOR	SEE STYLE	MARKERS PER ROLL
H050X034H1T	A	0.50 [12.70]	0.75 [19.05]	4	WHITE	A	2000
H075X034H1T	B	0.75 [19.05]	1.00 [25.40]	2			1000
H100X034H1T	C	1.00 [25.40]	0.75 [19.05]	2			1000
H150X034H1T	D	1.50 [38.10]	1.00 [25.40]	1			500
H200X034H1T	E	2.00 [50.80]	0.75 [19.05]	1			500
H050X034H2T	A	0.50 [12.70]	0.75 [19.05]	4	YELLOW	A	2000
H075X034H2T	B	0.75 [19.05]	1.00 [25.40]	2			1000
H100X034H2T	C	1.00 [25.40]	0.75 [19.05]	2			1000
H150X034H2T	D	1.50 [38.10]	1.00 [25.40]	1			500
H200X034H2T	E	2.00 [50.80]	0.75 [19.05]	1			500
H050X034H3T	A	0.50 [12.70]	0.75 [19.05]	4	BLACK	A	2000
H075X034H3T	B	0.75 [19.05]	1.00 [25.40]	2			1000
H100X034H3T	C	1.00 [25.40]	0.75 [19.05]	2			1000
H150X034H3T	D	1.50 [38.10]	1.00 [25.40]	1			500
H200X034H3T	E	2.00 [50.80]	0.75 [19.05]	1			500
H050X034H4T	A	0.50 [12.70]	0.75 [19.05]	4	RED	A	2000
H075X034H4T	B	0.75 [19.05]	1.00 [25.40]	2			1000
H100X034H4T	C	1.00 [25.40]	0.75 [19.05]	2			1000
H150X034H4T	D	1.50 [38.10]	1.00 [25.40]	1			500
H200X034H4T	E	2.00 [50.80]	0.75 [19.05]	1			500
H050X034H1T-B	A	0.50 [12.70]	0.75 [19.05]	4	WHITE	B	10000
H075X034H1T-B	B	0.75 [19.05]	1.00 [25.40]	2			5000
H100X034H1T-B	C	1.00 [25.40]	0.75 [19.05]	2			5000
H150X034H1T-B	D	1.50 [38.10]	1.00 [25.40]	1			2500
H200X034H1T-B	E	2.00 [50.80]	0.75 [19.05]	1			2500

NOTES:
1. DIMENSIONS IN [] ARE IN MILLIMETERS.

STYLE A



STYLE B



REV	DATE	BY	CHK	APR	DESCRIPTION	ECN
8	4/29/15	RVU	SEWH	JHAC	ADD NEW COLUMN OF MARKERS PER ROLL.	GAECN02784
7	1/20/15	RVU	SEWH	MSAD	REVISE OLD LOGO TO CURRENT PANDUIT LOGO.	GAECN02540
6	4/12/12	RVU			REVISED H150 PARTS TO SHOW ALL MARKERS ARE ONLY 1.5" LONG.	6731
5	5/21/09	RVU			+/- .12, +/- .062, +/- .020 WAS +/- .03, +/- .032, +/- .010. HT: .25 +/- .032 WAS .250. MAT'L, HSK TUBING GMUHS31, 3.5 WIDE LINER WAS GMUHS. ADD "A" +/- .062. ADD STYLE B. VIEW FOR BULK BOX.	5593

TITLE	
H***X034H** OPTIMUM COMPUTER PRINTABLE MIL. SPEC. HEAT SHRINK MARKERS CUSTOMER DRAWING	
ITEM REVISION NAME	100923NJ/11
DATASET FILE NAME	100923NJ_DC_C10433/11J
UNLESS OTHERWISE SPECIFIED, DIMENSIONAL TOLERANCES ARE: IN [mm] .x ± .12 [3.05] .xxx ± .020 [0.508] .xx ± .062 [1.57] ANGLES ±	
 THIRD ANGLE PROJECTION	
DRAWN BY	RVU
DATE	8/1/06
CHK	MSAD
SCALE	NTS
MATERIAL:	
HEATSHRINK TUBING GMUHS31, 3.5 WIDE LINER	
DRAWING NUMBER:	
C10433	
DRAWN BY	RVU
DATE	8/1/06
CHK	MSAD
SCALE	NTS
SHT 1 OF 1	
A	