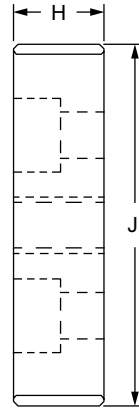
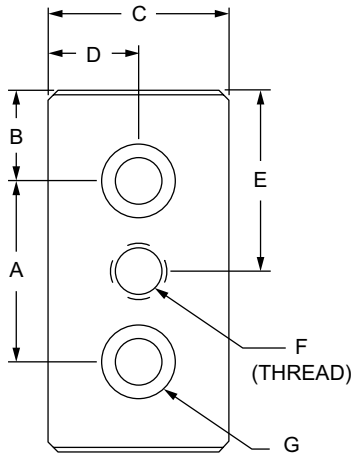


80/20 Casters & Feet

3 Hole - Center Tap Base Plate

- Mounts leveling feet and threaded stem casters
- Requires tap machining service (pg. 10-3) for end mount
- Using M12 SHCS, base plate can only be mounted to profile end



Die-Cast



Aluminum

Part No.	Series	Material	Color	A	B	C	D	E	F	G	H	J	Weight	
2124	10	Aluminum	Clear	1.000"	.500"	1.000"	.500"	1.000"	5/16-18	1/4 SHCS	.500"	2.000"	.084 lb	
2124-Black	10		Black	1.000"	.500"	1.000"	.500"	1.000"	5/16-18	1/4 SHCS	.500"	2.000"	.084 lb	
2128	10		Clear	1.000"	.500"	1.000"	.500"	1.000"	1/4-20	1/4 SHCS	.500"	2.000"	.086 lb	
2128-Black	10		Black	1.000"	.500"	1.000"	.500"	1.000"	1/4-20	1/4 SHCS	.500"	2.000"	.086 lb	
2129	10		Clear	1.000"	.500"	1.000"	.500"	1.000"	3/8-16	1/4 SHCS	.500"	2.000"	.083 lb	
2129-Black	10		Black	1.000"	.500"	1.000"	.500"	1.000"	3/8-16	1/4 SHCS	.500"	2.000"	.083 lb	
2137	10		Clear	1.000"	.500"	1.000"	.500"	1.000"	7/16-14	1/4 SHCS	.500"	2.000"	.082 lb	
2137-Black	10		Black	1.000"	.500"	1.000"	.500"	1.000"	7/16-14	1/4 SHCS	.500"	2.000"	.082 lb	
2361	10		Clear	1.000"	.500"	1.000"	.500"	1.000"	1/2-13	1/4 SHCS	.500"	2.000"	.079 lb	
2361-Black	10		Black	1.000"	.500"	1.000"	.500"	1.000"	1/2-13	1/4 SHCS	.500"	2.000"	.079 lb	
2130	15		Clear	1.500"	.750"	1.500"	.750"	1.500"	3/8-16	5/16 SHCS	.750"	3.000"	.298 lb	
2130-Black	15		Black	1.500"	.750"	1.500"	.750"	1.500"	3/8-16	5/16 SHCS	.750"	3.000"	.298 lb	
2135	15		Clear	1.500"	.750"	1.500"	.750"	1.500"	1/2-13	5/16 SHCS	.750"	3.000"	.294 lb	
2135-Black	15		Black	1.500"	.750"	1.500"	.750"	1.500"	1/2-13	5/16 SHCS	.750"	3.000"	.294 lb	
2138	15		Clear	1.500"	.750"	1.500"	.750"	1.500"	7/16-14	5/16 SHCS	.750"	3.000"	.297 lb	
2138-Black	15		Black	1.500"	.750"	1.500"	.750"	1.500"	7/16-14	5/16 SHCS	.750"	3.000"	.297 lb	
2365	15		Clear	1.500"	.750"	1.500"	.750"	1.500"	3/4-10	5/16 SHCS	.750"	3.000"	.277 lb	
2365-Black	15		Black	1.500"	.750"	1.500"	.750"	1.500"	3/4-10	5/16 SHCS	.750"	3.000"	.277 lb	
25-2128	25		Clear	25.00mm	12.50mm	25.00mm	12.50mm	25.00mm	25.00mm	M6 x 1.0	M6 SHCS	12.00mm	50.00mm	.0358 kg
25-2128-Black	25		Black	25.00mm	12.50mm	25.00mm	12.50mm	25.00mm	25.00mm	M6 x 1.0	M6 SHCS	12.00mm	50.00mm	.0358 kg
25-2129	25	Clear	25.00mm	12.50mm	25.00mm	12.50mm	25.00mm	25.00mm	M8 x 1.25	M6 SHCS	12.00mm	50.00mm	.0347 kg	
25-2129-Black	25	Black	25.00mm	12.50mm	25.00mm	12.50mm	25.00mm	25.00mm	M8 x 1.25	M6 SHCS	12.00mm	50.00mm	.0347 kg	
25-2137	25	Clear	25.00mm	12.50mm	25.00mm	12.50mm	25.00mm	25.00mm	M10 x 1.50	M6 SHCS	12.00mm	50.00mm	.0340 kg	
25-2137-Black	25	Black	25.00mm	12.50mm	25.00mm	12.50mm	25.00mm	25.00mm	M10 x 1.50	M6 SHCS	12.00mm	50.00mm	.0340 kg	
25-2361	25	Clear	25.00mm	12.50mm	25.00mm	12.50mm	25.00mm	25.00mm	M12 x 1.75	M6 SHCS	12.00mm	50.00mm	.0327 kg	
25-2361-Black	25	Black	25.00mm	12.50mm	25.00mm	12.50mm	25.00mm	25.00mm	M12 x 1.75	M6 SHCS	12.00mm	50.00mm	.0327 kg	
40-2130	40	Clear	40.00mm	20.00mm	40.00mm	20.00mm	40.00mm	40.00mm	M10 x 1.50	M8 SHCS	19.00mm	80.00mm	.1485 kg	
40-2130-Black	40	Black	40.00mm	20.00mm	40.00mm	20.00mm	40.00mm	40.00mm	M10 x 1.50	M8 SHCS	19.00mm	80.00mm	.1485 kg	
40-2135	40	Clear	40.00mm	20.00mm	40.00mm	20.00mm	40.00mm	40.00mm	M12 x 1.75	M8 SHCS	19.00mm	80.00mm	.1471 kg	
40-2135-Black	40	Black	40.00mm	20.00mm	40.00mm	20.00mm	40.00mm	40.00mm	M12 x 1.75	M8 SHCS	19.00mm	80.00mm	.1471 kg	
40-2138	40	Clear	40.00mm	20.00mm	40.00mm	20.00mm	40.00mm	40.00mm	M16 x 2.0	M8 SHCS	19.00mm	80.00mm	.1433 kg	
40-2138-Black	40	Black	40.00mm	20.00mm	40.00mm	20.00mm	40.00mm	40.00mm	M16 x 2.0	M8 SHCS	19.00mm	80.00mm	.1433 kg	
40-2365	40	Clear	40.00mm	20.00mm	40.00mm	20.00mm	40.00mm	40.00mm	M20 x 2.5	M8 SHCS	19.00mm	80.00mm	.1380 kg	
40-2365-Black	40	Black	40.00mm	20.00mm	40.00mm	20.00mm	40.00mm	40.00mm	M20 x 2.5	M8 SHCS	19.00mm	80.00mm	.1380 kg	

3 Hole - Center Tap Base Plate (Continued)

Part No.	Series	Material	Color	A	B	C	D	E	F	G	H	J	Weight
14021	30	Zinc	Black	30.00mm	15.00mm	30.00mm	15.00mm	30.00mm	M8 x 1.25	M8 SHCS	12.00mm	60.00mm	.2100 kg
14023	30			30.00mm	15.00mm	30.00mm	15.00mm	30.00mm	M10 x 1.50	M8 SHCS	12.00mm	60.00mm	.2030 kg
14025	30			30.00mm	15.00mm	30.00mm	15.00mm	30.00mm	M12 x 1.75	M8 SHCS	12.00mm	60.00mm	.2000 kg
14027	45			45.00mm	22.50mm	45.00mm	22.50mm	45.00mm	M10 x 1.50	M8 SHCS	16.00mm	90.00mm	.2803 kg
14028	45			45.00mm	22.50mm	45.00mm	22.50mm	45.00mm	M10 x 1.50	M12 SHCS	16.00mm	90.00mm	.2521 kg
14029	45			45.00mm	22.50mm	45.00mm	22.50mm	45.00mm	M12 x 1.75	M8 SHCS	16.00mm	90.00mm	.6160 kg
14030	45			45.00mm	22.50mm	45.00mm	22.50mm	45.00mm	M12 x 1.75	M12 SHCS	16.00mm	90.00mm	.5570 kg
14032	45			45.00mm	22.50mm	45.00mm	22.50mm	45.00mm	M16 x 2.0	M12 SHCS	16.00mm	90.00mm	.5390 kg

Aluminum Material Specifications

Material	Alloy	Process	Finish
Aluminum	6005A – T61	Milled	Anodize

Die-Cast Material Specifications

Material	Grade	Process	Finish
Zinc	GD-ZnAlCu1	Die Cast	Powder Coat

Required Machining Services

Machining Type	Machined	Reference Page
Tap Profile End	Mount to Profile End	10-3

Suggested Hardware (Mount to T-Slot)

Part No.	Series	Qty.	Bolt	Part No.	Qty.	T-Nut
3491	10	2	1/4-20 x 1/2" SHCS	-	-	Economy
3458	15	2	5/16-18 x 7/8" SHCS	-	-	Economy
75-3412	25	2	M6 x 12mm SHCS	-	-	Economy
11-8512	30	2	M8 x 12mm SHCS	13095	2	Roll-in
75-3430	40	2	M8 x 20mm SHCS	-	-	Economy
11-8520	45	2	M8 x 20mm SHCS	13132	2	Drop-in

Suggested Hardware (Mount to Profile End)

Part No.	Series	Qty.	Bolt
3064	10	2	1/4-20 x 3/4" SHCS
3123	15	2	5/16-18 x 1.25" SHCS
13-6516	25	2	M6 x 16mm SHCS (Blue)
11-8520	30	2	M8 x 20mm SHCS
13-8525	40	2	M8 x 25mm SHCS (Blue)
11-2525	45	2	M12 x 25mm LHSCS