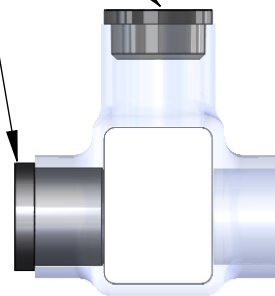


SET SCREW  
PLUG SP3/0

CABLE ENTRY  
PLUG CP3/0

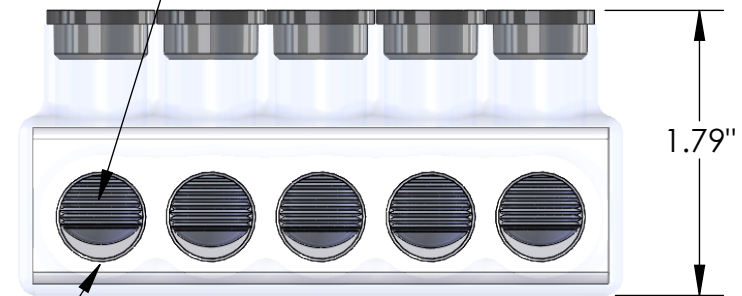
IPLD3/0-5C SHOWN

PART NUMBER	NO. OF PORTS	LENGTH
IPLD3/0-3C	3	2.63
IPLD3/0-4C	4	3.41
IPLD3/0-5C	5	4.19
IPLD3/0-6C	6	4.97
IPLD3/0-8C	8	6.53
IPLD3/0-10C	10	8.09
IPLD3/0-11C	11	8.87
IPLD3/0-12C	12	9.65
IPLD3/0-14C	14	11.21



WIRE ENTRY POINT  
WIRE RANGE: 3/0 - #6AWG  
PRE-FILLED W/ OXIDE INHIBITOR

1/4 INTERNAL HEX PRESSURE SCREW



CONTACT NSI FOR SALES @ 800.321.5847



**POLARIS**  
SALES . CO . INC

PROPRIETARY AND CONFIDENTIAL

11625 PROSPEROUS DRIVE ODESSA, FL 33556

THE INFORMATION CONTAINED IN THIS DRAWING IS THE SOLE PROPERTY OF POLARIS SALES CO. INC. ANY REPRODUCTION IN PART OR AS A WHOLE WITHOUT THE WRITTEN PERMISSION OF POLARIS SALES CO. INC. IS PROHIBITED.

TITLE:

CLEAR INSULATED DUAL ENTRY 3/0 CONNECTOR

NAME DATE  
DRAWN BY T.MITCHELL 12/2021

DWG. NO.

IPLD3/0C SERIES

MATERIAL: N/A

SCALE: N/A

SHEET: 1 OF 1

NOTES:

- CONNECTOR MANUFACTURED FROM 6061-T6 ALUMINUM ALLOY.
- UL LISTED PER UL486A/B SPECIFICATIONS FOR 600V.
- DUAL RATED FOR 90°C COPPER AND/OR ALUMINUM CONDUCTOR.
- COLD TEMPERATURE RATED TO -45°C.
- HIGH DIELECTRIC STRENGTH INSULATION IS ABRASION AND CHEMICAL RESISTANT.