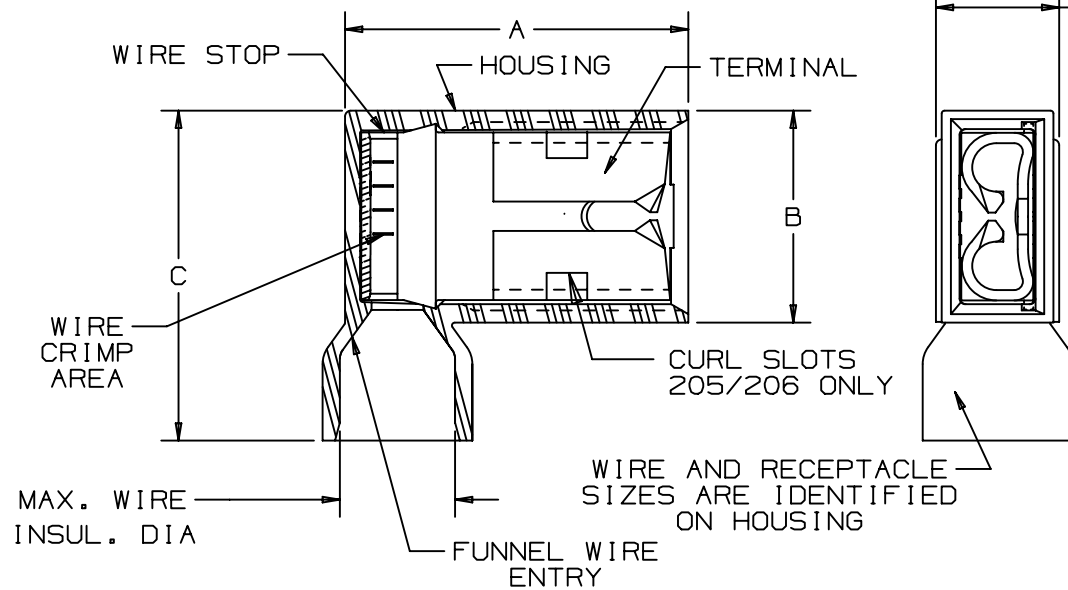


THIS COPY IS PROVIDED ON A RESTRICTED BASIS AND IS NOT TO BE USED IN ANY WAY DETRIMENTAL TO THE INTERESTS OF PANDUIT CORP.



NOTES:

- UL LISTED AND CSA CERTIFIED FOR:
  - 600V MAX VOLTAGE RATING
  - 221°F (105°C) MAX TEMP RATING
  - STRANDED COPPER WIRE ONLY
  - 6-12 LBS INSERTION/WITHDRAWAL FORCE
- MATERIAL:
  - STAMPING-CDA 260 BRASS, TIN PLATED
  - HOUSING-TYPE 66 NYLON
- DIMENSIONS IN BRACKETS ARE IN mm OR mm<sup>2</sup>
- COLORS ARE TRANSLUCENT
- INSTALLATION TOOLS: CT-300-1
- PACKAGE QTY:
  - STD: C=100
  - BULK: M=1000
- WIRE STRIP LENGTH 11/32 <sup>+1/32</sup> (8.7 <sup>+0.8</sup>) <sub>-0</sub> <sub>-0</sub>

PART NUMBER △	TAB SIZE	WIRE RANGE AWG	COLOR	MAX. INSUL.	DIMENSIONS in.		
					A ±.02	B ±.01	C ±.02
DNFR18-250F1B-	.250 X .032	22-18 (0.5-1.0)	RED	.178 (4.52)	.60 (15.24)	.37 (9.40)	.58 (14.73)
DNFR18-205F1B-	.205/.187 X .032	22-18 (0.5-1.0)	RED	.178 (4.52)	.60 (15.24)	.37 (9.40)	.58 (14.73)
DNFR18-206F1B-	.205/.187 X .020	22-18 (0.5-1.0)	RED	.178 (4.52)	.60 (15.24)	.37 (9.40)	.58 (14.73)
DNFR14-250F1B-	.250 X .032	16-14 (1.5-2.5)	BLUE	.178 (4.52)	.60 (15.24)	.37 (9.40)	.58 (14.73)
DNFR14-205F1B-	.205/.187 X .032	16-14 (1.5-2.5)	BLUE	.178 (4.52)	.60 (15.24)	.37 (9.40)	.58 (14.73)
DNFR14-206F1B-	.205/.187 X .020	16-14 (1.5-2.5)	BLUE	.178 (4.52)	.60 (15.24)	.37 (9.40)	.58 (14.73)



LISTED  
20H3  
E78522



CERTIFIED  
LR31212

REV	DATE	BY	CHK	APR	DESCRIPTION	ECN
05	2/21/18	BWG	SKB	JADE	△ ADDED DASH TO END OF PART NUMBERS. ADDED "LOOSE PIECE" TO TITLE. △ REVISED DIMENSION LOCATION OF HOUSING WIDTH AND UPDATED TITLE BORDER AND LOGOS.	019464/00

TITLE <b>RIGHT ANGLE FULLY INSULATED FEMALE DISCONNECTS .250 X .032, .205/.187 X .032/.020 - LOOSE PIECE</b>		CUSTOMER DRAWING	
ITEM REVISION NAME N41197BA/08			
DATASET FILE NAME N41197BA_DC/08 - A41197_REV05		MATERIAL: SEE DRAWING	
UNLESS OTHERWISE SPECIFIED, DIMENSIONAL TOLERANCES ARE: IN [ mm ] .X ± --- .XXX ± --- .XX ± --- ANGLES ± ---		DRAWING NUMBER: A41197	
DRAWN BY DSM	DATE	CHK RLS	SCALE NONE
SHT 1 OF 1		SIZE A	

D10100DA/20