

## RJ45 RJ45 10G Cat6, 8p IP20 coupler

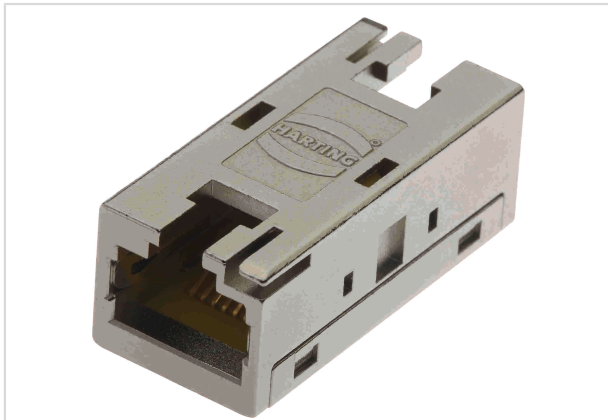


Image is for illustration purposes only. Please refer to product description.

Part number	09 45 545 1560
Specification	RJ45 RJ45 10G Cat6, 8p IP20 coupler
HARTING eCatalogue	<a href="https://b2b.harting.com/09455451560">https://b2b.harting.com/09455451560</a>

### Identification

Category	Connectors
Series	HARTING RJ Industrial®
Element	Coupler
Specification	RJ45

### Version

Shielding	Fully shielded, 360° shielding contact
Number of contacts	8

### Technical characteristics

Transmission characteristics	Cat. 6 Class E up to 250 MHz
Data rate	100 Mbit/s
	1 Gbit/s
	2.5 Gbit/s
	5 Gbit/s
	10 Gbit/s
Limiting temperature	-40 ... +85 °C
Mating cycles	≥750
Degree of protection acc. to IEC 60529	IP20

### Material properties

Material (hood/housing)	Zinc die-cast
Surface (hood/housing)	Nickel plated
Material flammability class acc. to UL 94	V-0



Pushing Performance

## Material properties

RoHS	compliant
ELV status	compliant
China RoHS	e
REACH Annex XVII substances	No
REACH ANNEX XIV substances	No
REACH SVHC substances	No

## Specifications and approvals

Approvals	DNV GL
UL / CSA	UL 1977 ECBT2.E102079 CSA-C22.2 No. 182.3 ECBT8.E102079
PROFINET	Yes

## Commercial data

Packaging size	1
Net weight	19.7 g
Country of origin	Latvia
European customs tariff number	85366990
eCl@ss	27440190 Industry connector (unspecified)