

## Han 16 HPR Base Panel Toggle locking

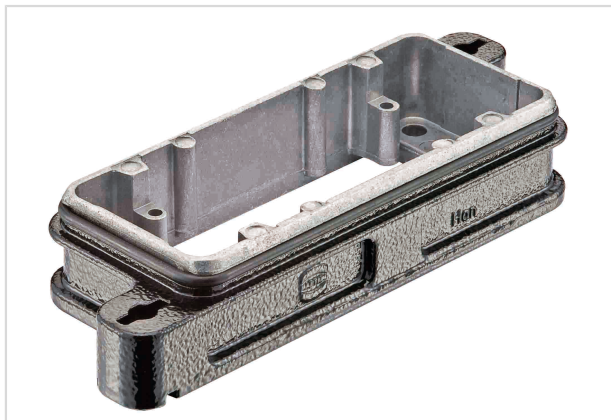


Image is for illustration purposes only. Please refer to product description.

Part number	09 40 016 0301
Specification	Han 16 HPR Base Panel Toggle locking
HARTING eCatalogue	<a href="https://b2b.harting.com/09400160301">https://b2b.harting.com/09400160301</a>

### Identification

Category	Hoods/Housings
Series of hoods/housings	Han® HPR
Type of hood/housing	Bulkhead mounted housing

### Version

Locking type	Toggle locking
Size	16 B
Field of application	Hoods/housings for harsh outdoor environments

### Technical characteristics

Limiting temperature	-40 ... +125 °C
Degree of protection acc. to IEC 60529	IP65 IP68
Type rating acc. to UL 50 / UL 50E	4 4X 12

### Material properties

Material (hood/housing)	Aluminium die-cast Corrosion resistant
Surface (hood/housing)	Powder-coated
Colour (hood/housing)	RAL 9005 (jet black)
Material (seal)	NBR
RoHS	compliant



Pushing Performance

## Material properties

ELV status	compliant
China RoHS	e
REACH Annex XVII substances	No
REACH ANNEX XIV substances	No
REACH SVHC substances	No

## Specifications and approvals

Approvals	DNV GL
UL / CSA	UL 1977 ECBT2.E235076 CSA-C22.2 No. 182.3 ECBT8.E235076
CE	Yes

## Commercial data

Packaging size	1
Net weight	170.64 g
Country of origin	Germany
European customs tariff number	85389099
eCl@ss	27440202 Shell for industrial connectors