

Han 12Q-SMC-MI-CRT-PE with QL

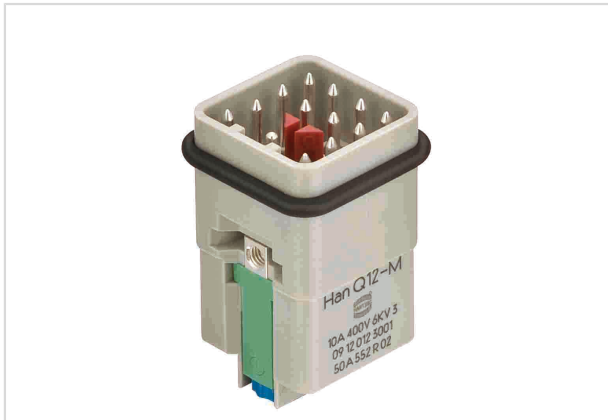


Image is for illustration purposes only. Please refer to product description.

Part number	09 12 012 3001
Specification	Han 12Q-SMC-MI-CRT-PE with QL
HARTING eCatalogue	https://b2b.harting.com/09120123001

Identification

Category	Inserts
Series	Han [®] Q
Identification	12/0
Specification	With Han-Quick Lock [®] PE contact

Version

Termination method	Crimp termination
Gender	Male
Size	3 A
Number of contacts	12
PE contact	Yes
Details	Blue slide Please order crimp contacts separately.

Technical characteristics

Conductor cross-section	0.14 ... 2.5 mm ²
Rated current	10 A
Rated voltage	400 V
Rated impulse voltage	6 kV
Pollution degree	3
Insulation resistance	>10 ¹⁰ Ω
Limiting temperature	-40 ... +125 °C



Pushing Performance

Technical characteristics

Mating cycles ≥ 500

Material properties

Material (insert)	Polycarbonate (PC)
Colour (insert)	RAL 7032 (pebble grey)
Material flammability class acc. to UL 94	V-0
RoHS	compliant with exemption
RoHS exemptions	6(c): Copper alloy containing up to 4 % lead by weight
ELV status	compliant with exemption
China RoHS	50
REACH Annex XVII substances	No
REACH ANNEX XIV substances	No
REACH SVHC substances	Yes
REACH SVHC substances	Lead
ECHA SCIP number	5dbb3851-b94e-4e88-97a1-571845975242

Specifications and approvals

Specifications	EN 60664-1 IEC 61984
Approvals	DNV GL
UL / CSA	UL 1977 ECBT2.E235076 CSA-C22.2 No. 182.3 ECBT8.E235076

Commercial data

Packaging size	10
Net weight	11 g
Country of origin	Germany
European customs tariff number	85366990
eCl@ss	27440205 Contact insert for industrial connectors