

24

2410 09

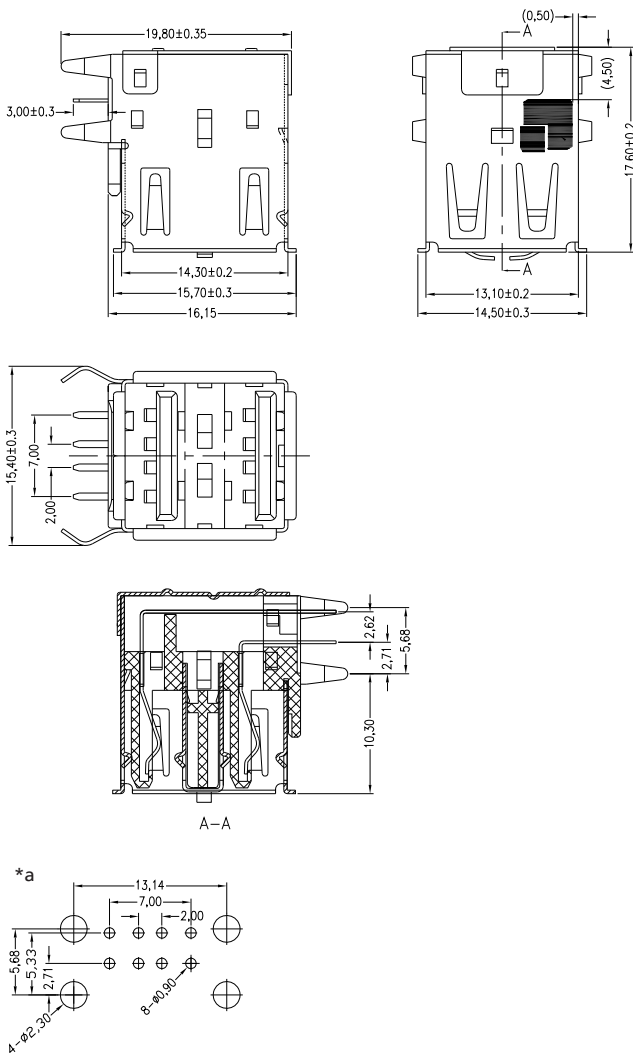
USB and IEEE 1394 connectors



Double USB 2.0 chassis socket type A, angular version, for printed circuit boards, with ground contacts at the front

24

2410 09



Environmental conditions

Temperature range -45 °C/+85 °C

Materials

Insulating body thermoplast GF, V-0 according to UL94
 Contact spring Cu alloy, pre-nickel and gold-plated, tin-plated in solder area
 Ground contact spring Cu alloy, nickel-plated
 Housing Cu alloy, nickel-plated

Mechanical data

Insertion force ≤ 34,3 N
 Withdrawal force ≥ 9,8 N

Electrical data (at T_{amb} 20 °C)

Contact resistance ≤ 30 mΩ
 Rated current 1 A
 Rated voltage 30 V AC
 Rated impulse voltage 500 V AC/60 s
 Insulation resistance ≥ 1 GΩ

Associated products

Counterparts
 ↗ 2410 07 ↗ 2410 08 ↗ 2480
 ↗ 2482

*a printed circuit board layout

24

2410 09

Designation	Pole Number	PU (Pieces)	MDQ (Pieces)
2410 09	2 x 4	100	600

Packaging:
in a tray