

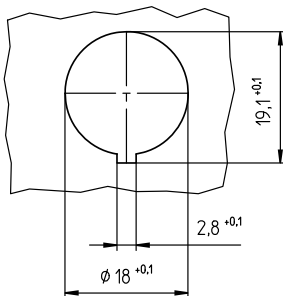
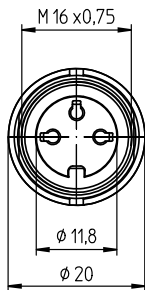
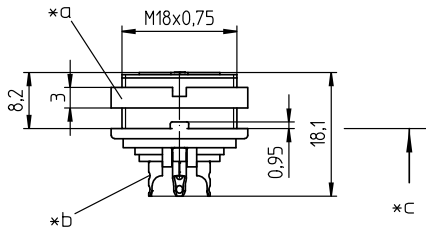
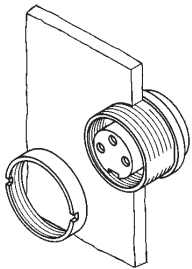
03 KGV

Circular connectors with threaded joint M16 acc. to IEC 61076-2-106, IP40/IP68



Chassis socket acc. to IEC 61076-2-106, IP40, with threaded joint and solder terminals, for back side mounting

03 KGV



Environmental conditions

Temperature range -40 °C/+85 °C

Materials

Insulating body PA GF, V-0 according to UL94
 Contact bush CuZn, silver-plated and flash gold-plated (3-8 poles)
 CuZn, pre-nickel and gold-plated (12 poles)
 Housing Zn diecast, pre-copper and nickel-plated
 Ring screw CuZn, nickel-plated

Mechanical data

Insertion force/contact ≤ 5.0 N¹
 Withdrawal force/contact ≥ 1.2 N (3-8 poles)
 ≥ 0.9 N (12 poles)¹
 Tightening torque connector 1-3 Nm
 Tightening torque nut 1-3 Nm
 Protection class IP40²

¹ measured with a polished steel pin, nominal thickness 1.5 mm (1.0 mm with 12 poles)

² according to IEC DIN EN 60529, only in locked condition with an appropriate counterpart

Connectable conductors for solder area

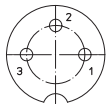
Section ≤ 0.75 mm² (AWG 20) (3-8 poles)
 ≤ 0.25 mm² (AWG 24) (12 poles)

Electrical data (at T_{amb} 20 °C)

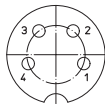
Contact resistance ≤ 5 mΩ
 Rated current 5 A (T_{amb} 40 °C, 3-8 poles)
 3 A (T_{amb} 40 °C, 12 poles)
 Rated voltage with pollution degree 1:
 300 V (versions 30, 40, 50/6, 60, 70)
 100 V (versions 50, 71, 80, 81)
 160 V (Polbild 120)
 with pollution degree 2:
 250 V (versions 30, 40)
 32 V (versions 50, 71, 80, 81)
 160 V (versions 50/6, 60, 70, 120)
 Rated impulse voltage 1500 V (versions 30, 40, 50/6, 60, 70, 120)
 500 V (versions 50, 71, 80, 81)
 Material group II (IEC)/I (UL) (400 ≤ CTI < 600)
 Overvoltage category I
 Insulation resistance > 100 MΩ

03 KGV

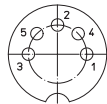
Pin configurations, solder side view



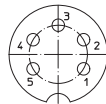
03-a
KGV 30



04-a
KGV 40



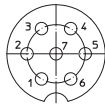
05-b
KGV 50



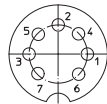
05-a
KGV 50/6



06-a
KGV 60



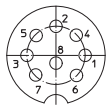
07-a
KGV 70



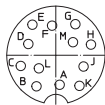
07-b
KGV 71



KGV 80



08-a
KGV 81



12-a
KGV 120

- *a nut enclosed separately
- *b cup-shaped solder terminal
- *c mounting direction
- *d port in mounting plate

Associated products

Counterparts

- | | | |
|------------------------------|----------------------------|-----------------------------|
| ☞ SV | ☞ SV ... C | ☞ SV ...-8 |
| ☞ SV ...-8 C | ☞ WSV | ☞ WSV ... C |

Accessories

- | | | |
|------------------------|--------------------------|------------------------|
| ☞ 0381 | ☞ 038199 | ☞ 0384 |
| ☞ 0385 | ☞ 038799 | |

03 KGV

Designation	Pole Number	PU (Pieces)	MDQ (Pieces)
KGV 30	3	50	100
KGV 40	4	50	100
KGV 50	5	50	100
KGV 50/6	5	50	100
KGV 60	6	50	100
KGV 70	7	50	100
KGV 71	7	50	100
KGV 80	8	50	100
KGV 81	8	50	100
KGV 120	12	50	100

Packaging:
in a cardboard box