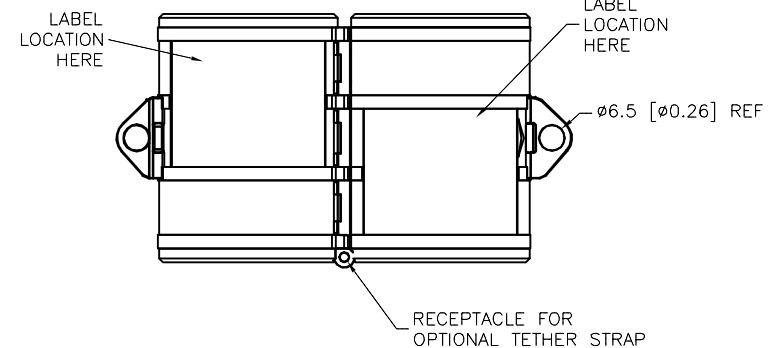


SPECIFICATIONS

HOUSING MATERIAL/COLOR

NYLON 66/ BLACK

OPENED VIEW OF
POWER LOCK DEVICE

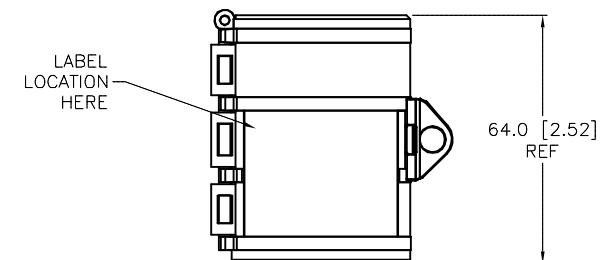
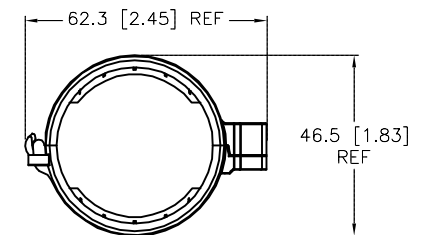
TO INSTALL POWER LOCK DEVICE,
PLACE THE "M" SIDE TOWARDS MALE
CONNECTOR, AROUND CORDSET END
AND CLOSE UNTIL CONNECTOR SNAPS
CLOSED.

"M" DESIGNATES
MALE END

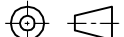
TO REMOVE POWER LOCK DEVICE, INSERT SMALL
SCREWDRIVER INTO LOCKING GROOVE AS SHOWN IN
PICTURE. ROTATE SCREWDRIVER IN DIRECTION
SHOWN UNTIL LOCKING DEVICE RELEASES.

"F" DESIGNATES
FEMALE END

LABEL
LOCATION
HERE



SOURCE DRAWING - FOR REFERENCE ONLY

RELATED DOCUMENTS		3RD ANGLE PROJECTION		<div>THIS DRAWING IS CONFIDENTIAL AND THE PROPERTY OF TURCK INC. USE OF THIS DOCUMENT WITHOUT WRITTEN PERMISSION IS PROHIBITED.</div> <div>TURCK INC <i>High Technology Sensors and Automation Controls</i></div>		<div>3000 CAMPUS DRIVE MINNEAPOLIS, MN 55441 1-800-544-7769 (763) 553-7300 (763) 553-0708 fax turck.com</div>	
1. 2. 3. 4.							
MATERIAL		DRFT KMY		DATE 04/05/12		DESCRIPTION LOCK-MINI-D	
SEE SPECIFICATIONS		APVD J.B.		SCALE 1=2.0			
FINISH		UNIT OF MEASUREMENT MILLIMETER [INCH]		IDENTIFICATION NO. A9744		REV	
SEE SPECIFICATIONS						B	
		DO NOT SCALE THIS DRAWING		FILE: A9744		SHEET 1 OF 1	

B	UPDATE LOCKFAST PARTS USED IN ASSEMBLY	RDS	02/03/15	48708
REV	DESCRIPTION	BY	DATE	ECO NO.