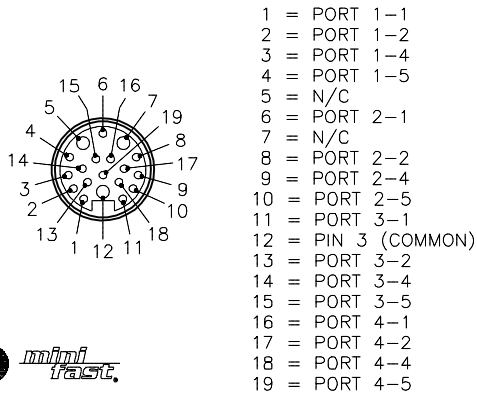
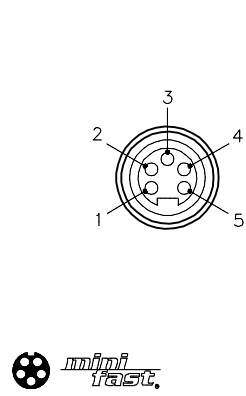


MALE END VIEW (P1)

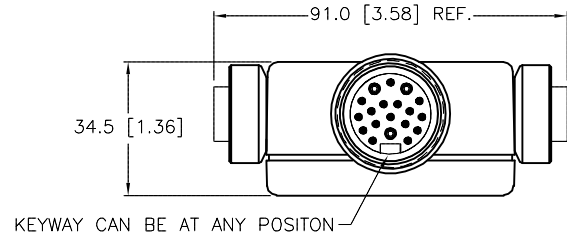
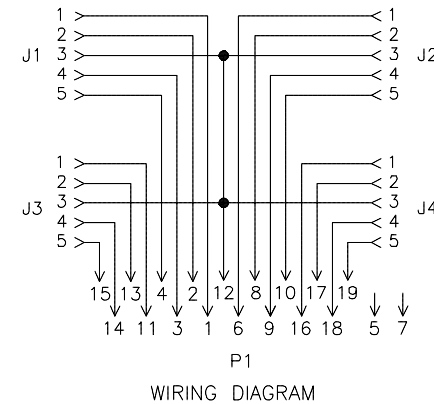
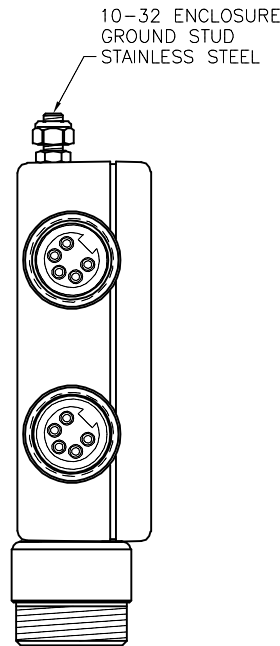
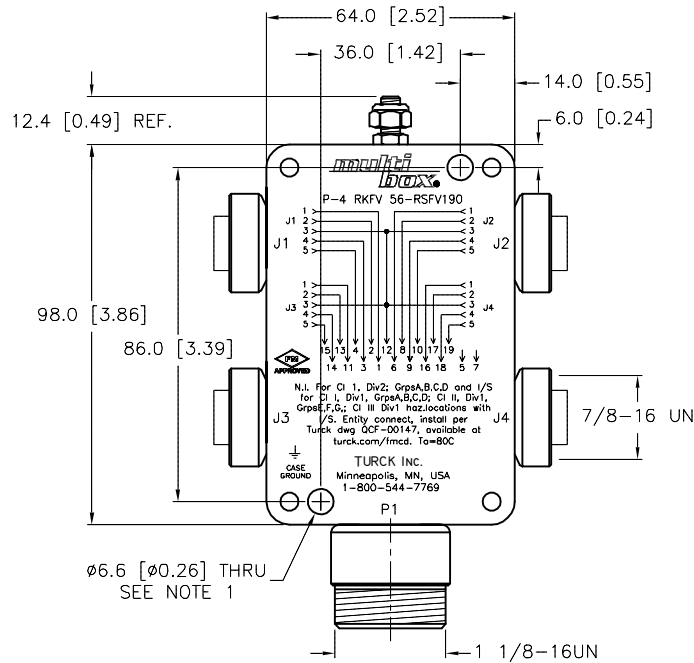


FEMALE END VIEW (J1-J4)



SPECIFICATIONS

| | |
|-------------------------------|---|
| HOUSING MATERIAL | DIE-CAST ALUMINUM ALLOY |
| HOUSING FINISH/COLOR | POWDER COAT/BLACK |
| RECEPTACLE HOUSINGS | STAINLESS STEEL/PASSIVATED |
| CONTACT CARRIERS | TPU |
| CONTACT MATERIAL/PLATING | BRASS/GOLD |
| OPERATING VOLTAGE | 300 V |
| OPERATING CURRENT | 2.0 A |
| PROTECTION CLASS to DIN 40050 | IP 67 - ONLY WHEN ALL RECEPTACLES ARE COVERED WITH PLUGS OR CONNECTED |
| OPERATING TEMPERATURE | -40°C to +80°C (-40°F to +176°F) |



NOTES:
1. CLEARANCE HOLE FOR 1/4-20 MOUNTING SCREWS (2 NOT INCLUDED).

SOURCE DRAWING - FOR REFERENCE ONLY

| | | | | | |
|---|---|--|---------------|--|---------------------------|
| RELATED DOCUMENTS 1. 2. 3. 4. | 3RD ANGLE PROJECTION | THIS DRAWING IS CONFIDENTIAL AND THE PROPERTY OF TURCK INC. USE OF THIS DOCUMENT WITHOUT WRITTEN PERMISSION IS PROHIBITED. | | 3000 CAMPUS DRIVE MINNEAPOLIS, MN 55441 1-800-544-7769 (763) 553-7300 (763) 553-0708 fax www.turck.us | |
| | | DRFT KMY | DATE 06/12/14 | DESCRIPTION P-4 RKFV 56-RSFV190 | |
| MATERIAL SEE SPECIFICATIONS | ALL DIMENSIONS DISPLAYED ON THIS DRAWING ARE FOR REFERENCE ONLY | APVD C.K. | SCALE 1=2.0 | IDENTIFICATION NO. U2-23288 | |
| FINISH SEE SPECIFICATIONS | | UNIT OF MEASUREMENT MILLIMETER [INCH] | | REV B | DO NOT SCALE THIS DRAWING |
| CONTACT TURCK FOR MORE INFORMATION | | FILE: U2-23288 | | SHEET 1 OF 1 | |

