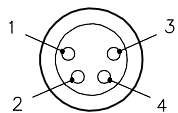
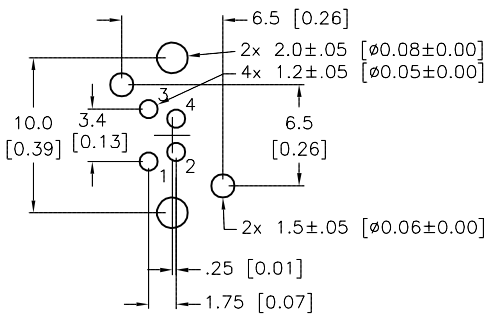


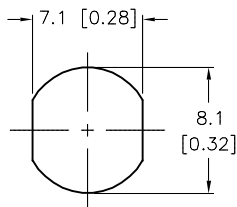
FEMALE END VIEW



PCB LAYOUT

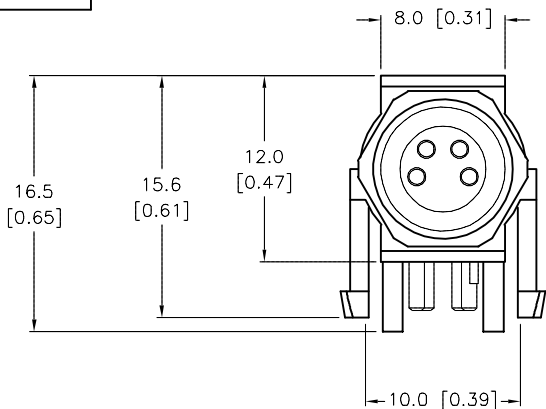
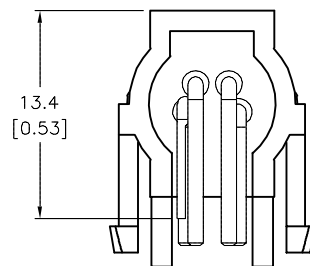
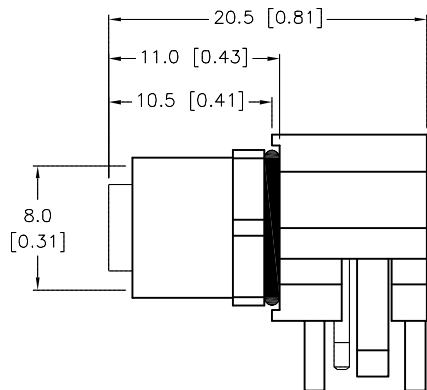
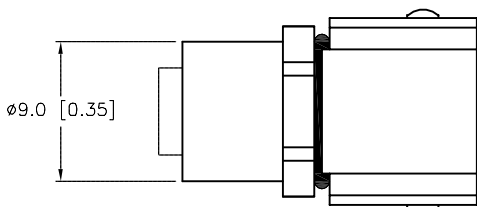
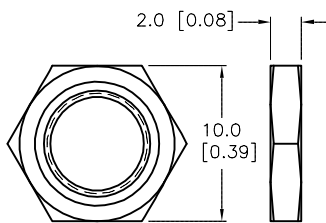


TYP. PANEL CUTOUT



SPECIFICATIONS	
CONTACT CARRIER MATERIAL/COLOR	NYLON/BLACK
CONTACT MATERIAL/PLATING	BRASS/GOLD
HOUSING AND NUT MATERIAL/PLATING	BRASS/NICKEL
RATED CURRENT [A]	4.0 A
RATED VOLTAGE [V]	30 V
TEMPERATURE RANGE	-25°C to +85°C (-13°F to +185°F)
PROTECTION CLASS	MEETS IEC IP67

M8x1 LOCKNUT



SOURCE DRAWING - FOR REFERENCE ONLY

NOTES:

1. RECOMMENDED THICKNESS OF PCB 1.5mm.

RELATED DOCUMENTS 1. 2. 3. 4.	3RD ANGLE PROJECTION	THIS DRAWING IS CONFIDENTIAL AND THE PROPERTY OF TURCK INC. USE OF THIS DOCUMENT WITHOUT WRITTEN PERMISSION IS PROHIBITED.		3000 CAMPUS DRIVE MINNEAPOLIS, MN 55441 1-800-544-7769 (763) 553-7300 (763) 553-0708 fax www.turck.us	
	MATERIAL  SEE SPECIFICATIONS	DRFT	RWC	DATE	11/03/08
		APVD		SCALE	1=.5
	FINISH  SEE SPECIFICATIONS	ALL DIMENSIONS DISPLAYED ON THIS DRAWING ARE FOR REFERENCE ONLY	UNIT OF MEASUREMENT <b>MILLIMETER [ INCH ]</b>		DESCRIPTION WMFKSH 4F-PCB
	CONTACT TURCK FOR MORE INFORMATION	DO NOT SCALE THIS DRAWING		IDENTIFICATION NO. U2-07211	FILE: U2-07211

C	ADD LOCKNUT & PANEL CUT DETAIL	NF	03/16/18	64693
REV	DESCRIPTION	BY	DATE	ECO NO.