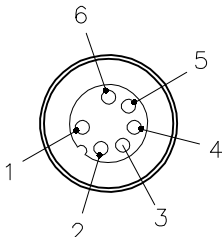

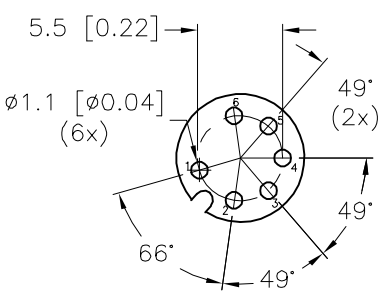
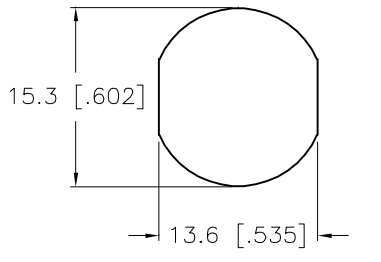
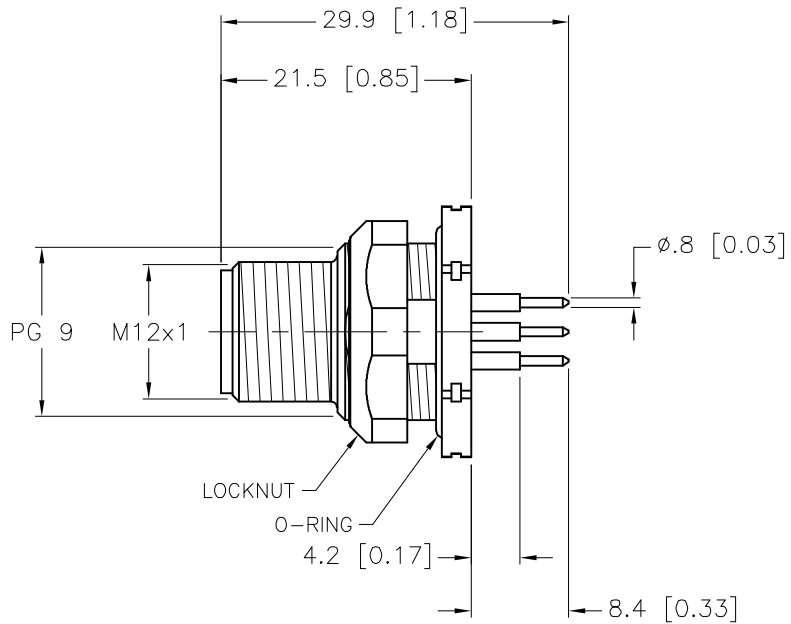
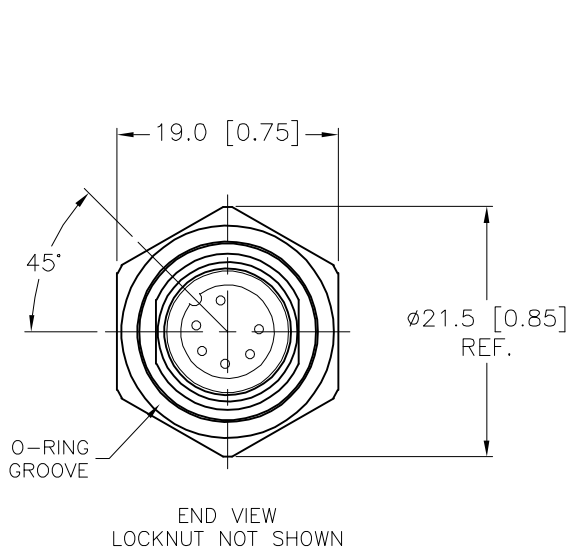
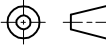


MALE END VIEW	BOARD LAYOUT	TYPICAL PANEL CUTOUT	SPECIFICATIONS																			
 			<table border="1"> <tr><td>CONTACT CARRIER MATERIAL</td><td>NYLON OR TPU</td></tr> <tr><td>CONTACT MATERIAL/PLATING</td><td>BRASS/GOLD</td></tr> <tr><td>HOUSING, LOCKNUT MATERIAL/PLATING</td><td>BRASS/NICKEL</td></tr> <tr><td>RATED CURRENT [A]</td><td>2.0 A</td></tr> <tr><td>RATED VOLTAGE [V]</td><td>60 VAC/75 VDC</td></tr> <tr><td>NUMBER OF CONDUCTORS [AWG]</td><td>6 PRINTED CIRCUIT PINS</td></tr> <tr><td>TEMPERATURE RATING</td><td>-40°C to +80°C (-40°F to +176°F)</td></tr> <tr><td>PROTECTION CLASS</td><td>MEETS NEMA 1,3,4,6P AND IEC IP68</td></tr> <tr><td>MAX. PANEL THICKNESS</td><td>3.0 [0.12]</td></tr> </table>	CONTACT CARRIER MATERIAL	NYLON OR TPU	CONTACT MATERIAL/PLATING	BRASS/GOLD	HOUSING, LOCKNUT MATERIAL/PLATING	BRASS/NICKEL	RATED CURRENT [A]	2.0 A	RATED VOLTAGE [V]	60 VAC/75 VDC	NUMBER OF CONDUCTORS [AWG]	6 PRINTED CIRCUIT PINS	TEMPERATURE RATING	-40°C to +80°C (-40°F to +176°F)	PROTECTION CLASS	MEETS NEMA 1,3,4,6P AND IEC IP68	MAX. PANEL THICKNESS	3.0 [0.12]	
CONTACT CARRIER MATERIAL	NYLON OR TPU																					
CONTACT MATERIAL/PLATING	BRASS/GOLD																					
HOUSING, LOCKNUT MATERIAL/PLATING	BRASS/NICKEL																					
RATED CURRENT [A]	2.0 A																					
RATED VOLTAGE [V]	60 VAC/75 VDC																					
NUMBER OF CONDUCTORS [AWG]	6 PRINTED CIRCUIT PINS																					
TEMPERATURE RATING	-40°C to +80°C (-40°F to +176°F)																					
PROTECTION CLASS	MEETS NEMA 1,3,4,6P AND IEC IP68																					
MAX. PANEL THICKNESS	3.0 [0.12]																					



SOURCE DRAWING - FOR REFERENCE ONLY

RELATED DOCUMENTS 1. 2. 3. 4.	3RD ANGLE PROJECTION 	THIS DRAWING IS CONFIDENTIAL AND THE PROPERTY OF TURCK INC. USE OF THIS DOCUMENT WITHOUT WRITTEN PERMISSION IS PROHIBITED.	3000 CAMPUS DRIVE MINNEAPOLIS, MN 55441 1-800-544-7769 (763) 553-7300 (763) 553-0708 fax www.turck.us
MATERIAL SEE SPECIFICATIONS	ALL DIMENSIONS DISPLAYED ON THIS DRAWING ARE FOR REFERENCE ONLY	DRFT RDS DATE 07/21/08 APVD SCALE 1=.7	DESCRIPTION FSFDK 6-PCB
FINISH SEE SPECIFICATIONS	CONTACT TURCK FOR MORE INFORMATION	UNIT OF MEASUREMENT MILLIMETER [INCH] DO NOT SCALE THIS DRAWING	IDENTIFICATION NO. U2-14343 REV B FILE: U2-14343 SHEET 1 OF 1

B	DRAWING PROCESSED AS PART OF ECO 33971	CBM	04/07/11	33971
REV	DESCRIPTION	BY	DATE	ECO NO.