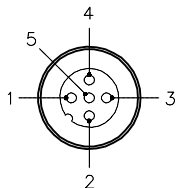
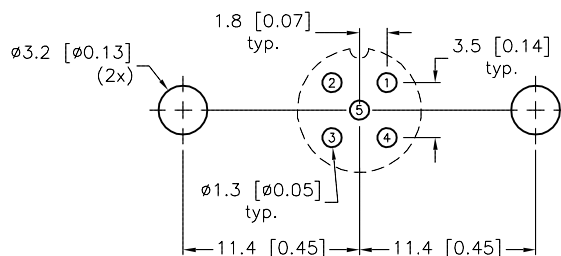
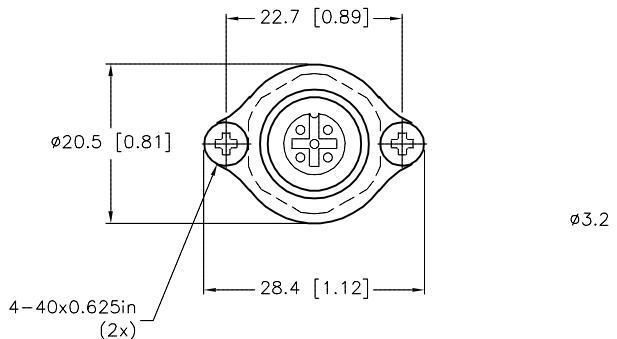


MALE END VIEW

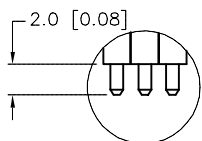
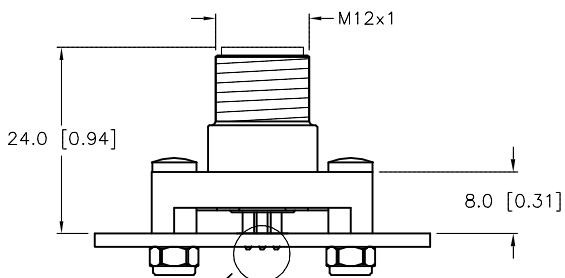


SPECIFICATIONS

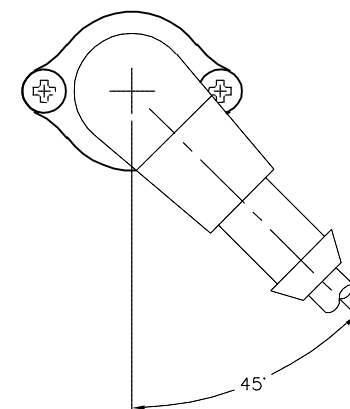
CONTACT CARRIER MATERIAL	NYLON OR TPU
CONTACT MATERIAL/PLATING	BRASS/GOLD
RATED CURRENT [A]	4.0 A
RATED VOLTAGE [V]	250 V
HOUSING MATERIAL	BRASS/NICKEL
NUMBER OF CONDUCTORS [AWG]	PCB PINS
TEMPERATURE RATING	-30°C to +80°C (-22°F to +176°F)
PROTECTION CLASS	MEETS NEMA 1,3,4,6P AND IEC IP68
MAX BOARD THICKNESS	2mm



BOARD LAYOUT  
SCALE 2=1



DIMENSIONAL VIEW



RIGHT ANGLE  
CONNECTOR ORIENTATION

SOURCE DRAWING - FOR REFERENCE ONLY

NOTES:

1. FOR OTHER RIGHT ANGLE CONNECTORS, ROTATE BOARD LAYOUT TO DESIRED ORIENTATION OR ROTATE 5-HOLE PINOUT IN INCREMENTS OF 60°.

RELATED DOCUMENTS 1. INSERT SHEET 10240168 2. 3. 4.		3RD ANGLE PROJECTION 		THIS DRAWING IS CONFIDENTIAL AND THE PROPERTY OF TURCK INC. USE OF THIS DOCUMENT WITHOUT WRITTEN PERMISSION IS PROHIBITED.		<p>3000 CAMPUS DRIVE MINNEAPOLIS, MN 55441 1-800-544-7769 (763) 553-7300 (763) 553-0708 fax www.turck.us</p>	
MATERIAL  SEE SPECIFICATIONS		DRFT IK APVD		DATE 11/02/99 SCALE 1=1.0		DESCRIPTION  FS 4.5-PCB	
FINISH  SEE SPECIFICATIONS		UNIT OF MEASUREMENT <b>MILLIMETER [ INCH ]</b>		IDENTIFICATION NO.  U1110-5		REV  F	
F ADD SPECS & UPDATE SCREW LENGTH		NF 08/01/19		500000000281		DO NOT SCALE THIS DRAWING	
REV DESCRIPTION		BY		DATE		ECO NO.	
FILE: U1110-5		SHEET 1 OF 1					