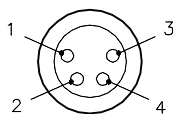
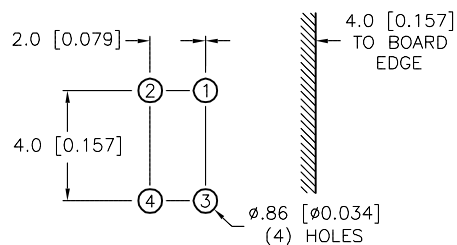


FEMALE END VIEW

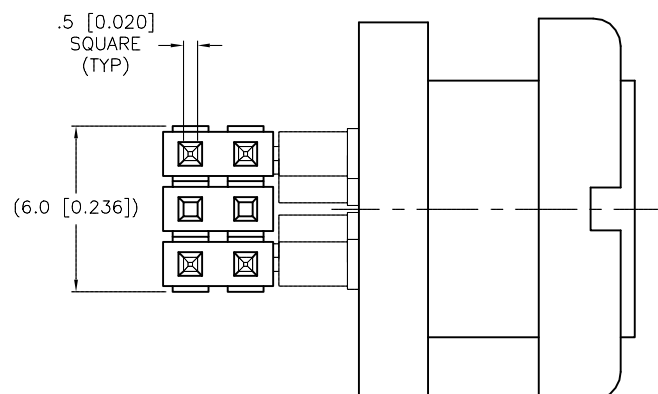
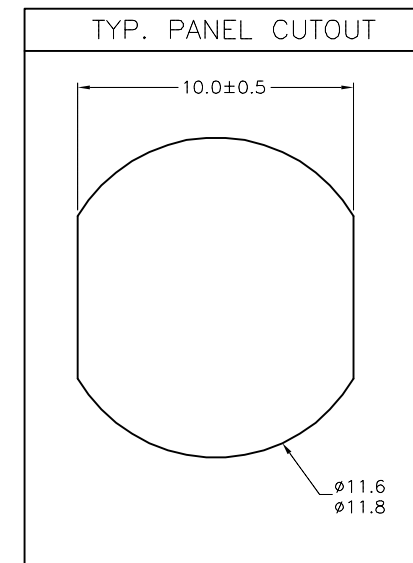
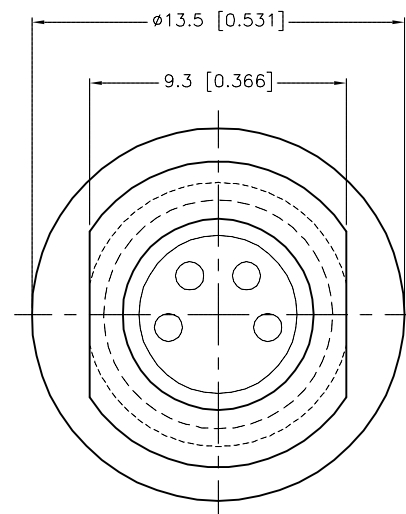
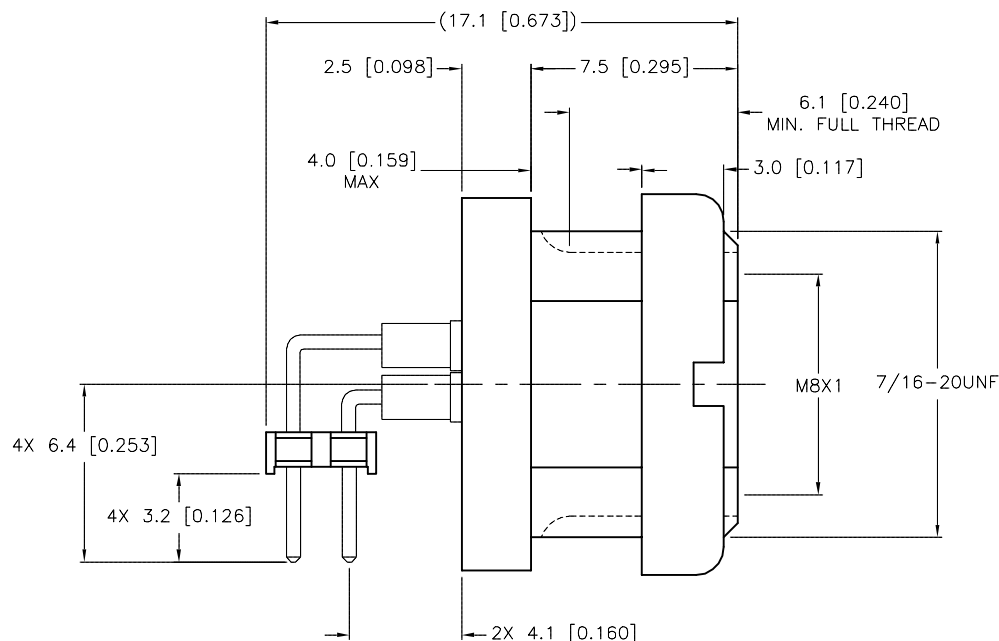


PIN-OUT DIAGRAM

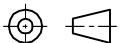



SPECIFICATIONS

CONTACT CARRIER MATERIAL/COLOR	NYLON/BLACK
CONTACT MATERIAL/PLATING	BRASS/GOLD
HOUSING MATERIAL/PLATING	BRASS/NICKEL
NUMBER OF CONTACTS	4 x 0.025 IN SQ. POSTS
RATED CURRENT [A]	2.0 A
RATED VOLTAGE [V]	30 VAC/36 VDC
TEMPERATURE RANGE	-30°C to +105°C (-22°F to +221°F)
PROTECTION CLASS	MEETS NEMA 1,3,4,6P AND IEC IP67



SOURCE DRAWING - FOR REFERENCE ONLY

RELATED DOCUMENTS 1. 2. 3. 4.	3RD ANGLE PROJECTION			THIS DRAWING IS CONFIDENTIAL AND THE PROPERTY OF TURCK INC. USE OF THIS DOCUMENT WITHOUT WRITTEN PERMISSION IS PROHIBITED.		3000 CAMPUS DRIVE MINNEAPOLIS, MN 55441 1-800-544-7769 (763) 553-7300 (763) 553-0708 fax www.turck.us		
MATERIAL	ALL DIMENSIONS DISPLAYED ON THIS DRAWING ARE FOR REFERENCE ONLY	DRFT	RDS	DATE	12/17/02	DESCRIPTION WMFK 4F-PCB		
APVD		GC	SCALE	4=1				
FINISH		CONTACT TURCK FOR MORE INFORMATION	UNIT OF MEASUREMENT MILLIMETER [INCH] DO NOT SCALE THIS DRAWING			IDENTIFICATION NO. U0902-41		REV E
		FILE: PIC\U0902-41			SHEET 1 OF 1			

E	ADD PANEL CUTOUT	RDS	02/24/20	75679
REV	DESCRIPTION	BY	DATE	ECO NO.