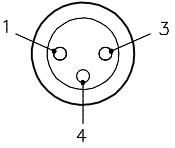
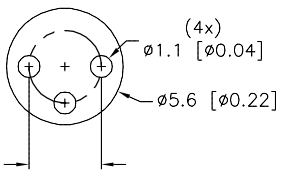
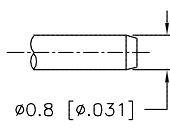
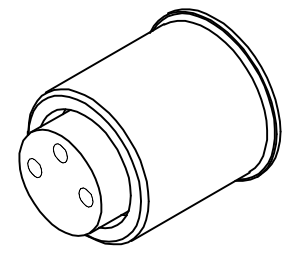
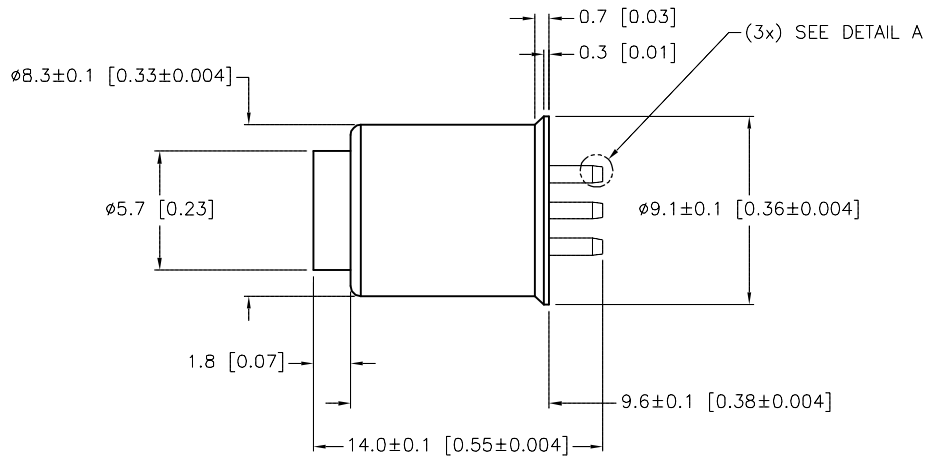
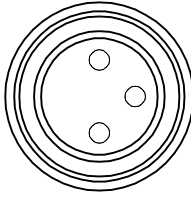
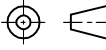


FEMALE END VIEW	TYPICAL BOARD LAYOUT	PIN DETAIL A	SPECIFICATIONS											
			<table border="1"> <tr> <td>CONTACT CARRIER MATERIAL/COLOR</td> <td>NYLON OR TPU/BLACK</td> </tr> <tr> <td>CONTACT MATERIAL/PLATING</td> <td>BRASS/GOLD</td> </tr> <tr> <td>RATED CURRENT [A]</td> <td>4.0 A</td> </tr> <tr> <td>RATED VOLTAGE [V]</td> <td>60 VAC/75VDC</td> </tr> <tr> <td>TEMPERATURE RANGE</td> <td>-30°C to +80°C (-22°F to +176°F)</td> </tr> </table>	CONTACT CARRIER MATERIAL/COLOR	NYLON OR TPU/BLACK	CONTACT MATERIAL/PLATING	BRASS/GOLD	RATED CURRENT [A]	4.0 A	RATED VOLTAGE [V]	60 VAC/75VDC	TEMPERATURE RANGE	-30°C to +80°C (-22°F to +176°F)	
CONTACT CARRIER MATERIAL/COLOR	NYLON OR TPU/BLACK													
CONTACT MATERIAL/PLATING	BRASS/GOLD													
RATED CURRENT [A]	4.0 A													
RATED VOLTAGE [V]	60 VAC/75VDC													
TEMPERATURE RANGE	-30°C to +80°C (-22°F to +176°F)													



ISOMETRIC VIEW

SOURCE DRAWING - FOR REFERENCE ONLY

RELATED DOCUMENTS 1. 2. 3. 4.	3RD ANGLE PROJECTION 	THIS DRAWING IS CONFIDENTIAL AND THE PROPERTY OF TURCK INC. USE OF THIS DOCUMENT WITHOUT WRITTEN PERMISSION IS PROHIBITED.	3000 CAMPUS DRIVE MINNEAPOLIS, MN 55441 1-800-544-7769 (763) 553-7300 (763) 553-0708 fax www.turck.us
MATERIAL SEE SPECIFICATIONS	ALL DIMENSIONS DISPLAYED ON THIS DRAWING ARE FOR REFERENCE ONLY	DRFT JBJ DATE 04/28/99 DSGN SCALE 1=.4	DESCRIPTION MFKB 3 (10/BAG)
FINISH SEE SPECIFICATIONS	CONTACT TURCK FOR MORE INFORMATION	UNIT OF MEASUREMENT MILLIMETER [INCH] DO NOT SCALE THIS DRAWING	IDENTIFICATION NO. E1123 REV C FILE: E1123 SHEET 1 OF 1

C	DRAWING PROCESSED AS PART OF ECO 33971	CBM	04/07/11	33971
REV	DESCRIPTION	BY	DATE	ECO NO.