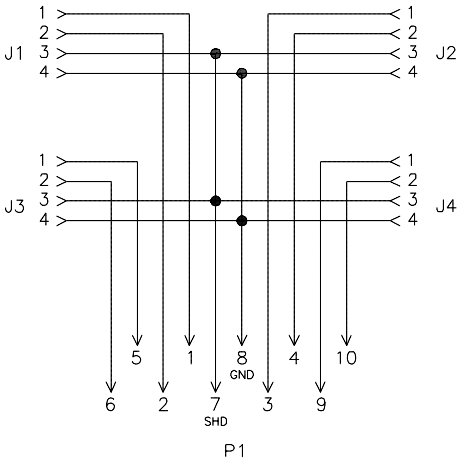
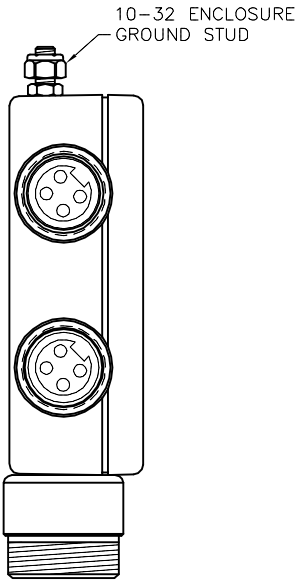
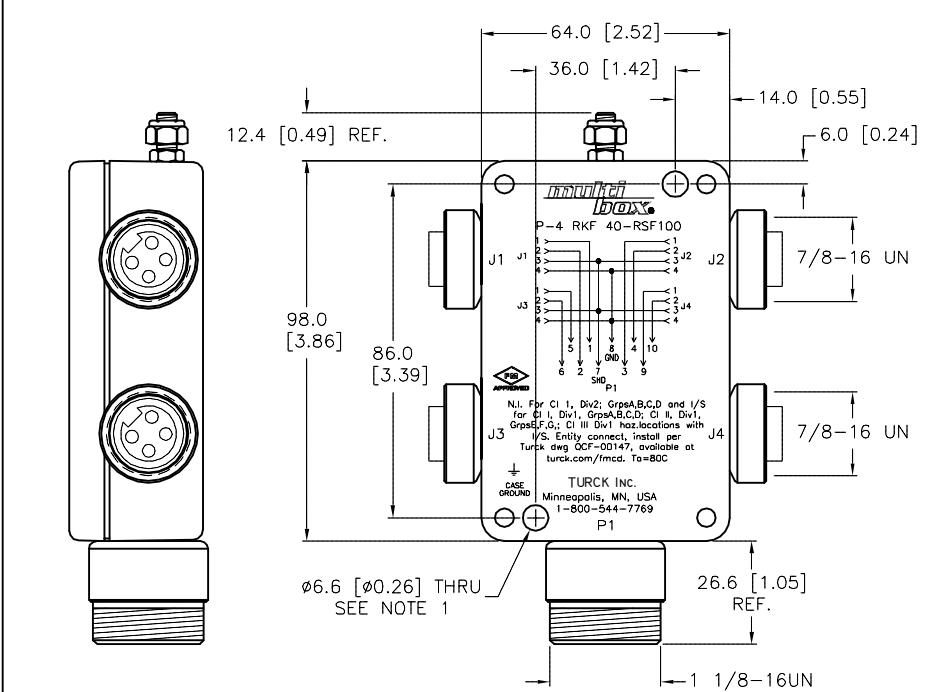
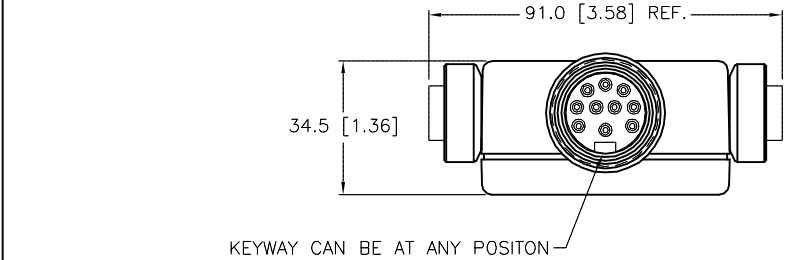


SPECIFICATIONS	
HOUSING MATERIAL	DIE-CAST ALUMINUM ALLOY
HOUSING FINISH/COLOR	POWDER COAT/BLACK
RECEPTACLE HOUSINGS	NICKEL-PLATED BRASS
CONTACT CARRIERS/COLOR (J1-J4)	TPU/BLACK
CONTACT CARRIER/COLOR (P1)	TPU/YELLOW
CONTACTS	BRASS/GOLD
OPERATING VOLTAGE	300 V
OPERATING CURRENT	7.0 AMPS PER PORT
PROTECTION CLASS to DIN 40050	IP 67 - ONLY WHEN ALL RECEPTACLES ARE COVERED WITH PLUGS OR CONNECTED
OPERATING TEMPERATURE	-40°C TO +80°C (-40°F TO +176°F)



WIRING DIAGRAM



NOTES:

1. CLEARANCE HOLE FOR 1/4-20 MOUNTING SCREWS (2 NOT INCLUDED).

SOURCE DRAWING - FOR REFERENCE ONLY

RELATED DOCUMENTS				3RD ANGLE PROJECTION		THIS DRAWING IS CONFIDENTIAL AND THE PROPERTY OF TURCK INC. USE OF THIS DOCUMENT WITHOUT WRITTEN PERMISSION IS PROHIBITED.		3000 CAMPUS DRIVE MINNEAPOLIS, MN 55441 1-800-544-7769 (763) 553-7300 (763) 553-0708 fax www.turck.us	
1. 2. 3. 4.				DRFT RDS		DATE 10/21/08		DESCRIPTION P-4 RKF 40-RSF100	
MATERIAL SEE SPECIFICATIONS				APVD		SCALE 1=2.0		IDENTIFICATION NO. U3-10798	
FINISH SEE SPECIFICATIONS				UNIT OF MEASUREMENT MILLIMETER [ INCH ]		DO NOT SCALE THIS DRAWING		REV E	
E UPDATE TEMP SPEC				RDS 03/26/19		68987		FILE: U3-10798	
REV DESCRIPTION				BY DATE		ECO NO.		SHEET 1 OF 1	