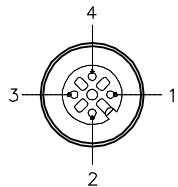
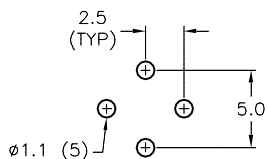


FEMALE END VIEW

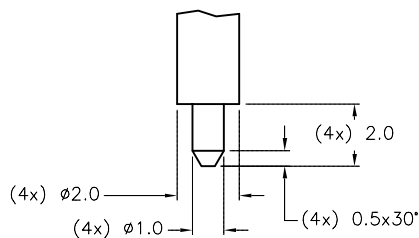
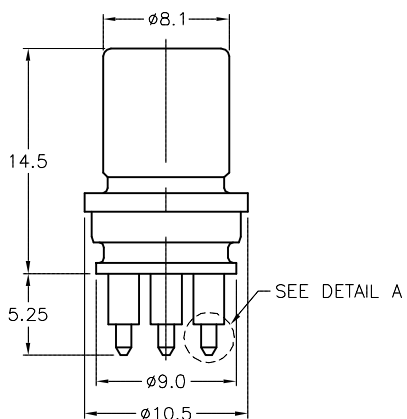
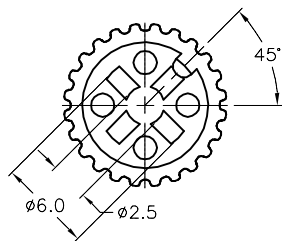


BOARD LAYOUT (TYPICAL)

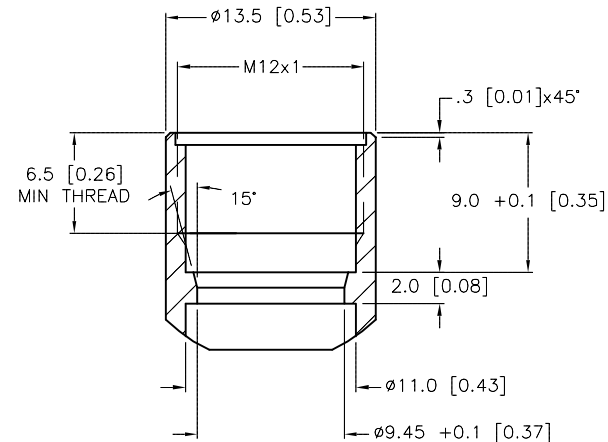


SPECIFICATIONS

CONTACT CARRIER MATERIAL	NYLON OR TPU
CONTACT MATERIAL/PLATING	BRASS/GOLD, MACHINED FROM SOLID STOCK.
RATED CURRENT [A]	4.0 A
RATED VOLTAGE [V]	250 V
TEMPERATURE RATING	-40°C to +90°C (-40°F to +194°F)



DETAIL A  
SCALE: 1=2



RECOMMENDED O-RING SIZE  
7.0mm x 1.5mm

MOUNTING BORE  
(TYPICAL)

SOURCE DRAWING - FOR REFERENCE ONLY

RELATED DOCUMENTS 1. 2. 3. 4.	3RD ANGLE PROJECTION 	THIS DRAWING IS CONFIDENTIAL AND THE PROPERTY OF TURCK INC. USE OF THIS DOCUMENT WITHOUT WRITTEN PERMISSION IS PROHIBITED.		<b>TURCK IAC</b> High Technology Sensors and Automation Controls 3000 CAMPUS DRIVE MINNEAPOLIS, MN 55441 1-800-544-7769 (763) 553-7300 (763) 553-0708 fax turck.com		
	MATERIAL	DRFT IK	DATE 10/27/98	DESCRIPTION EWAK 4.4 PCB (10/BAG)		
	FINISH	ALL DIMENSIONS DISPLAYED ON THIS DRAWING ARE FOR REFERENCE ONLY	APVD	SCALE 1=1	IDENTIFICATION NO. A3031-3	
		CONTACT TURCK FOR MORE INFORMATION	UNIT OF MEASUREMENT <b>MILLIMETERS</b>		REV D	
D	UPDATE 4.9 DIMENSION TO 5.25MM	RDS	03/13/15	49214	DO NOT SCALE THIS DRAWING	
REV	DESCRIPTION	BY	DATE	ECO NO.	FILE: A3031-3	
					SHEET 1 OF 1	

D	UPDATE 4.9 DIMENSION TO 5.25MM	RDS	03/13/15	49214
REV	DESCRIPTION	BY	DATE	ECO NO.