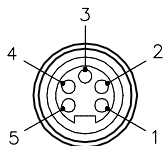
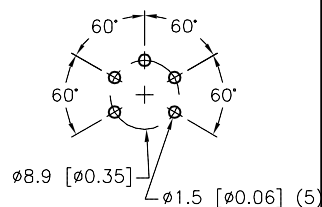


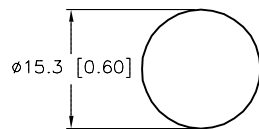
MALE END VIEW



PC BOARD LAYOUT

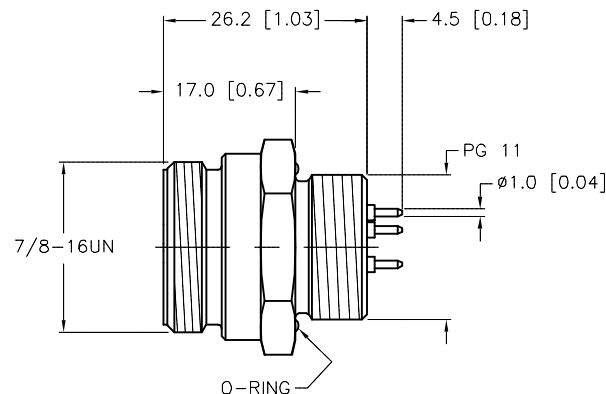
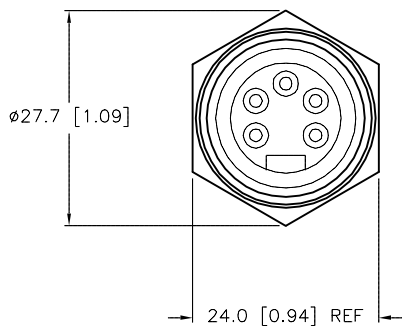


TYPICAL PANEL CUTOUT



SPECIFICATIONS

CONTACT CARRIER MATERIAL	TUP
CONTACT MATERIAL/PLATING	BRASS/GOLD
HOUSING MATERIAL	BRASS/NICKEL
RATED CURRENT [A]	9.0 A
RATED VOLTAGE [V]	160 VAC
NUMBER OF CONDUCTORS	5 PRINTED CIRCUIT PINS
TEMPERATURE RATING	-40°C to +90°C (-40°F to +194°F)
PROTECTION CLASS	MEETS NEMA 1,3,4,6P AND IEC IP67



SOURCE DRAWING - FOR REFERENCE ONLY

RELATED DOCUMENTS 1. 2. 3. 4.	3RD ANGLE PROJECTION 	THIS DRAWING IS CONFIDENTIAL AND THE PROPERTY OF TURCK INC. USE OF THIS DOCUMENT WITHOUT WRITTEN PERMISSION IS PROHIBITED.		3000 CAMPUS DRIVE MINNEAPOLIS, MN 55441 1-800-544-7769 (763) 553-7300 (763) 553-0708 fax www.turck.us	
	MATERIAL	DRFT RDS	DATE 04/15/10	DESCRIPTION RSF 50-PCB	
FINISH	ALL DIMENSIONS DISPLAYED ON THIS DRAWING ARE FOR REFERENCE ONLY	APVD	SCALE 1=1.0	IDENTIFICATION NO. U2309-3	
B ADD PANEL CUTOUT REFERENCE	KMY 12/03/13 43992	UNIT OF MEASUREMENT MILLIMETER [INCH]		REV B	
REV DESCRIPTION	BY DATE ECO NO.	DO NOT SCALE THIS DRAWING		FILE: U2309-3	SHEET 1 OF 1

B	ADD PANEL CUTOUT REFERENCE	KMY	12/03/13	43992
REV	DESCRIPTION	BY	DATE	ECO NO.