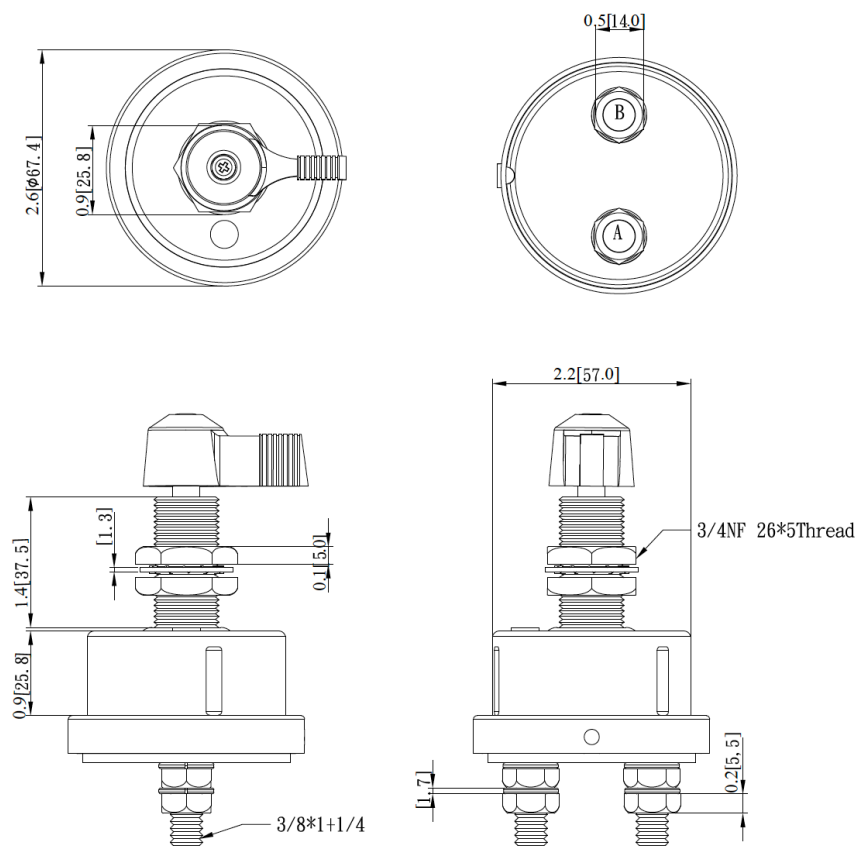
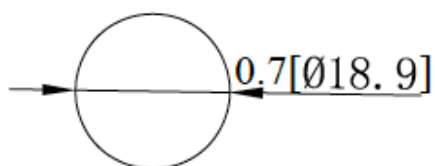


Mechanical Dimensions: Inches [mm]

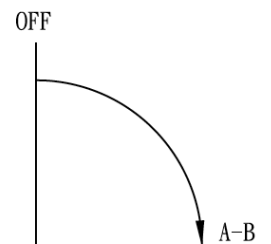
Tolerances ± 0.012 [0.3] Unless Otherwise Specified

Mounting Hole



Circuit Diagram

SPST: Does not disconnect alternator or generator field circuit.



Electrical Specifications

Continuous Rating	175A 25VDC
Intermittent Rating	1000A, 15sec ON 5 min OFF
Insulation Resistance	DC 500V 100M ohm Min
Dielectric Strength	AC 1000V 1 minute

Material Specifications

Chrome-plated lever

Brass case

Battery Disconnect

HDB5-1A-3-A



Rev	Date of issue	Revision Notes	Designed	Approved
A	10-23-2019	Initial Drawing	RC	OF