



Product designation

Signal tower
Ø50mm/1.97"

Product type designation

LTN50

General characteristics

Diameter mm - inch 50 / 1.97

Material Metal

Mechanical features

Weight g 68

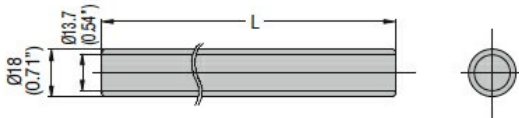
Ambient conditions

Temperature

Operating temperature

min	°C	-30
max	°C	+50

Dimensions



Type	L (mm/in)
LTP50P100	100 (3.94")
LTP50P250	250 (9.84")
LTP50P400	400 (15.75")

Certifications and compliance

Compliance

CSA C22.2 n° 14
IEC/EN/BS 60947-1
IEC/EN/BS 60947-5-1
UL508

Certificates

cULus

ETIM classification

ETIM 8.0

EC001155 -
Tube for signal
tower