



Chicago Pneumatic

1800 Overview Drive • Rock Hill SC • 29730 USA

INSTRUCTION MANUAL

Air Supply Requirements

1. Supply tool with 90 psig (6.2 bar) of clean, dry air. Higher pressure reduces tool life.
2. Connect tool to air line using pipe, hose, and fitting sizes shown in the diagram on page 12.

Lubrication

Use an air line lubricator with air tool oil, adjusted to two drops per minute. If an air line lubricator cannot be used, add air motor oil to the inlet once a day.

Noise & Vibration Declaration*

Sound pressure level 95 dB(A) in accordance with Pneuop PN8NTC1.2. For sound power, add 10 dB(A).

Vibration value 4.8 m/s², re. ISO 8662-2.

Operation

1. To insert chisel, hold chisel end of tool away from face, turn knurled ring clockwise. Insert chisel and turn knurled ring counter-clockwise (exhaust ports will be aligned with cutout in knurled ring).
2. Place cutting edge of chisel against workpiece, depress trigger.
▲ Caution: Do not operate tool without chisel in cylinder, or allow the chisel to be driven out of cylinder. Internal damage will result if piston is allowed to strike cylinder wall.

Maintenance

1. Disassemble and inspect air hammer every three months if the tool is used every day. Replace damaged or worn parts.
2. High wear parts are underlined in the parts list.

*These declared values were obtained by laboratory type testing in compliance with the stated standards and are not adequate for use in risk assessments. Values measured in individual work places may be higher than the declared values. The actual exposure values and risk of harm experienced by an individual user are unique and depend upon the way the user works, the workpiece and the workstation design, as well as upon the exposure time and the physical condition of the user. We, Chicago Pneumatic, cannot be held liable for the consequences of using the declared values, instead of values reflecting the actual exposure, in an individual risk assessment in a work place situation over which we have no control.



WARNING

To reduce risk of injury, everyone using, installing, repairing, maintaining, changing accessories on, or working near this tool must read and understand these instructions before performing any such task.

The goal of Chicago Pneumatic is to produce tools that help you work safely and efficiently. The most important safety device for this or any tool is YOU. Your care and good judgment are the best protection against injury. All possible hazards cannot be covered here, but we have tried to highlight some of the important ones.

For Additional Safety Information Consult:

- ▲ Your employer, union and/or trade association.
- ▲ US Department of Labor (OSHA); Council of the European Communities and/or local codes.
- ▲ "Safety Code for Portable Air Tools" (ANSI B186.1) available from: American National Standards Institute, Inc., 11 W. 42nd Street, New York, NY 10036
- ▲ "Safety Requirements for Hand-Held Non-Electric Power Tools" available from: European Committee for Standardization, Rue de Stassart 36, 1050 Brussels, Belgium

Air Supply And Connection Hazards

- ▲ Air under pressure can cause severe injury.
- ▲ Always shut off air supply, drain hose of air pressure and disconnect tool from air supply when not in use, before changing accessories or when making repairs.
- ▲ Never direct air at yourself or anyone else.
- ▲ Whipping hoses can cause serious injury. Always check for damaged or loose hoses and fittings.
- ▲ Do not use quick disconnect couplings at tool. See instructions for correct setup.
- ▲ Whenever universal twist couplings are used, lock pins must be installed.
- ▲ Do not exceed maximum air pressure of 90 psi/6.2 bar or as stated on tool nameplate.

Projectile Hazards

- ▲ Always wear impact-resistant eye and face protection when involved with or near the operation, repair or maintenance of the tool or changing accessories on the tool.
- ▲ Be sure all others in the area are wearing impact-resistant eye and face protection.
- ▲ Never operate a tool unless the accessory is retained in the tool with a proper retainer (see parts list).
- ▲ To avoid injury, retainer parts must be replaced when they become worn, cracked or distorted.
- ▲ On overhead work, wear a safety helmet.

CP0456 Series Chipping Hammer/ Needle Scaler

Model "B"

P122303 Rev. D

EC DECLARATION OF CONFORMITY

We, Chicago Pneumatic Tool Company, 1800 Overview Drive, Rock Hill, SC 29730 USA, declare under our sole responsibility that the product to which this declaration relates, is in conformity with the requirements of the Council Directive of June 1998 on the approximation of the laws of the Member States relating to machinery (98/37/EC).

Machine Name CP0456 Series Chipping Hammer/Needle Scaler

Machine Type Power Tool with Type WF Retainer 1/2" Qtr. Oct. Retainer for chisel and accessories. - No other use is permitted.

Serial No. Tools with No. 99000B or higher

Technical Data

4300 BPM

Bore and Stroke 15/16" x 1" (23.8 mm x 25.4 mm)

Harmonized Standards Applied EN292

National Standards Applied ISO 8662-2, Pneuop PN8NTC1.2

Name and Position of Issuer W. A. LeNeveu, President, Chicago Pneumatic Product Company

Signature of Issuer

Place and Date of Issue Rock Hill, SC 29704 USA, June 1, 1999

MANUFACTURER'S LIMITED WARRANTY

Limited Warranty: The "Products" of the Chicago Pneumatic Tool Company ("CP") are warranted to be free from defects in material and workmanship for one year from the date of purchase. This Warranty applies only to Products purchased new from CP or its authorized dealers. Of course, this Warranty does not apply to products which have been abused, misused, modified, or repaired by someone other than CP or its Authorized Service Representatives. If a CP Product proves defective in material or workmanship within one year after purchase, return it to any CP Factory Service Center or Authorized Service Center for CP tools, transportation prepaid, enclosing your name and address, adequate proof of date of purchase, and a short description of the defect. CP will, at its option, repair or replace defective Products free of charge. Repairs or replacements are warranted as described above for the remainder of the original warranty period. CP's sole liability and your exclusive remedy under this Warranty is limited to repair or replacement of the defective Product. (There Are No Other Warranties Expressed Or Implied And CP Shall Not Be Liable For Incidental, Consequential, Or Special Damages, Or Any Other Damages, Costs Or Expenses Excepting Only The Cost Or Expense Of Repair Or Replacement As Described Above.)

SAFETY INSTRUCTIONS

Operating Hazards

- ▲ To prevent damage to the tool and accessory, accessory must be held firmly against work surface before tool is throttled.
- ▲ Always shut off air supply, relieve hose of air pressure and disconnect tool from air supply when changing accessories.
- ▲ Avoid direct contact with accessory and work surface during and after work as they become heated and sharp.
- ▲ Wear gloves to protect hands.
- ▲ Operators and maintenance personnel must be physically able to handle the bulk, weight, and power of the tool.
- ▲ Holding the accessory with the free hand can be a source of vibration exposure or injury.

Accessory Hazards

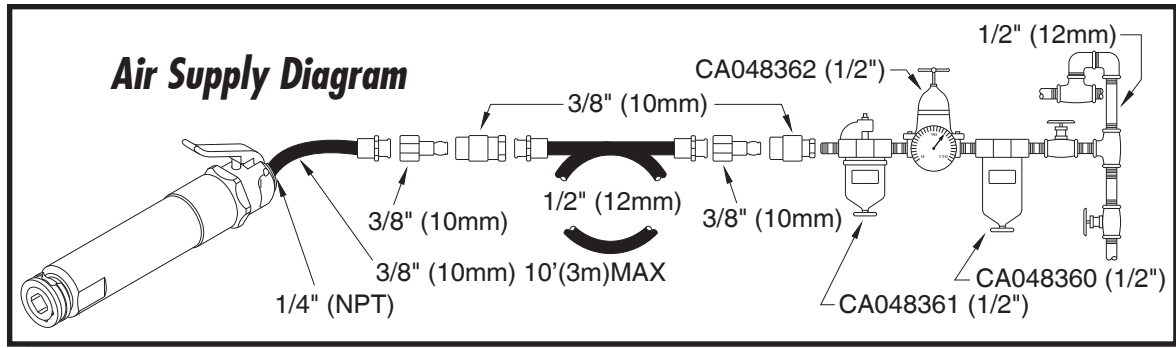
- ▲ Never use any chisel as a hand struck tool. They are specifically designed and heat-treated to be used only in air hammers.
- ▲ Select the correct shank and retainer for the tool being used.
- ▲ Never use dull accessories as they require excessive work pressure and can break from fatigue.
- ▲ Never cool a hot accessory in water. Brittleness and early failure can result.
- ▲ This tool and its accessories must not be modified in any way.
- ▲ Chicago Pneumatic hammers are not intended for use with any accessories that are not listed in the catalog.
- ▲ Accessory breakage or tool damage may result from prying. Take smaller bites to avoid getting struck.

Workplace Hazards

- ▲ Slip/Trip/Fall is a major cause of serious injury or death. Be aware of excess hose left on the walking or work surface.
- ▲ High sound levels can cause permanent hearing loss. Use hearing protection as recommended by your employer or OSHA regulation (see 29 CFR part 1910).
- ▲ Maintain a balanced body position and secure footing.
- ▲ Repetitive work motions, awkward positions and exposure to vibration can be harmful to hands and arms. If numbness, tingling, pain or whitening of the skin occurs, stop using tool and consult a physician.
- ▲ Avoid inhaling dust or handling debris from work process which can be harmful to your health.
- ▲ Proceed with care in unfamiliar surroundings. Hidden hazards may exist, such as electric or other utility lines.
- ▲ This tool is not intended for use in explosive atmospheres and is not insulated for contact with electric power sources.

DO NOT DISCARD - GIVE TO USER

CP0456 Series _____ Chipping Hammer/Needle Scaler



FOR DETAILED INFORMATION ABOUT CHICAGO PNEUMATIC AIR TOOLS AND EQUIPMENT CONTACT:

HEADQUARTERS LOCATION

Chicago Pneumatic Tool Company
1800 Overview Drive
Rock Hill, SC 29730 USA
Telephone: 1-803-817-7000
Industrial/Construction (North America)
Phone: 1-800-624-4735
Industrial Fax: 1-800-367-2442
Construction Fax: 1-800-537-0688

BRASIL

Industrial / Construction
Chicago Pneumatic Tool Brasil
Av. Mascote 159 V. Sta.
Catarina
04363-000
Sao Paulo/SP - Brasil
Telephone: 55 11562 7314
Fax: (011) 563-9208

ITALY

Industrial / Construction
Desoutter Italiana S.r.l.
Viale Repubblica 65
20035 Lissone (Milano) • Italy
Telephone: 039 244101
Fax: 039 4656025

UNITED STATES

Industrial / Construction
Chicago Pneumatic Tool Company
1800 Overview Drive
Rock Hill, SC 29730 USA
Telephone: 1-803-817-7000
Industrial/Construction (North America)
Phone: 1-800-624-4735
Industrial Fax: 1-800-232-6611
Construction Fax: 1-800-537-0688

FRANCE

Industrial / Construction
Sa Ets Georges Renault
199, route de Clisson
F-44230 Saint Sébastien
sur Loire, France
Fax: 33 0240802000
Telephone: 33 0240802000

MEXICO

Industrial / Construction
see United States

AUSTRALIA

Industrial / Construction
Power Tools (Australia) Ltd.
PO Box 6133
Delivery Centre
Blacktown, NSW 2148
Australia
Fax: 61 2671 5915
Telephone: 61 2621 9482

DEUTSCHLAND

Industrial / Construction
Chicago Pneumatic Tool GmbH
Hagenauer Straße 57
D65203 Wiesbaden • Germany
Postfach 120251
D65080 Wiesbaden • Germany
Telefon: 0611-27010
Fax: 0611-270140

SOUTH AFRICA

Industrial / Construction
Alliance Tools S.A.
(PTY) Ltd.
Saigna Street
Hughes Business Park
Witfield X30 Boksburg,
South Africa
Telephone: 27 118219300

Visit our website:

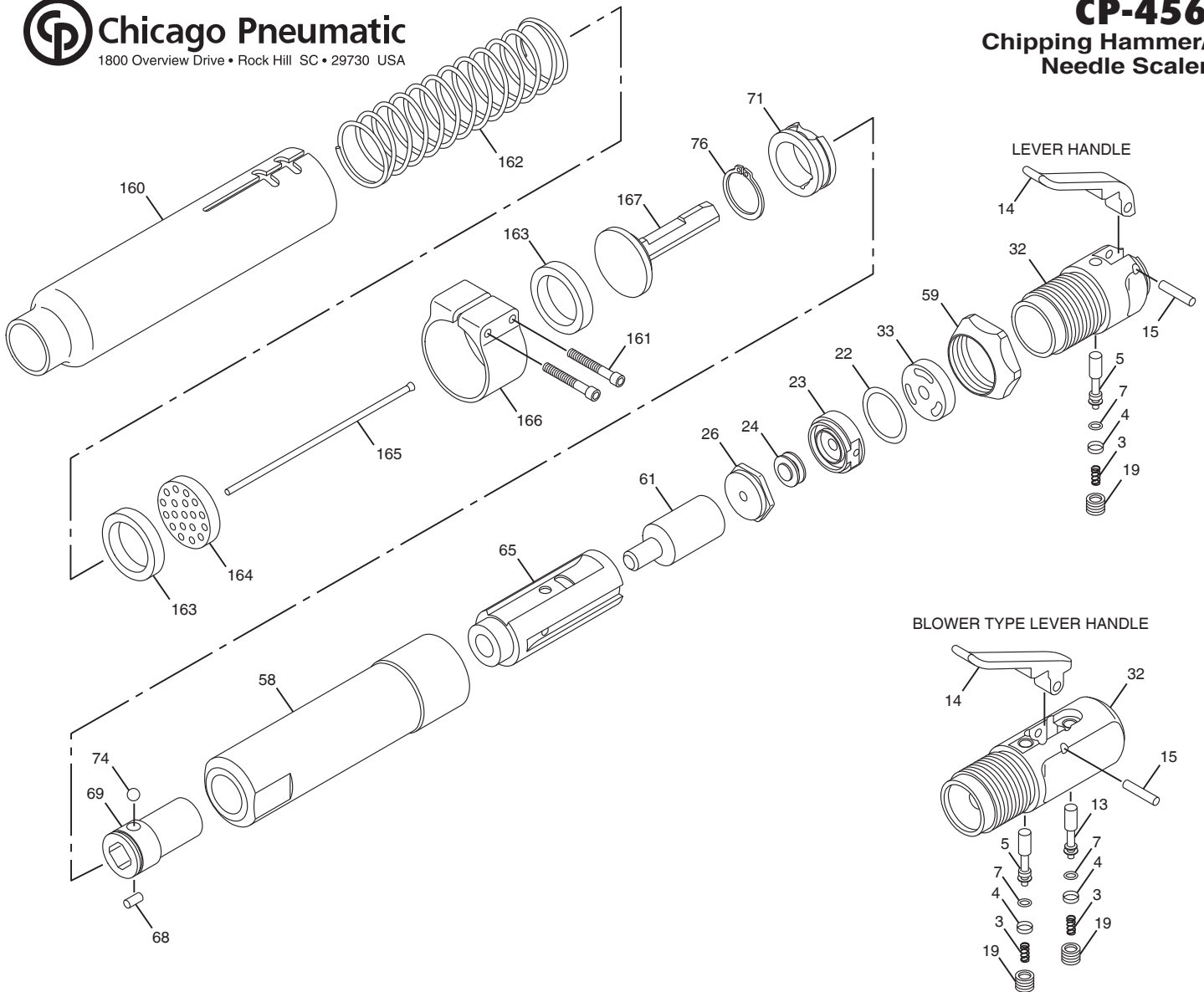
<http://www.chicagopneumatic.com>

INDIA

Industrial / Construction
Chicago Pneumatic Tool Co.
(India) Ltd.
301/302, L.B. Shastri Marg
PO Box 7761
Mulund, Bombay
400 080 • India
Fax: 22-564-7687
Phone: 22-564-0011

UNITED KINGDOM

Industrial / Construction
Chicago Pneumatic Tool
Company Ltd.
PO Box 241,
CP House, Mark Court
37 Mark Road
Hemel Hempstead,
Herts HP2 7RN - England
Fax: 44-442-259866
Telephone: 44-442-213637
Telex: 82448



| Index No. | Part No. | Description | No. Req'd. |
|------------------|-----------------|-----------------------------------|-------------------|
| 3 | P091585 | Spring-Valve | 2 |
| 4 | P091584 | Cap-O-Ring | 2 |
| 5 | P091582 | Valve-Throttle | 1 |
| 7 | P083076 | O-Ring | 2 |
| 13 | P091583 | Valve-Blower | 1 |
| 14 | P041556 | Lever-Throttle | 1 |
| | P084042 | Lever-Throttle (Blower Type) | 1 |
| 15 | P084043 | Pin-Lever | 1 |
| 19 | P009876 | Plug-Valve | 2 |
| 22 | P084037 | Shim (.005 in.) | As |
| | P084038 | Shim (.010 in.) | Req'd |
| 23 | P043309 | Lid | 1 |
| 24 | P043310 | Valve-Cycling (Metalic) | 1 |
| | P119294 | Valve-Cycling (Rubber)(Not Shown) | 1 |
| 26 | P084034 | Case-Valve Cycling | 1 |
| 32 | P109273 | Head-Cylinder | 1 |
| | P113310 | Head-Cylinder (Blower Type) | 1 |
| 33 | P125736 | Spacer-Head | 1 |
| 58 | P113312 | Cylinder (Incl: Index No. 65) | 1 |
| 59 | P109271 | Locknut-Cylinder | 1 |
| 61 | P084033 | Piston | 1 |

| Index No. | Part No. | Description | No. Req'd. |
|------------------|-----------------|---|-------------------|
| 65 | P041557 | Sleeve-Cylinder | 1 |
| 68 | P088815 | Lock-Rubber | 1 |
| 69 | P050933 | Sleeve-Chisel (1/2" Q.O.) | 1 |
| 71 | P088813 | Ring-Chisel Lock | 1 |
| 74 | P070416 | Ball-Steel (5/16") | 1 |
| 76 | P050934 | Ring-Retaining (External)(#5160-98) | 1 |
| 160 | P117630 | Housing (Round Nose) | 1 |
| | P117631 | Housing (Rectangular Nose) | 1 |
| 161 | P117633 | Screw-Soc. Hd. (#10-32 x 1 1/4") | 2 |
| 162 | P100150 | Spring-Compression | 1 |
| 163 | P100964 | Buffer-Holder | 2 |
| 164 | P100145 | Holder-Needle | 1 |
| 165 | P100146 | Set-Needle (7 in.)(Consists of 19 Steel Needles) | 1 |
| | P106454 | Set-Needle (7 in.)(Consists of 19 Stainless Steel Needles) | 1 |
| | P106455 | Set-Needle (7 in.)(Consists of 19 Beryllium Copper Needles) | 1 |
| 166 | P117632 | Clamp-Housing | 1 |
| 167 | P100144 | Anvil | 1 |
| 168 | CA144007 | Decal-Safety Warning (Not Shown) | 1 |