



# T8

## 16.5T8/CNG/48-850/MF21/G 25/1

Our TLEDs are available in InstantFit (Type A / Type C) or MainsFit (Ballast bypass / Type B) versions. The InstantFit lamps work on a broad variety of ballasts and LED drivers. Only InstantFit has over 15,000 lamp & ballast combinations delivering even light output, energy savings and a long lifetime. Our MainsFit products feature a double-ended design, simplifying installation while a proprietary safety circuit minimizes a shock risk. Lamp sizes range from 2-foot to 8-foot and U-bend with a variety of lumen outputs.

### Product data

General information		Power (Rated) (Nom)	
Base	G13 [ Medium Bi-Pin Fluorescent]		16.5 W
EU RoHS compliant	Yes	Lamp Current (Max)	134 mA
Nominal Lifetime (Nom)	50000 h	Lamp Current (Min)	58 mA
Switching Cycle	50000	Starting Time (Nom)	0.5 s
Tier	CorePro	Warm Up Time to 60% Light (Nom)	0.5 s
Light technical		UL Type	TLED_Type B; UL classified double end
Color Code	850 [ CCT of 5000K]	Power Factor (Nom)	0.9
Beam Angle (Nom)	240 °	Voltage (Nom)	120-277 V
Initial lumen (Nom)	2100 lm	Temperature	
Color Designation	Daylight	T-Ambient (Max)	113 °F
Correlated Color Temperature (Nom)	5000 K	T-Ambient (Min)	-4 °F
Luminous Efficacy (rated) (Nom)	127.00 lm/W	T-Storage (Max)	149 °F
Color Consistency	<5	T-Storage (Min)	-40 °F
Color Rendering Index (Nom)	80	T-Case Maximum (Nom)	158 °F
LLMF At End Of Nominal Lifetime (Nom)	70 %	Controls and dimming	
Operating and electrical		Dimmable	Limited
Input Frequency	50 to 60 Hz		

# T8

## Mechanical and housing

Bulb Finish	Frosted
Bulb Material	Glass
Product Length	47-1/4 in
Bulb Shape	Tube, double-ended

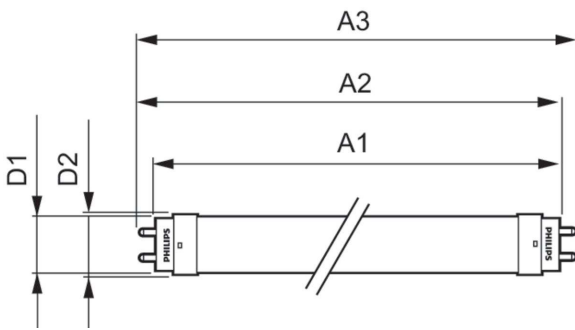
## Approval and application

Energy Saving Product	Yes
Approval Marks	RoHS compliance UL certificate DLC compliance

## Product data

Order product name	16.5T8/CNG/48-850/MF21/G 25/1
EAN/UPC - Product	046677579067
Order code	579060
Numerator - Quantity Per Pack	1
Numerator - Packs per outer box	25
Material Nr. (12NC)	929003510804
Net Weight (Piece)	0.419 lb

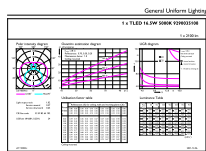
## Dimensional drawing



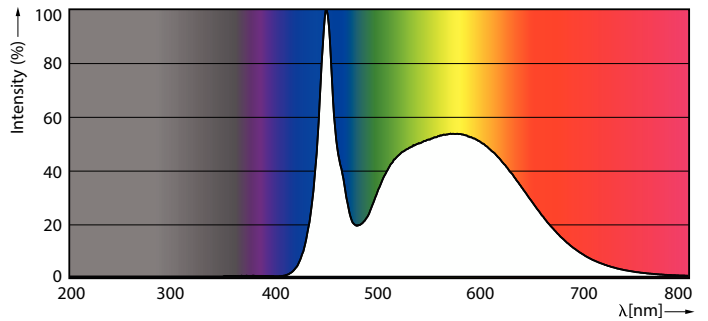
16.5T8/BCP/48-850/MF21/G 25/1

Product	D1	D2	A1	A2	A3
16.5T8/BCP/48-850/MF21/G 25/1	1-1/16 in	1-1/8 in	47-3/16 in	47-1/2 in	47-3/4 in

## Photometric data

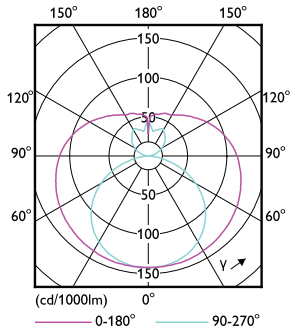


LEDtube BCP NAM 16,5W G13 2100lm 850-GUL



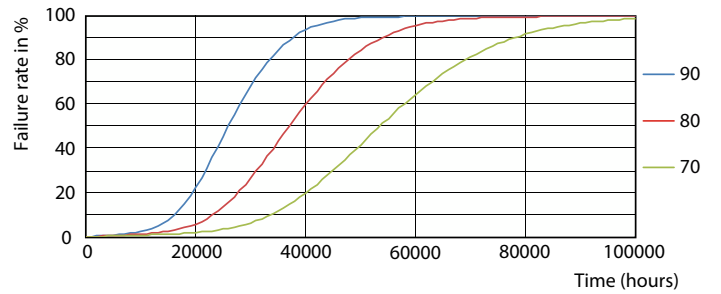
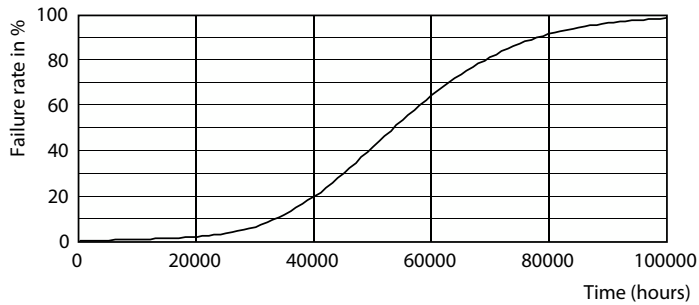
LEDtube BCP NAM 16,5W G13 2100lm 850-POC

Photometric data

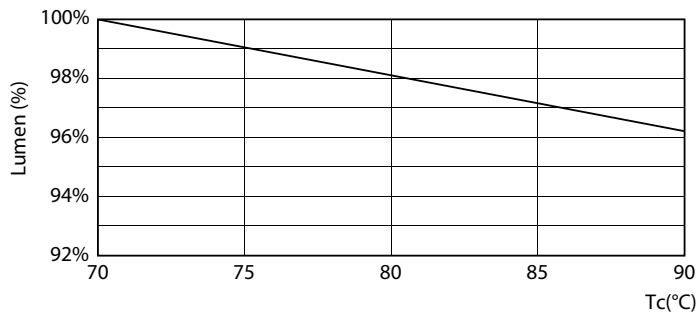


LEDtube BCP NAM 16,5W G13 2100lm 1-LDD

Lifetime

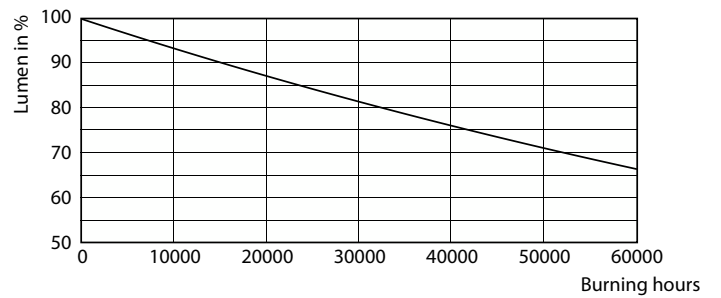


Life Expectancy Diagram



LEDtube BCP NAM 16,5W 50K LumenVsTc-LMP

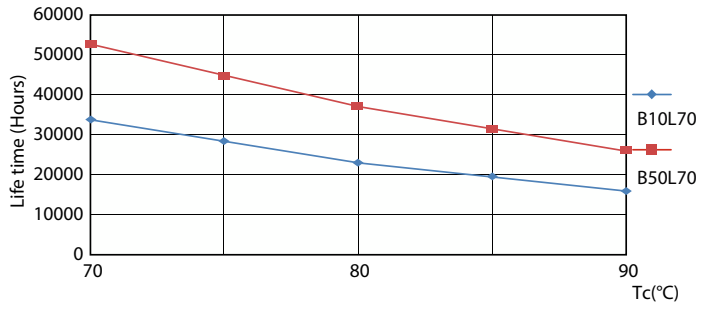
FailureRate



Lumen Maintenance Diagram

# T8

## Lifetime



LifetimeVsTc

