

T8

9.9T8/COR/48-850/MF16/G 10/1

Philips MainsFit (UL Type B) CorePro T8 LED tubes deliver high-quality, flicker free performance at an affordable price. The UL Type B LED tubes are designed with easy installation and long-term maintenance simplicity in mind. Upgrade your lighting to Philips and realize 50,000 hour LED lifetime backed by a 5-year, full replacement limited warranty. The DLC 5.1 listed products are compatible with Philips new PTB15D emergency driver meeting UL 924 requirements.

Product data

General information		Lamp Current (Max)		85 mA
Base	G13 [Medium Bi-Pin Fluorescent]	Lamp Current (Min)	40 mA	
EU RoHS compliant	Yes	Wattage Equivalent	32 W	
Nominal Lifetime (Nom)	50000 h	Starting Time (Nom)	0.5 s	
Switching Cycle	50000	Warm Up Time to 60% Light (Nom)	0.5 s	
Tier	CorePro	UL Type	Type B - bypass the ballast	
Light technical		Power Factor (Nom)	0.9	
Color Code	850 [CCT of 5000K]	Voltage (Nom)	120-277 V	
Beam Angle (Nom)	240 °	Temperature		
Initial lumen (Nom)	1600 lm	T-Ambient (Max)	113 °F	
Color Designation	Daylight	T-Ambient (Min)	-4 °F	
Correlated Color Temperature (Nom)	5000 K	T-Storage (Max)	149 °F	
Luminous Efficacy (rated) (Nom)	161.00 lm/W	T-Storage (Min)	-40 °F	
Color Consistency	<5	T-Case Maximum (Nom)	158 °F	
Color Rendering Index (Nom)	80	Controls and dimming		
LLMF At End Of Nominal Lifetime (Nom)	70 %	Dimmable	Limited	
Operating and electrical		Mechanical and housing		
Input Frequency	50 to 60 Hz	Bulb Finish	Frosted	
Power (Rated) (Nom)	9.9 W			

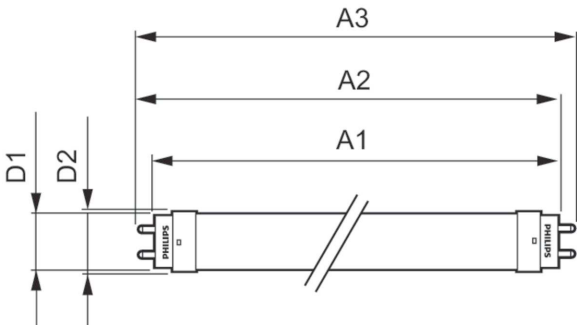
Bulb Material	Glass
Product Length	47-1/4 in
Bulb Shape	Tube, double-ended
Approval and application	
Energy Saving Product	Yes
Approbation Marks	RoHS compliance UL certificate DLC compliance
Energy Consumption kWh/1000 h	- kWh

Product data

Order product name	9.9T8/COR/48-850/MF16/G 10/1
--------------------	------------------------------

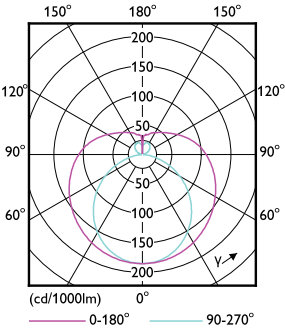
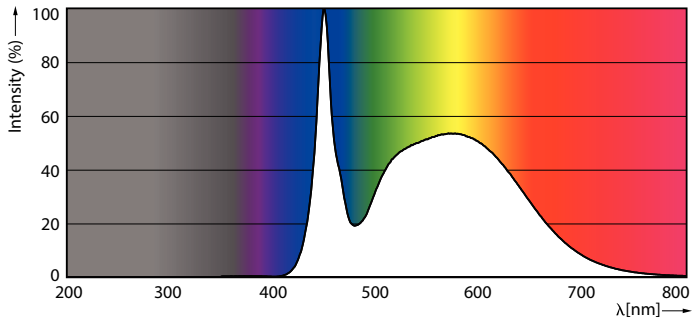
EAN/UPC - Product	046677563479
Order code	563478
Numerator - Quantity Per Pack	1
Numerator - Packs per outer box	10
Material Nr. (12NC)	929002483904
Net Weight (Piece)	0.441 lb
Model Number	9290024839

Dimensional drawing



Product	D1	D2	A1	A2	A3
9.9T8/COR/48-850/MF16/G 10/1	1-1/16 in	1-1/8 in	47-3/16 in	47-1/2 in	47-3/4 in

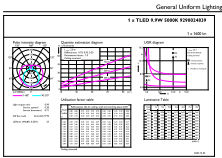
Photometric data



LEDtube COR 9,9W G13 1600lm 850

LEDtube COR 9,9W G13 1550lm

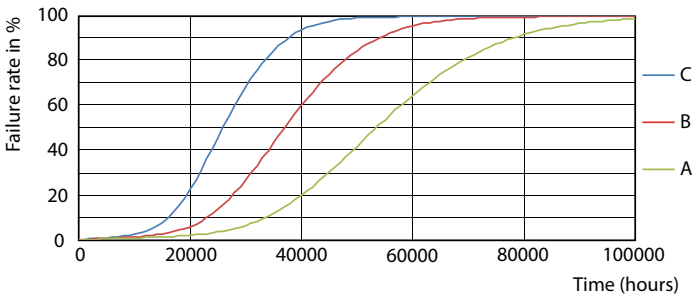
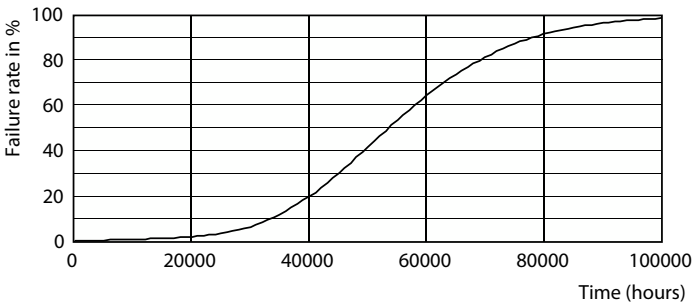
Photometric data



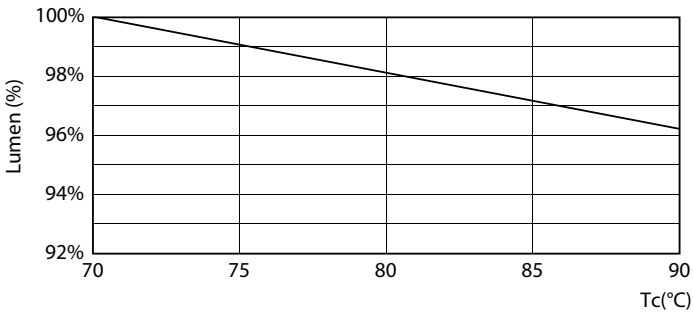
General Photometric Data Page 10 of 10

LEDtube COR 9,9W G13 1600lm 850

Lifetime

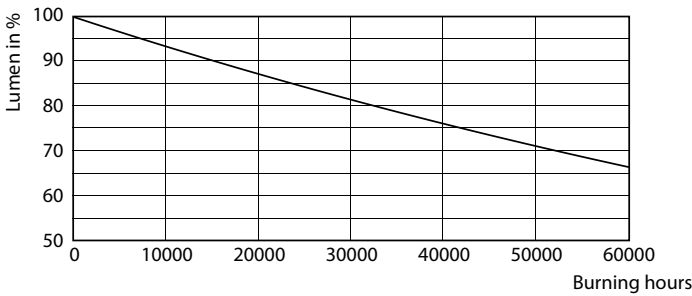


Life Expectancy Diagram



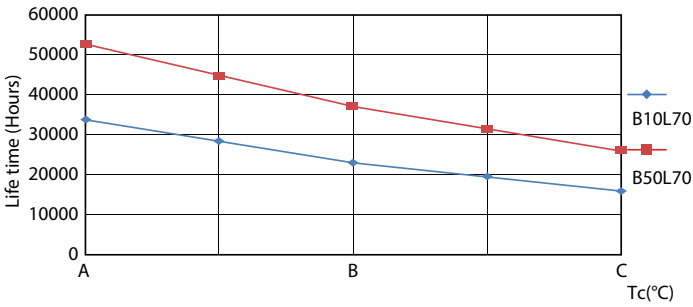
LEDtube COR 9,9W 50K LumenVsTc

LEDtube 50K FailureRate-LED



Lumen Maintenance Diagram

Lifetime



LEDtube 50K LifetimeVsTc-LED

