



T8

11.5T8/COR/36-835/MF13/G 10/1

Philips MainsFit (UL Type B) CorePro T8 LED tubes deliver high-quality, flicker free performance at an affordable price. The UL Type B LED tubes are designed with easy installation and long-term maintenance simplicity in mind. Upgrade your lighting to Philips and realize 50,000 hour LED lifetime backed by a 5-year, full replacement limited warranty.

Product data

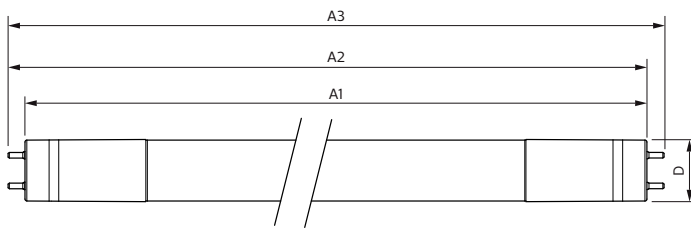
General information		Lamp Current (Min)	
Base	G13 [Medium Bi-Pin Fluorescent]		47 mA
EU RoHS compliant	Yes	Wattage Equivalent	25 W
Nominal Lifetime (Nom)	50000 h	Starting Time (Nom)	0.9 s
Switching Cycle	50000	Warm Up Time to 60% Light (Nom)	0.9 s
Tier	CorePro	UL Type	Type B - bypass the ballast
		Power Factor (Nom)	0.9
		Voltage (Nom)	120-277 V
Light technical		Temperature	
Color Code	835 [CCT of 3500K]	T-Ambient (Max)	113 °F
Beam Angle (Nom)	180 °	T-Ambient (Min)	-4 °F
Initial lumen (Nom)	1300 lm	T-Storage (Max)	149 °F
Color Designation	White (WH)	T-Storage (Min)	-40 °F
Correlated Color Temperature (Nom)	3500 K	T-Case Maximum (Nom)	122 °F
Luminous Efficacy (rated) (Nom)	113.00 lm/W		
Color Consistency	<6	Controls and dimming	
Color Rendering Index (Nom)	82	Dimmable	No
LLMF At End Of Nominal Lifetime (Nom)	70 %		
Operating and electrical		Mechanical and housing	
Input Frequency	50 to 60 Hz	Bulb Finish	Frosted
Power (Rated) (Nom)	11.5 W	Bulb Material	Glass
Lamp Current (Max)	101 mA	Product Length	35-7/16 in

T8

Bulb Shape	Tube, double-ended
Approval and application	
Energy Saving Product	Yes
Approval Marks	UL certificate RoHS compliance DLC compliance
Energy Consumption kWh/1000 h	- kWh
Energy Certifications	DLC Standard
Product data	
Order product name	11.5T8/COR/36-835/MF13/G 10/1

EAN/UPC - Product	046677535506
Order code	535500
Numerator - Quantity Per Pack	1
Numerator - Packs per outer box	10
Material Nr. (12NC)	929001934304
Net Weight (Piece)	0.551 lb
Model Number	9290019343

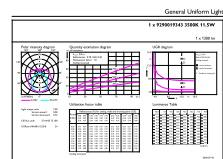
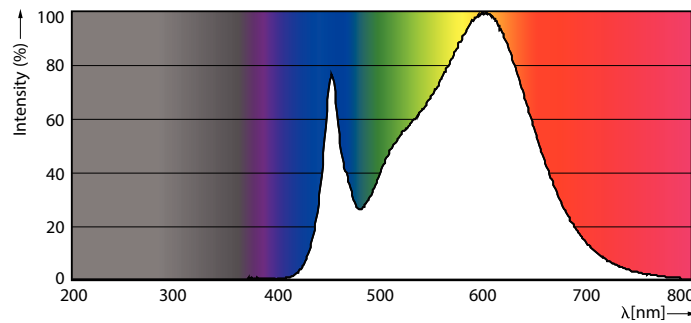
Dimensional drawing



Product	D	A1	A2	A3
11.5T8/COR/36-835/MF13/G 10/1	1-1/16 in	35-1/4 in	35-1/2 in	35-13/16 in

11.5T8/COR/36-835/MF13/G 10/1

Photometric data

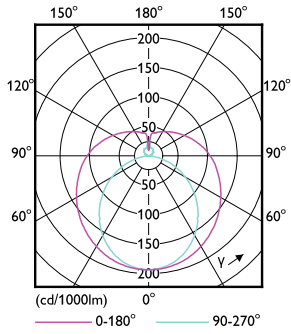


©2022 Philips Lighting B.V. Philips Lighting B.V. Page 1/1

11-5W G13

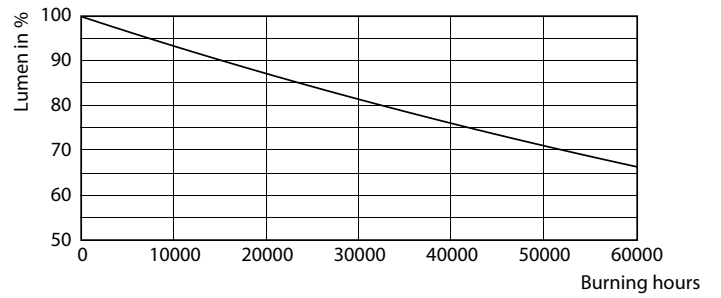
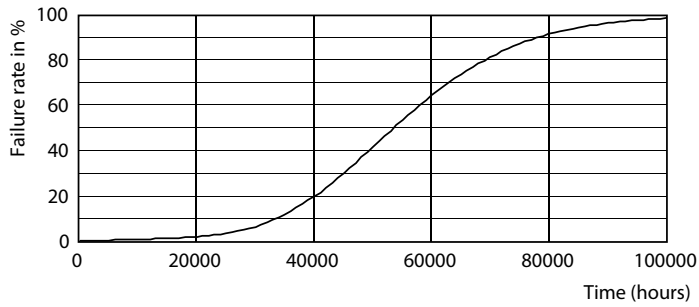
11-5W G13 835 3500K

Photometric data



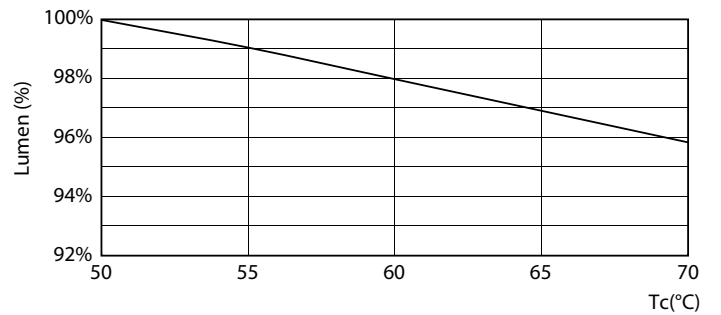
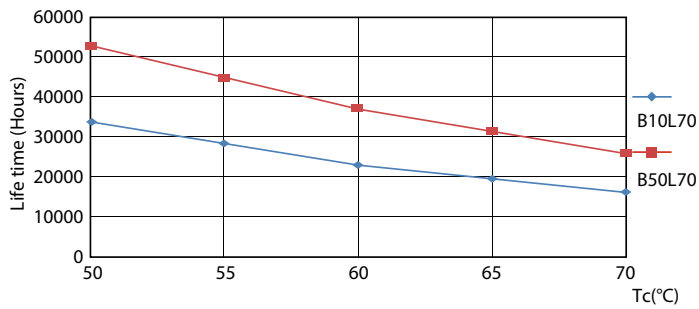
11.5W G13 840

Lifetime



8.5W G13

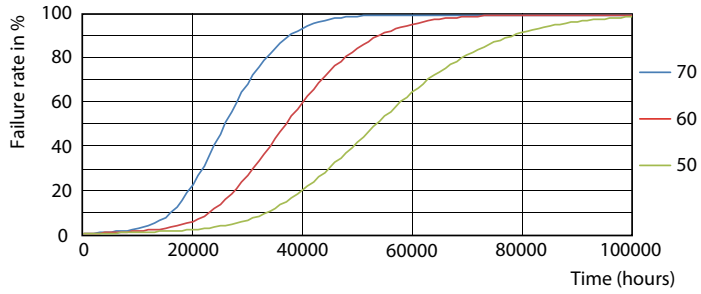
8.5W G13



8.5W G13

11.5W

Lifetime



8.5W G13

