



PL-L

16.5PL-L/COR/22-840/IF23/P/4P/DIM 10/1

Philips InstantFit LED lamps make the transition to LED from CFL lamps as simple as replacing a lamp. With a wide array of color temperatures, the InstantFit LED lamps can quickly and effectively replace compact fluorescent lamps.

Product data

General information	
Base	2G11 [2G11]
EU RoHS compliant	Yes
Nominal Lifetime (Nom)	50000 h
Switching Cycle	50000
Tier	CorePro

Light technical	
Color Code	841 [CCT of 4100K (841)]
Beam Angle (Nom)	160 °
Initial lumen (Nom)	2300 lm
Color Designation	Cool White (CW)
Correlated Color Temperature (Nom)	4000 K
Luminous Efficacy (rated) (Nom)	139.00 lm/W
Color Consistency	<6
Color Rendering Index (Nom)	82
LLMF At End Of Nominal Lifetime (Nom)	70 %

Operating and electrical	
Input Frequency	40000-160000 Hz
Power (Rated) (Nom)	16.5 W
Lamp Current (Max)	400 mA
Lamp Current (Min)	200 mA
Wattage Equivalent	40 W

Starting Time (Nom)	
Starting Time (Nom)	0.5 s
Warm Up Time to 60% Light (Nom)	0.5 s
UL Type	Type A - works on ballast
Power Factor (Nom)	0.9
Voltage (Nom)	70-110 V

Temperature	
T-Ambient (Max)	113 °F
T-Ambient (Min)	-4 °F
T-Storage (Max)	149 °F
T-Storage (Min)	-40 °F
T-Case Maximum (Nom)	167 °F

Controls and dimming	
Dimmable	No

Mechanical and housing	
Bulb Finish	Frosted
Bulb Material	Plastic
Product Length	22-7/8 in
Bulb Shape	Tube, single-ended

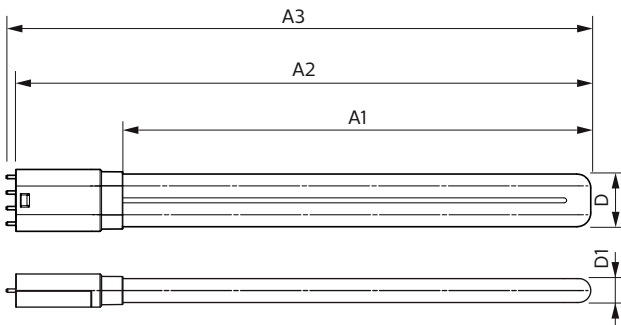
Approval and application	
Energy Saving Product	Yes

PL-L

Approval Marks	UL certificate RoHS compliance DLC compliance
Energy Consumption kWh/1000 h	- kWh
Energy Certifications	DLC Standard
Product data	
Order product name	16.5PL-L/COR/22-840/IF23/P/4P/DIM 10/1
EAN/UPC - Product	046677532918

Order code	532911
Numerator - Quantity Per Pack	1
Numerator - Packs per outer box	10
Material Nr. (12NC)	929001893704
Net Weight (Piece)	0.375 lb
Model Number	9290018937

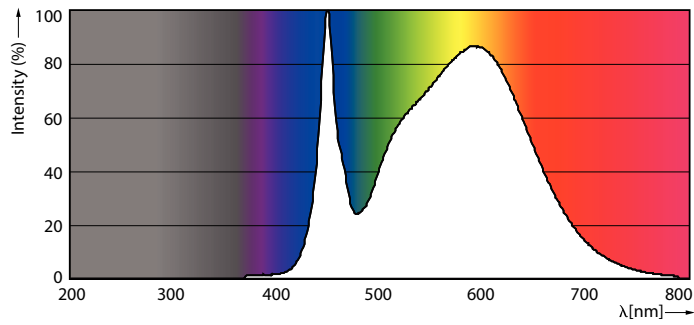
Dimensional drawing



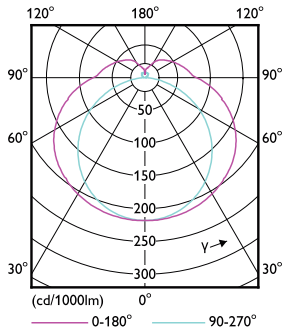
16.5PL-L/COR/22-840/IF23/P/4P/DIM 10/1

Product	D	D1	A1	A2	A3
16.5PL-L/COR/22-840/IF23/P/4P/DIM 10/1	1-5/8 in	13/16 in	19-3/4 in	22-1/4 in	22-1/2 in

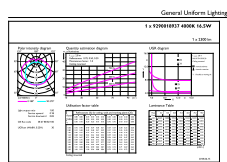
Photometric data



16-5W 2G11

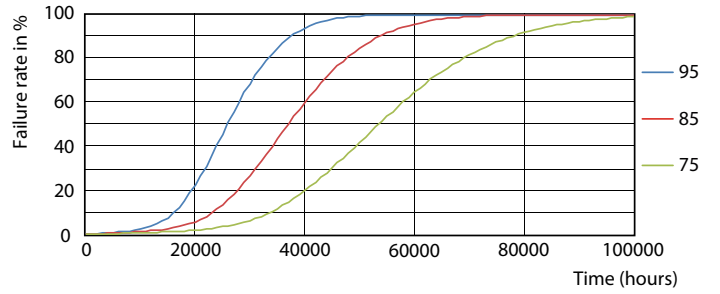
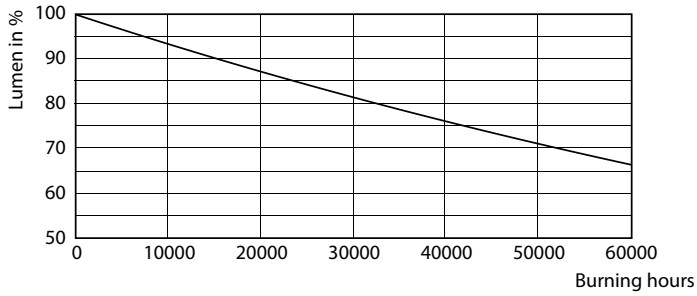


16-5W 2G11 830 3000K

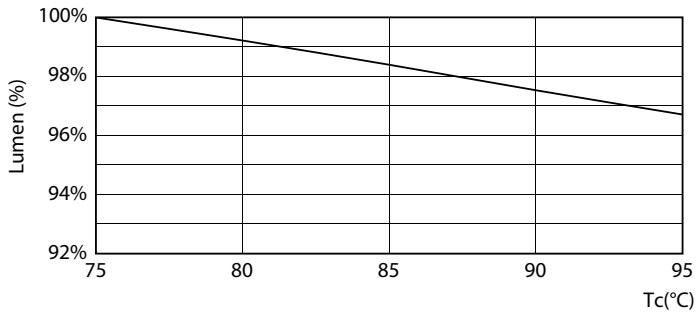


16-5W 2G11 840 4000K

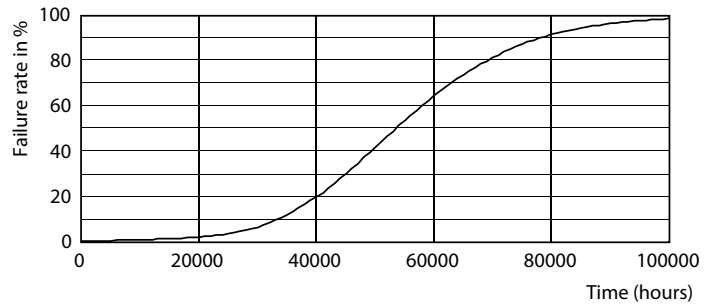
Lifetime



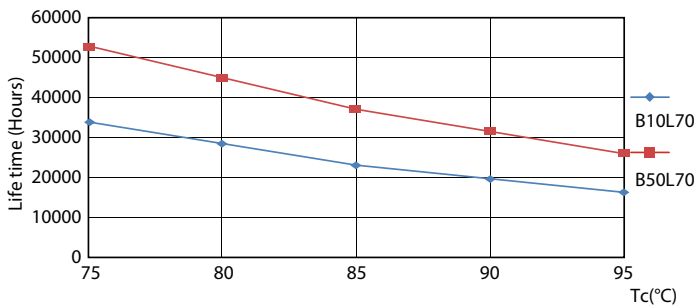
16-5W 2G11



16-5W 2G11



16-5W 2G11



16-5W 2G11

16-5W 2G11

