



# T8

## 8.5T8/MAS/36-850/IF14/P/DIM 10/1

Our TLEDs are available in InstantFit (Type A / Type C) or MainsFit (Ballast bypass / Type B) versions. The InstantFit lamps work on a broad variety of ballasts and LED drivers. Only InstantFit has over 15,000 lamp & ballast combinations delivering even light output, energy savings and a long lifetime. Our MainsFit products feature a double-ended design, simplifying installation while a proprietary safety circuit minimizes a shock risk. Lamp sizes range from 2-foot to 8-foot and U-bend with a variety of lumen outputs.

### Product data

General information	
Base	G13 [ Medium Bi-Pin Fluorescent]
EU RoHS compliant	Yes
Nominal Lifetime (Nom)	70000 h
Switching Cycle	50000
Technical Type	LEDTECH-LOV
Tier	MasterClass
Light technical	
Color Code	850 [ CCT of 5000K]
Beam Angle (Nom)	180 °
Initial lumen (Nom)	1400 lm
Color Designation	Daylight
Correlated Color Temperature (Nom)	5000 K
Luminous Efficacy (rated) (Nom)	164 lm/W
Color Consistency	<5
Color Rendering Index (Nom)	80
LLMF At End Of Nominal Lifetime (Nom)	70 %

Operating and electrical	
Input Frequency	20K to 120K Hz
Power (Rated) (Nom)	8.5 W
Lamp Current (Max)	280 mA
Lamp Current (Min)	50 mA
Wattage Equivalent	25 W
Starting Time (Nom)	0.5 s
Warm Up Time to 60% Light (Nom)	0.5 s
UL Type	TLED_Type A; UL listed HF
Power Factor (Nom)	0.9
Voltage (Nom)	120-277,347 V
Temperature	
T-Ambient (Max)	113 °F
T-Ambient (Min)	-4 °F
T-Storage (Max)	149 °F
T-Storage (Min)	-40 °F
T-Case Maximum (Nom)	104 °F

# T8

## Controls and dimming

**Dimmable** Only with specific dimmers

## Mechanical and housing

**Bulb Finish** Frosted  
**Bulb Material** Plastic  
**Product Length** 35-7/16 in  
**Bulb Shape** Tube, double-ended

## Approval and application

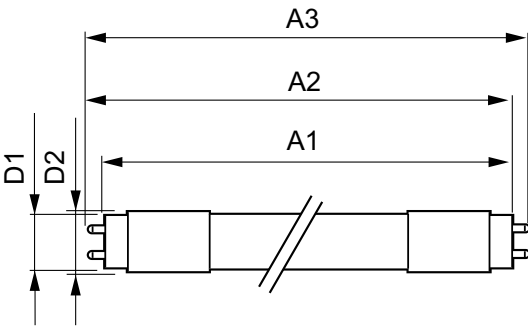
**Energy Saving Product** Yes  
**Approval Marks** RoHS compliance UL certificate DLC compliance  
**Energy Consumption kWh/1000 h** - kWh

**Energy Certifications** DLC Standard

## Product data

**Order product name** 8.5T8/MAS/36-850/IF14/P/DIM 10/1  
**EAN/UPC - Product** 046677539887  
**Order code** 539882  
**Numerator - Quantity Per Pack** 1  
**Numerator - Packs per outer box** 10  
**Material Nr. (12NC)** 929001967704  
**Net Weight (Piece)** 0.287 lb  
**Model Number** 9290019677

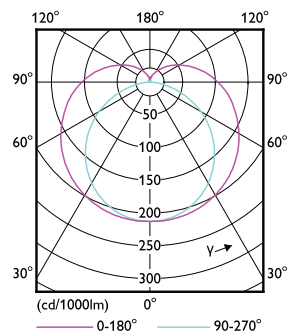
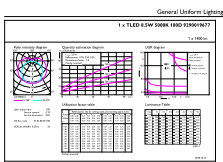
## Dimensional drawing



8.5T8/MAS/36-850/IF14/P/DIM 10/1

Product	D1	D2	A1	A2	A3
8.5T8/MAS/36-850/IF14/P/DIM 10/1	1-1/16 in	1-1/16 in	35-3/16 in	35-1/2 in	35-3/4 in

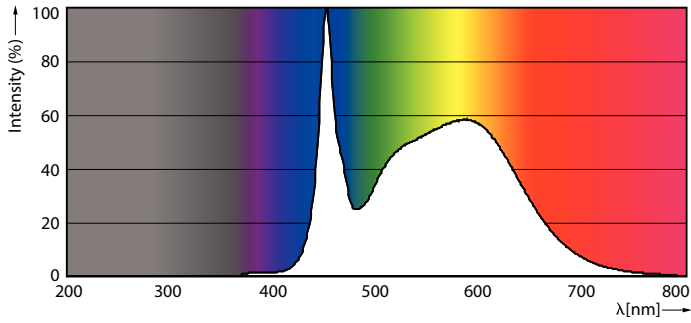
## Photometric data



G13 5000K 1400lm

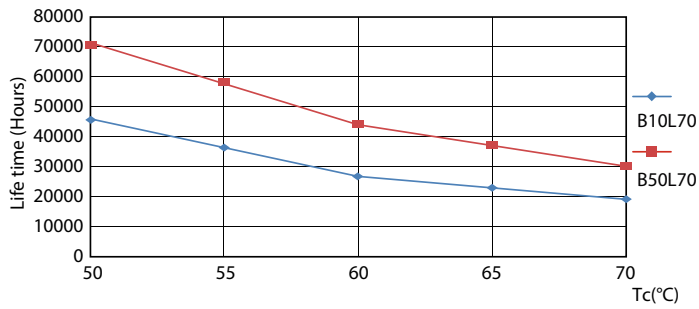
G13 4000K

Photometric data

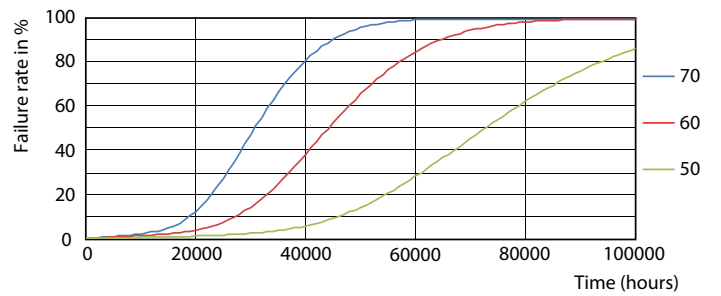


G13 5000K 1400lm

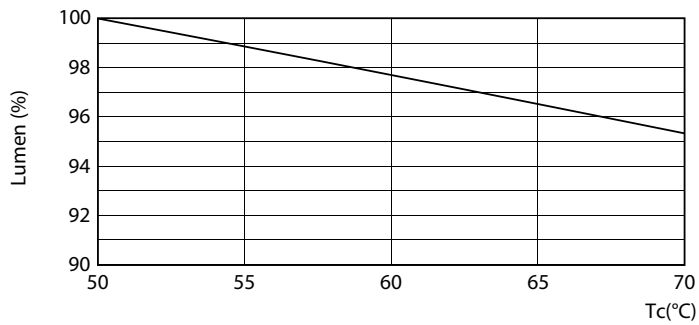
Lifetime



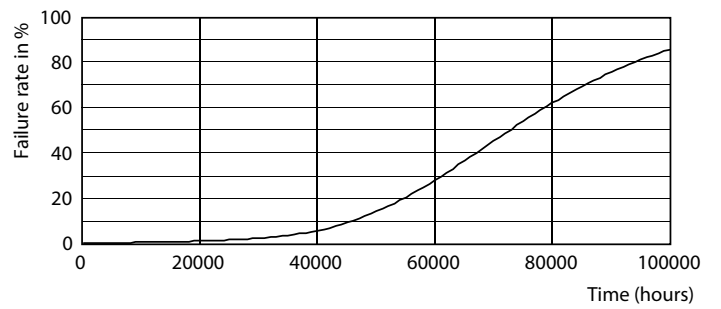
G13 4000K



G13 4000K



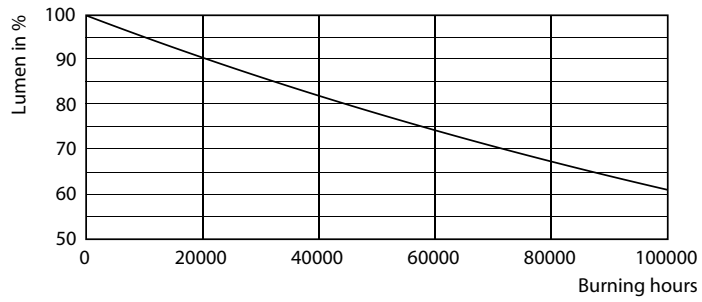
G13 4000K



G13 4000K

# T8

## Lifetime



G13 4000K

