



T8

8.5T8/MAS/36-835/IF13/P/DIM 10/1

Our TLEDs are available in InstantFit (Type A / Type C) or MainsFit (Ballast bypass / Type B) versions. The InstantFit lamps work on a broad variety of ballasts and LED drivers. Only InstantFit has over 15,000 lamp & ballast combinations delivering even light output, energy savings and a long lifetime. Our MainsFit products feature a double-ended design, simplifying installation while a proprietary safety circuit minimizes a shock risk. Lamp sizes range from 2-foot to 8-foot and U-bend with a variety of lumen outputs.

Product data

General information	
Base	G13 [Medium Bi-Pin Fluorescent]
EU RoHS compliant	Yes
Nominal Lifetime (Nom)	70000 h
Switching Cycle	50000
Technical Type	LEDTECH-LOV
Tier	MasterClass
Light technical	
Color Code	835 [CCT of 3500K]
Beam Angle (Nom)	180 °
Initial lumen (Nom)	1350 lm
Color Designation	White (WH)
Correlated Color Temperature (Nom)	3500 K
Luminous Efficacy (rated) (Nom)	158 lm/W
Color Consistency	<6
Color Rendering Index (Nom)	80
LLMF At End Of Nominal Lifetime (Nom)	70 %

Operating and electrical	
Input Frequency	20K to 120K Hz
Power (Rated) (Nom)	8.5 W
Lamp Current (Max)	280 mA
Lamp Current (Min)	50 mA
Wattage Equivalent	25 W
Starting Time (Nom)	0.5 s
Warm Up Time to 60% Light (Nom)	0.5 s
UL Type	TLED_Type A; UL listed HF
Power Factor (Nom)	0.9
Voltage (Nom)	120-277,347 V
Temperature	
T-Ambient (Max)	113 °F
T-Ambient (Min)	-4 °F
T-Storage (Max)	149 °F
T-Storage (Min)	-40 °F
T-Case Maximum (Nom)	104 °F

T8

Controls and dimming

Dimmable	Only with specific dimmers
----------	----------------------------

Mechanical and housing

Bulb Finish	Frosted
Bulb Material	Plastic
Product Length	35-7/16 in
Bulb Shape	Tube, double-ended

Approval and application

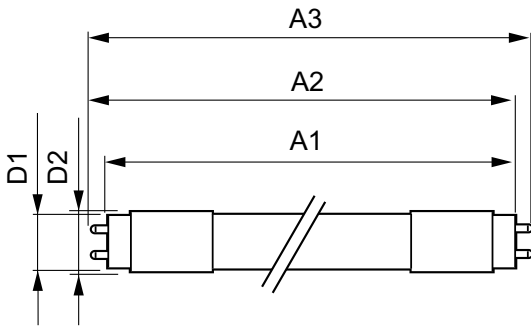
Energy Saving Product	Yes
Approval Marks	RoHS compliance UL certificate DLC compliance
Energy Consumption kWh/1000 h	- kWh

Energy Certifications	DLC Standard
-----------------------	--------------

Product data

Order product name	8.5T8/MAS/36-835/IF13/P/DIM 10/1
EAN/UPC - Product	046677539863
Order code	539866
Numerator - Quantity Per Pack	1
Numerator - Packs per outer box	10
Material Nr. (12NC)	929001967904
Net Weight (Piece)	0.287 lb
Model Number	9290019679

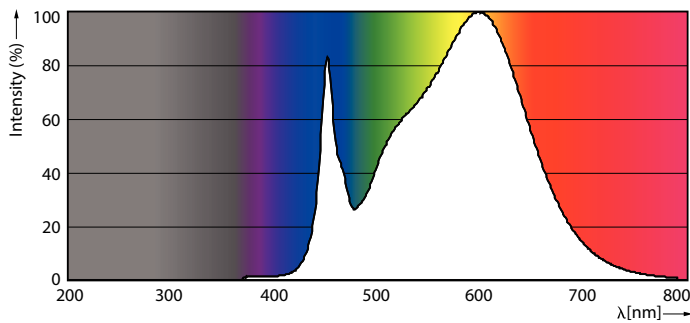
Dimensional drawing



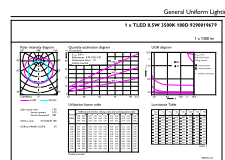
8.5T8/MAS/36-835/IF13/P/DIM 10/1

Product	D1	D2	A1	A2	A3
8.5T8/MAS/36-835/IF13/P/DIM 10/1	1-1/16 in	1-1/16 in	35-3/16 in	35-1/2 in	35-3/4 in

Photometric data

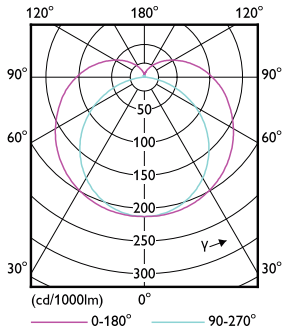


G13 3500K 1300lm



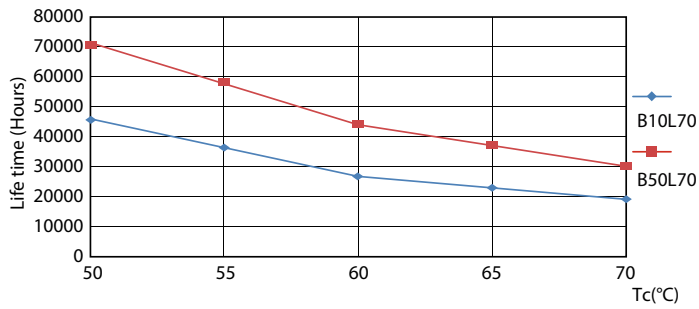
G13 3500K 1300lm

Photometric data

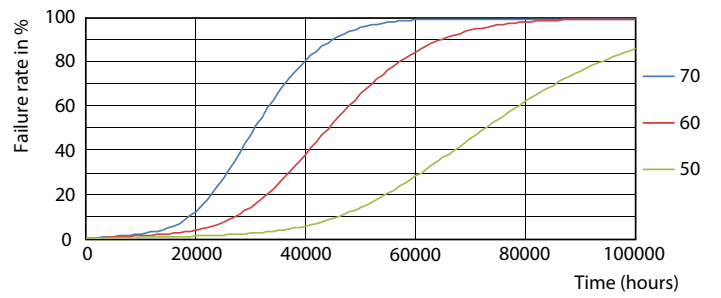


G13 4000K

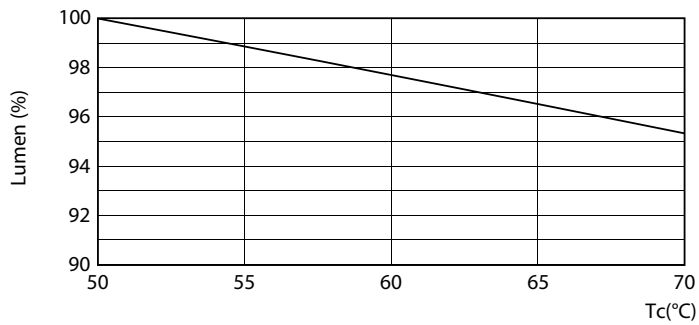
Lifetime



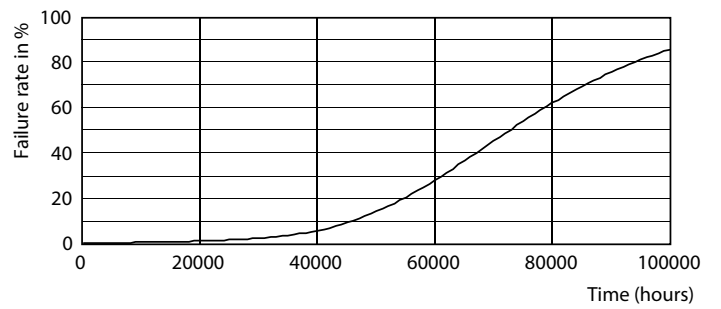
G13 4000K



G13 4000K



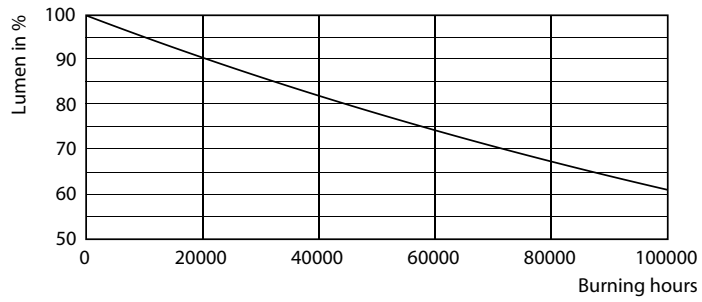
G13 4000K



G13 4000K

T8

Lifetime



G13 4000K

