

# T8

## 11.5T8/COR/36-840/MF14/G 10/1

Philips MainsFit (UL Type B) CorePro T8 LED tubes deliver high-quality, flicker free performance at an affordable price. The UL Type B LED tubes are designed with easy installation and long-term maintenance simplicity in mind. Upgrade your lighting to Philips and realize 50,000 hour LED lifetime backed by a 5-year, full replacement limited warranty.

### Product data

General information		Lamp Current (Min)	
Base	G13 [ Medium Bi-Pin Fluorescent]	47 mA	
EU RoHS compliant	Yes	Wattage Equivalent	
Nominal Lifetime (Nom)	50000 h	25 W	
Switching Cycle	50000	Starting Time (Nom)	
Tier	CorePro	0.9 s	
Light technical		Warm Up Time to 60% Light (Nom)	
Color Code	841 [ CCT of 4100K (841)]	0.9 s	
Beam Angle (Nom)	180 °	UL Type	
Initial lumen (Nom)	1400 lm	Type B - bypass the ballast	
Color Designation	Cool White (CW)	Power Factor (Nom)	
Correlated Color Temperature (Nom)	4000 K	0.9	
Luminous Efficacy (rated) (Nom)	121.00 lm/W	Voltage (Nom)	
Color Consistency	<6	120-277 V	
Color Rendering Index (Nom)	82	Temperature	
LLMF At End Of Nominal Lifetime (Nom)	70 %	T-Ambient (Max)	
Operating and electrical		113 °F	
Input Frequency	50 to 60 Hz	T-Ambient (Min)	
Power (Rated) (Nom)	11.5 W	-4 °F	
Lamp Current (Max)	101 mA	T-Storage (Max)	
Mechanical and housing		149 °F	
Bulb Finish	Frosted	T-Storage (Min)	
Bulb Material	Glass	-40 °F	
Product Length	35-7/16 in	T-Case Maximum (Nom)	
Controls and dimming		122 °F	
Dimmable	No	Controls and dimming	
Mechanical and housing		Dimmable	
Bulb Finish	Frosted	No	
Bulb Material	Glass	Mechanical and housing	
Product Length	35-7/16 in	Bulb Finish	
Controls and dimming		Frosted	
Dimmable	No	Bulb Material	
Mechanical and housing		Glass	
Bulb Finish	Frosted	Product Length	
Bulb Material	Glass	35-7/16 in	
Product Length	35-7/16 in	Controls and dimming	
Controls and dimming		Dimmable	
Dimmable	No	Mechanical and housing	
Mechanical and housing		Bulb Finish	
Bulb Finish	Frosted	Frosted	
Bulb Material	Glass	Bulb Material	
Product Length	35-7/16 in	Glass	

# T8

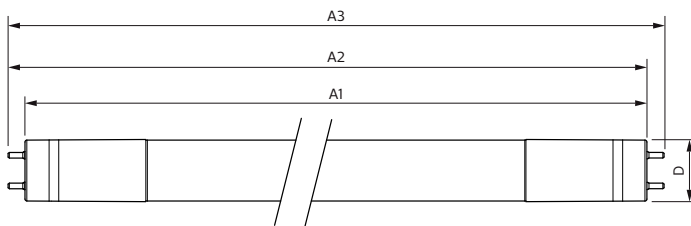
Bulb Shape	Tube, double-ended
<b>Approval and application</b>	
Energy Saving Product	Yes
Approval Marks	UL certificate RoHS compliance DLC compliance
Energy Consumption kWh/1000 h	- kWh
Energy Certifications	DLC Standard

## Product data

Order product name	11.5T8/COR/36-840/MF14/G 10/1
--------------------	-------------------------------

EAN/UPC - Product	046677535513
Order code	535518
Numerator - Quantity Per Pack	1
Numerator - Packs per outer box	10
Material Nr. (12NC)	929001934404
Net Weight (Piece)	0.551 lb
Model Number	9290019344

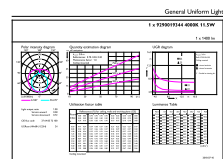
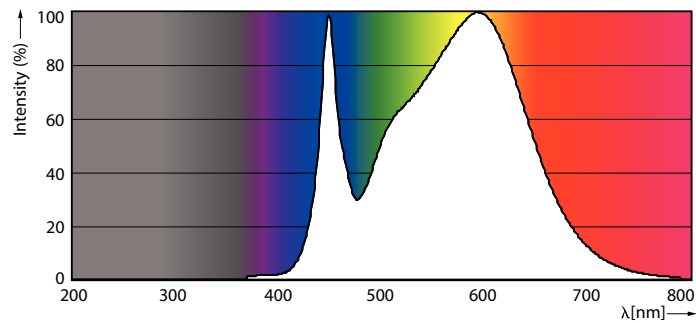
## Dimensional drawing



Product	D	A1	A2	A3
11.5T8/COR/36-840/MF14/G 10/1	1-1/16 in	35-1/4 in	35-1/2 in	35-13/16 in

11.5T8/COR/36-840/MF14/G 10/1

## Photometric data

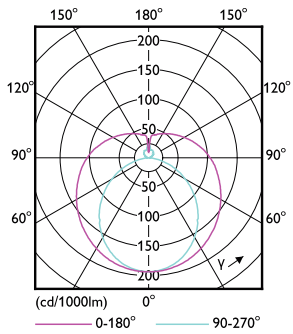


General Uniform Lighting  
1 x 1000154x0008 11.5W  
©2022 Philips Lighting B.V. Philips Lighting B.V. Page 1/1

11.5W G13

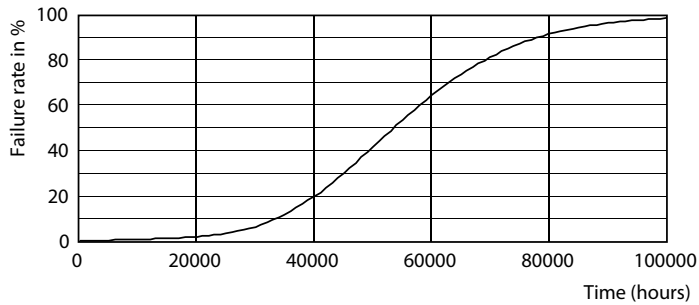
11.5W

Photometric data

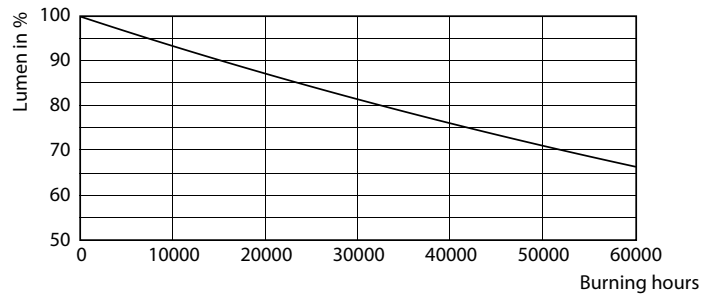


11.5W G13 840

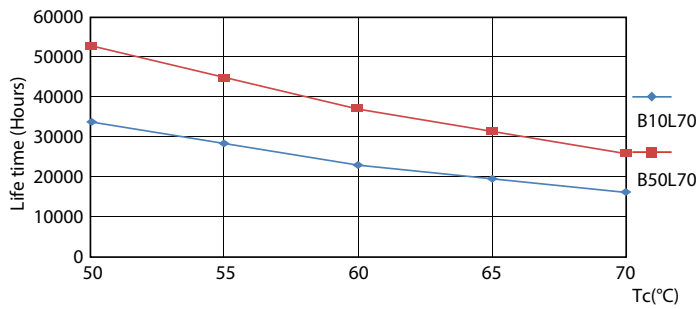
Lifetime



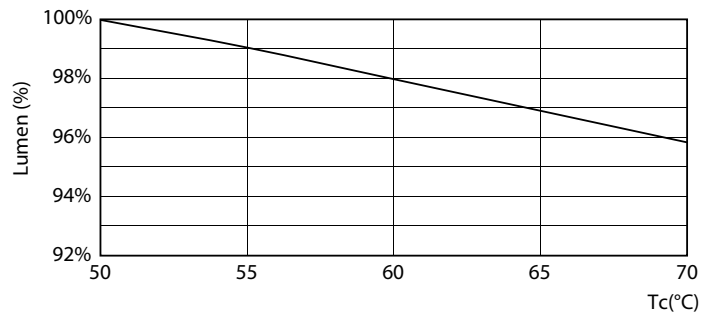
8.5W G13



8.5W G13

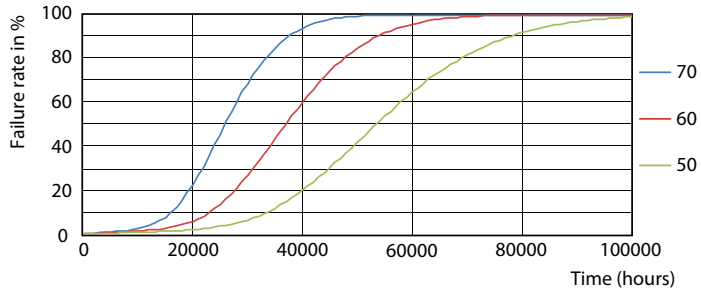


8.5W G13



11.5W

Lifetime



8.5W G13

