

6308-2Z/VA201



Deep groove ball bearing for high temperature applications with shields on both sides

Single row deep groove ball bearings for high temperature applications, with shields on both sides, are designed for challenging operating conditions, with certain variants being capable of performing at temperatures as high as 350 °C (660 °F). They have larger radial internal clearances and use graphite-based lubricants that enable operation at high temperatures. They are lubricated for the life of the bearing and the entire surface of the bearings and shields are manganese phosphate treated, which enhances adhesion of the lubricant to the metal and improves their running-in properties. As with deep groove ball bearings generally, they are particularly versatile, accommodate radial and axial loads in both directions, and are easy to mount.

- Optimized for operation at high temperatures – up to 350 °C (660 °F)
- Easily swapped with grease-lubricated bearings of corresponding ISO dimensions
- Increased reliability, reduced complexity and decreased environmental impact
- Integral sealing prolongs bearing service life
- Typical benefits of single row deep groove ball bearings

Overview

Dimensions

Bore diameter	1.575 in
Outside diameter	3.543 in
Width	0.906 in

Performance

Basic dynamic load rating	9 509 lbf
Basic static load rating	5 395 lbf
Limiting speed	70 r/min
Maximum operating temperature	482 °F

Properties

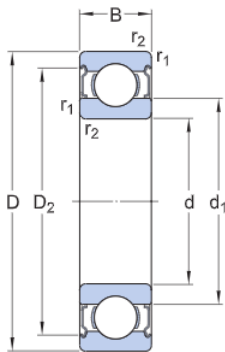
Bore type	Cylindrical
Cage	Sheet metal
Coating	Coated
Filling slots	Without
Locating feature, bearing outer ring	None
Lubricant	Solid lubricant
Matched arrangement	No
Material, bearing	High temperature steel
Number of rows	1
Radial internal clearance	Multiples of C5

Relubrication feature	Without
Sealing	Shield on both sides
Sealing type	Non-contact

Technical Specification

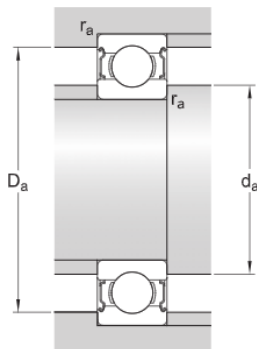
Running in required

Yes



Dimensions

d	1.575 in	Bore diameter
D	3.543 in	Outside diameter
B	0.906 in	Width
d_1	≈ 2.209 in	Shoulder diameter inner ring
D_2	≈ 3.059 in	Recess diameter outer ring shoulder
$r_{1,2}$	min. 0.059 in	Chamfer dimension



Abutment dimensions

d_a	min. 1.929 in	Abutment diameter shaft
d_a	max. 2.205 in	Abutment diameter shaft
D_a	max. 3.189 in	Abutment diameter housing
r_a	max. 0.059 in	Fillet radius

Calculation data

Basic dynamic load rating	C	9 509 lbf
Basic static load rating	C_0	5 395 lbf
Limiting speed		70 r/min
Operating temperature	T	max. 482 °F

Mass

Mass bearing

1.442 lb

Terms and conditions

By accessing and using this website / app owned and published by AB SKF (publ.) (556007-3495 · Gothenburg) ("SKF"), you agree to the following terms and conditions:

Warranty Disclaimer and Limitation of Liability

Although every care has been taken to assure the accuracy of the information on this website / app, SKF provides this information "AS IS" and DISCLAIMS ALL WARRANTIES, EXPRESS OR IMPLIED, INCLUDING, BUT NOT LIMITED TO, IMPLIED WARRANTIES OF MERCHANTABILITY AND FITNESS FOR A PARTICULAR PURPOSE. You acknowledge that your use of this website / app is at your sole risk, that you assume full responsibility for all costs associated with use of this website / app, and that SKF shall not be liable for any direct, incidental, consequential, or indirect damages of any kind arising out of your access to, or use of the information or software made available on this website / app. Any warranties and representations in this website / app for SKF products or services that you purchase or use will be subject to the agreed upon terms and conditions in the contract for such product or service. Further, for non-SKF websites / apps that are referenced in our website / app or where a hyperlink appears, SKF makes no warranties concerning the accuracy or reliability of the information in these websites / apps and assumes no responsibility for material created or published by third parties contained therein. In addition, SKF does not warrant that this website / app or these other linked websites / apps are free from viruses or other harmful elements.

Copyright

Copyright in this website / app copyright of the information and software made available on this website / app rest with SKF or its licensors. All rights are reserved. All licensed material will reference the licensor that has granted SKF the right to use the material. The information and software made available on this website / app may not be reproduced, duplicated, copied, transferred, distributed, stored, modified, downloaded or otherwise exploited for any commercial use without the prior written approval of SKF. However, it may be reproduced, stored and downloaded for use by individuals without prior written approval of SKF. Under no circumstances may this information or software be supplied to third parties.

This website /app includes certain images used under license from Shutterstock, Inc.

Trademarks and Patents

All trademarks, brand names, and corporate logos displayed on the website / app are the property of SKF or its licensors, and may not be used in any way without prior written approval by SKF. All licensed trademarks published on this website / app reference the licensor that has granted SKF the right to use the trademark. Access to this website / app does not grant to the user any license under any patents owned by or licensed to SKF.

Changes

SKF reserves the right to make changes or additions to this website / app at any time.