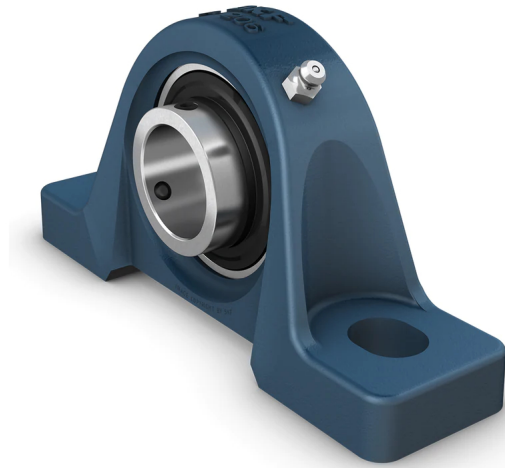


# P2BM 115-TF

Pillow block ball bearing unit with extended inner ring and set screw locking, cast iron, North American standards

Pillow (plummer) block ball bearing units consist of an insert bearing mounted in a cast iron housing that can be bolted to a support surface. This variant is suitable for applications with both constant and alternating directions of rotation. It has an inner ring extended on both sides and is locked onto the shaft by tightening a set screw on the inner ring, making it easy to mount.

- Strong
- Designed for a constant and alternating rotation
- Ready to mount
- Lubricated and sealed bearing
- Quick locking onto the shaft
- Cost-effective



## Overview

### Dimensions

|                                    |          |
|------------------------------------|----------|
| Bearing width, total               | 2.189 in |
| Centre distance between bolt holes | 6.719 in |
| Centre height (pillow block)       | 2.5 in   |
| Housing overall width              | 2.319 in |
| Shaft diameter                     | 1.938 in |

### Performance

|                           |  |
|---------------------------|--|
| Basic dynamic load rating | 9 802 lbf                              |
| Basic static load rating  | 6 519 lbf                              |
| Limiting speed            | 3 600 r/min                            |
| Note                      | Limiting speed with shaft tolerance h6 |

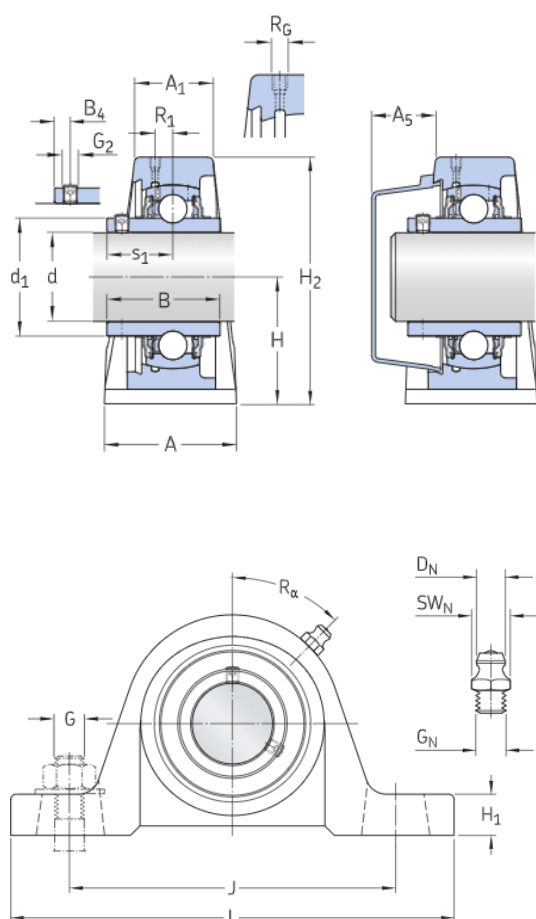
### Properties

|                                    |               |
|------------------------------------|---------------|
| Bore type                          | Cylindrical   |
| Coating                            | Without       |
| Fastening bolt hole type           | Plain         |
| Grease fitting                     | With          |
| Housing type                       | Pillow block  |
| Lubricant                          | Grease        |
| Material, bearing                  | Bearing steel |
| Material, housing                  | Cast iron     |
| Number of bolt holes for fasteners | 2             |
| Relubrication hole                 | With          |

|                               |                                |
|-------------------------------|--------------------------------|
| Retaining feature, inner ring | Set screws                     |
| Rubber seating ring           | Without                        |
| Sealing type                  | Contact, standard              |
| Sealing, bearing              | Seal and flinger on both sides |
| Sealing, unit                 | Optional end cover             |

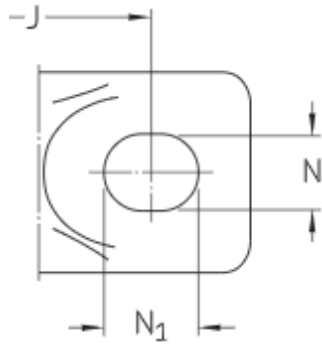
# Technical Specification

|                          |                                    |
|--------------------------|------------------------------------|
| Compliance with standard | North American standard            |
| Purpose specific         | For material handling applications |
| Material, housing        | Cast iron                          |
| Sealing, bearing         | Seal and flinger on both sides     |
| Sealing type, bearing    | Contact, standard                  |
| Sealing, unit            | Optional end cover                 |
| Coating                  | Without                            |



## Dimensions

|                |               |  |
|----------------|---------------|--|
| d              | 1.938 in      | Bore diameter  |
| d <sub>1</sub> | ≈ 2.719 in    | Shoulder diameter of inner ring                          |
| A              | 2.319 in      | Base width   |
| A <sub>1</sub> | 1.362 in      | Top width  |
| A <sub>5</sub> | 1.339 in      | Standout of end cover                                    |
| B              | 2.189 in      | Width of inner ring                                      |
| B <sub>4</sub> | 0.354 in      | Distance from locking device side face to thread centre  |
| H              | 2.5 in        | Height of spherical seat centre                          |
| H <sub>1</sub> | 0.875 in      | Foot height  |
| H <sub>2</sub> | 4.969 in      | Overall height   |
| J              | 6.719 in      | Distance between attachment bolts                        |
| J              | max. 6.969 in | Distance between attachment bolts                        |
| J              | min. 6.469 in | Distance between attachment bolts                        |
| L              | 8.625 in      | Overall length   |
| N              | 0.781 in      | Diameter of attachment bolt hole                         |
| N <sub>1</sub> | 0.875 in      | Length of attachment bolt hole                           |
| s <sub>1</sub> | 1.315 in      | Distance from locking device side face to raceway centre |



#### Threaded hole

|                  |  |
|------------------|--|
| $R_G$ 1/8-27 NPT | Housing thread for the grease fitting  |
| $R_1$ 0.138 in   | Axial position of the housing thread   |
| $R_0$ 45 °       | Angular position of the housing thread |

#### Grease fitting

|                  |   |
|------------------|---|
| $D_f$ 0.259 in   | Diameter of head sphere of grease fitting |
| $S_f$ 0.438 in   | Hexagonal key size for the grease fitting |
| $G_f$ 1/8-27 NPT | Thread of grease fitting                  |

### Calculation data

|                           |       |  |
|---------------------------|-------|--|
| Basic dynamic load rating | C     | 9 802 lbf                              |
| Basic static load rating  | $C_0$ | 6 519 lbf                              |
| Fatigue load limit        | $P_u$ | 281 lbf                                |
| Limiting speed            |       | 3 600 r/min                            |
|                           |       | Limiting speed with shaft tolerance h6 |

### Mass

|                   |          |
|-------------------|----------|
| Mass bearing unit | 8.267 lb |
|-------------------|----------|

### Mounting information

|   |       |                |
|---|-------|----------------|
| Set screw                                       | $G_2$ | 3/8-24 UNF     |
| Hexagonal key size for set screw                |       | 0.188 in       |
| Recommended tightening torque for set screw     |       | 146.037 lbf-in |
| Recommended diameter for attachment bolts, mm   | G     | 16.002 mm      |
| Recommended diameter for attachment bolts, inch | G     | 0.625 in       |

### Included products

|         |                |
|---------|----------------|
| Housing | P2B 511        |
| Bearing | YAR 211-115-2F |

### Associated products

|           |         |
|-----------|---------|
| End cover | ECY 211 |
|-----------|---------|

# Terms and conditions

By accessing and using this website / app owned and published by AB SKF (publ.) (556007-3495 · Gothenburg) ("SKF"), you agree to the following terms and conditions:

## Warranty Disclaimer and Limitation of Liability

Although every care has been taken to assure the accuracy of the information on this website / app, SKF provides this information "AS IS" and DISCLAIMS ALL WARRANTIES, EXPRESS OR IMPLIED, INCLUDING, BUT NOT LIMITED TO, IMPLIED WARRANTIES OF MERCHANTABILITY AND FITNESS FOR A PARTICULAR PURPOSE. You acknowledge that your use of this website / app is at your sole risk, that you assume full responsibility for all costs associated with use of this website / app, and that SKF shall not be liable for any direct, incidental, consequential, or indirect damages of any kind arising out of your access to, or use of the information or software made available on this website / app. Any warranties and representations in this website / app for SKF products or services that you purchase or use will be subject to the agreed upon terms and conditions in the contract for such product or service. Further, for non-SKF websites / apps that are referenced in our website / app or where a hyperlink appears, SKF makes no warranties concerning the accuracy or reliability of the information in these websites / apps and assumes no responsibility for material created or published by third parties contained therein. In addition, SKF does not warrant that this website / app or these other linked websites / apps are free from viruses or other harmful elements.

## Copyright

Copyright in this website / app copyright of the information and software made available on this website / app rest with SKF or its licensors. All rights are reserved. All licensed material will reference the licensor that has granted SKF the right to use the material. The information and software made available on this website / app may not be reproduced, duplicated, copied, transferred, distributed, stored, modified, downloaded or otherwise exploited for any commercial use without the prior written approval of SKF. However, it may be reproduced, stored and downloaded for use by individuals without prior written approval of SKF. Under no circumstances may this information or software be supplied to third parties.

This website /app includes certain images used under license from Shutterstock, Inc.

## Trademarks and Patents

All trademarks, brand names, and corporate logos displayed on the website / app are the property of SKF or its licensors, and may not be used in any way without prior written approval by SKF. All licensed trademarks published on this website / app reference the licensor that has granted SKF the right to use the trademark. Access to this website / app does not grant to the user any license under any patents owned by or licensed to SKF.

## Changes

SKF reserves the right to make changes or additions to this website / app at any time.