

YET 210



Insert bearing with an eccentric locking collar and narrow inner ring

Insert bearings are based on sealed deep groove ball bearings. This variant is intended for use in applications where the direction of rotation is constant. It has a narrow inner ring extended on one side, with an eccentric locking collar, enabling quick and easy mounting onto the shaft.

- Designed for rotation in one direction
- Quick and easy to mount onto the shaft
- Long service life
- Reduce noise and vibration levels

Overview

Dimensions

Bore diameter	1.969 in
Outside diameter	3.543 in
Width, inner ring	1.189 in
Width, outer ring	0.866 in
Width, total	1.72 in

Performance

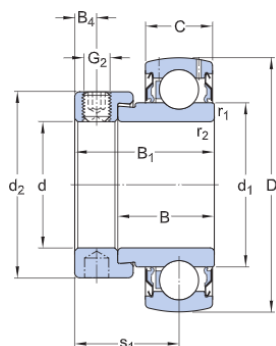
Basic dynamic load rating	7 891 lbf
Basic static load rating	5 216 lbf
Limiting speed	4 000 r/min

Note Limiting speed with shaft tolerance h6

Properties

Bore type	Cylindrical
Cage	Non-metallic
Coating	Without
Inner ring extension	On one side
Lubricant	Grease
Material, bearing	Bearing steel
Outer ring type	Spherical
Relubrication feature	With
Retaining feature, inner ring	Eccentric collar
Rolling elements	Balls
Rubber seating ring	Without
Sealing	Seal on both sides
Sealing type	Contact, standard

Technical Specification



Dimensions

d	1.969 in	Bore diameter
D	3.543 in	Outside diameter
B ₁	1.72 in	Overall bearing width
B	1.189 in	Width of inner ring
C	0.866 in	Width of outer ring
d ₁	≈ 2.461 in	Outside diameter of inner ring
d ₂	2.646 in	Outside diameter of locking collar
B ₄	0.266 in	Distance from side face to thread centre
r _{1,2}	min. 0.039 in	Chamfer dimension of inner ring
s ₁	1.287 in	Distance from locking device side face to raceway centre

Calculation data

Basic dynamic load rating	C	7 891 lbf
Basic static load rating	C ₀	5 216 lbf
Fatigue load limit	P _u	220 lbf
Limiting speed		4 000 r/min
		Limiting speed with shaft tolerance h ₆
Calculation factor	f ₀	14

Mass

Mass	1.609 lb
------	----------

Mounting information

Set screw	G ₂	M10x1
Hexagonal key size for set screw	N	0.197 in

Recommended tightening torque for set screw

146.037 lbf-in

Associated products

Rubber seating ring

RIS 210 A

Terms and conditions

By accessing and using this website / app owned and published by AB SKF (publ.) (556007-3495 · Gothenburg) ("SKF"), you agree to the following terms and conditions:

Warranty Disclaimer and Limitation of Liability

Although every care has been taken to assure the accuracy of the information on this website / app, SKF provides this information "AS IS" and DISCLAIMS ALL WARRANTIES, EXPRESS OR IMPLIED, INCLUDING, BUT NOT LIMITED TO, IMPLIED WARRANTIES OF MERCHANTABILITY AND FITNESS FOR A PARTICULAR PURPOSE. You acknowledge that your use of this website / app is at your sole risk, that you assume full responsibility for all costs associated with use of this website / app, and that SKF shall not be liable for any direct, incidental, consequential, or indirect damages of any kind arising out of your access to, or use of the information or software made available on this website / app. Any warranties and representations in this website / app for SKF products or services that you purchase or use will be subject to the agreed upon terms and conditions in the contract for such product or service. Further, for non-SKF websites / apps that are referenced in our website / app or where a hyperlink appears, SKF makes no warranties concerning the accuracy or reliability of the information in these websites / apps and assumes no responsibility for material created or published by third parties contained therein. In addition, SKF does not warrant that this website / app or these other linked websites / apps are free from viruses or other harmful elements.

Copyright

Copyright in this website / app copyright of the information and software made available on this website / app rest with SKF or its licensors. All rights are reserved. All licensed material will reference the licensor that has granted SKF the right to use the material. The information and software made available on this website / app may not be reproduced, duplicated, copied, transferred, distributed, stored, modified, downloaded or otherwise exploited for any commercial use without the prior written approval of SKF. However, it may be reproduced, stored and downloaded for use by individuals without prior written approval of SKF. Under no circumstances may this information or software be supplied to third parties.

This website /app includes certain images used under license from Shutterstock, Inc.

Trademarks and Patents

All trademarks, brand names, and corporate logos displayed on the website / app are the property of SKF or its licensors, and may not be used in any way without prior written approval by SKF. All licensed trademarks published on this website / app reference the licensor that has granted SKF the right to use the trademark. Access to this website / app does not grant to the user any license under any patents owned by or licensed to SKF.

Changes

SKF reserves the right to make changes or additions to this website / app at any time.