

6207

Deep groove ball bearing

Single row deep groove ball bearings are particularly versatile, have low friction and are optimized for low noise and low vibration, which enables high rotational speeds. They accommodate radial and axial loads in both directions, are easy to mount, and require less maintenance than many other bearing types.

- Simple, versatile and robust design
- Low friction
- High-speed capability
- Accommodate radial and axial loads in both directions
- Require little maintenance



Overview

Dimensions

Bore diameter	1.378 in
Outside diameter	2.835 in
Width	0.669 in

Performance

Basic dynamic load rating	6 070 lbf
Basic static load rating	3 440 lbf
Limiting speed	13 000 r/min
Reference speed	20 000 r/min
SKF performance class	SKF Explorer

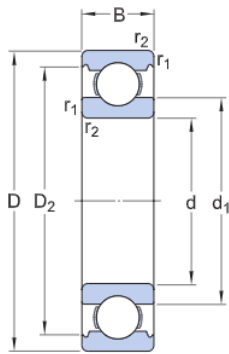
Properties

Bore type	Cylindrical
Cage	Sheet metal
Coating	Without
Filling slots	Without
Locating feature, bearing outer ring	None
Lubricant	None
Matched arrangement	No
Material, bearing	Bearing steel
Number of rows	1
Radial internal clearance	CN
Relubrication feature	Without
Sealing	Without

Technical Specification

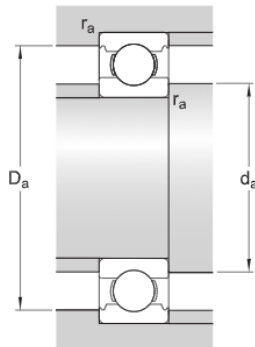
SKF performance class

SKF Explorer



Dimensions

d	1.378 in	Bore diameter
D	2.835 in	Outside diameter
B	0.669 in	Width
d_1	≈ 1.848 in	Shoulder diameter
D_2	≈ 2.4681 in	Recess diameter
$r_{1,2}$	min. 0.043 in	Chamfer dimension



Abutment dimensions

d_a	min. 1.654 in	Diameter of shaft abutment
D_a	max. 2.559 in	Diameter of housing abutment
r_a	max. 0.039 in	Radius of shaft or housing fillet

Calculation data

Basic dynamic load rating	C	6 070 lbf
Basic static load rating	C_0	3 440 lbf
Fatigue load limit	P_u	147 lbf
Reference speed		20 000 r/min

Limiting speed		13 000 r/min
Minimum load factor	k_r	0.025
Calculation factor	f_0	13.8

Mass

Mass bearing		0.636 lb
--------------	--	----------

Tolerance class

Dimensional tolerances		P6
Radial run-out		P6

Terms and conditions

By accessing and using this website / app owned and published by AB SKF (publ.) (556007-3495 · Gothenburg) ("SKF"), you agree to the following terms and conditions:

Warranty Disclaimer and Limitation of Liability

Although every care has been taken to assure the accuracy of the information on this website / app, SKF provides this information "AS IS" and DISCLAIMS ALL WARRANTIES, EXPRESS OR IMPLIED, INCLUDING, BUT NOT LIMITED TO, IMPLIED WARRANTIES OF MERCHANTABILITY AND FITNESS FOR A PARTICULAR PURPOSE. You acknowledge that your use of this website / app is at your sole risk, that you assume full responsibility for all costs associated with use of this website / app, and that SKF shall not be liable for any direct, incidental, consequential, or indirect damages of any kind arising out of your access to, or use of the information or software made available on this website / app. Any warranties and representations in this website / app for SKF products or services that you purchase or use will be subject to the agreed upon terms and conditions in the contract for such product or service. Further, for non-SKF websites / apps that are referenced in our website / app or where a hyperlink appears, SKF makes no warranties concerning the accuracy or reliability of the information in these websites / apps and assumes no responsibility for material created or published by third parties contained therein. In addition, SKF does not warrant that this website / app or these other linked websites / apps are free from viruses or other harmful elements.

Copyright

Copyright in this website / app copyright of the information and software made available on this website / app rest with SKF or its licensors. All rights are reserved. All licensed material will reference the licensor that has granted SKF the right to use the material. The information and software made available on this website / app may not be reproduced, duplicated, copied, transferred, distributed, stored, modified, downloaded or otherwise exploited for any commercial use without the prior written approval of SKF. However, it may be reproduced, stored and downloaded for use by individuals without prior written approval of SKF. Under no circumstances may this information or software be supplied to third parties.

This website /app includes certain images used under license from Shutterstock, Inc.

Trademarks and Patents

All trademarks, brand names, and corporate logos displayed on the website / app are the property of SKF or its licensors, and may not be used in any way without prior written approval by SKF. All licensed trademarks published on this website / app reference the licensor that has granted SKF the right to use the trademark. Access to this website / app does not grant to the user any license under any patents owned by or licensed to SKF.

Changes

SKF reserves the right to make changes or additions to this website / app at any time.