

# SIEMENS

## SIMATIC IPC MD-34A Vehicle Docking Product Information

### Package Content

Scope of delivery:

- Vehicle Docking × 1
- Key × 2
- Screws for VESA mount × 4
- Power Cable (Cigarette Receptance to Terminal Block) × 1



- Terminal Block Plug × 1



- Power Connector Cable × 1



### Design of product

Device in desk docking



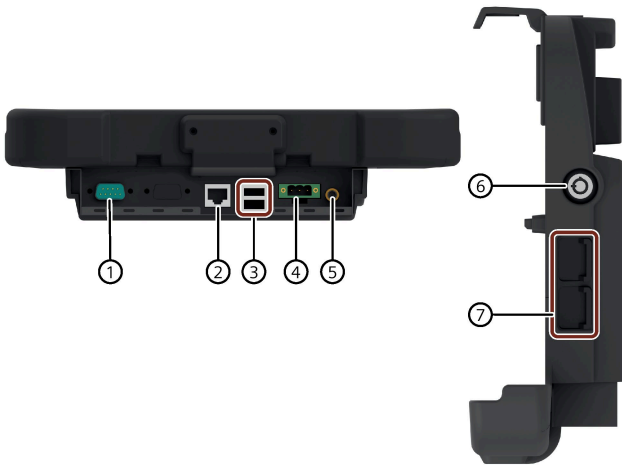
Front view



Back view



## Interfaces



- ① RS-232 connection
- ② 1 × RJ45 Ethernet connection for 10/100 Mbps
- ③ 2 × USB 2.0 port
- ④ DC in (Terminal block) 9 – 36 V
- ⑤ SMA for External GPS Antenna
- ⑥ Lock
- ⑦ 2 × USB 2.0 port

## Powering the Vehicle Docking

The vehicle docking's input/output expansion functions will only work if power is connected.

According to different scenarios, perform the following steps:

- When you are in the car:
  1. Use the power Cable, assembly with Terminal Block Plug
  2. Put the car cigarette receptance plug to connect the car in order to get power
  3. Connect the green terminal block to MD-34A
- When you are not in the car with normal power plug is available with MD-34A installed onto Vehicle Docking
  1. Use the Power Connector (the one with a black female power connector)
  2. Connect Power Adapter to Power Connector
  3. Connect the green terminal block to MD-34A

## Inserting the IPC MD-34A



Perform the following steps:

1. With screen side facing out and docking connector down, insert the IPC into the alignment ports on vehicle docking cradle.
2. Make sure the IPC's backside is aligned upright against the vehicle mount. Reposition if the tablet still moves around.
3. Secure the tablet by carefully pushing down the hook from the backside of the vehicle dock. Clasp with four fingers and further push down the hook with your palm and push it hard until you hear a "click" sound and the latch is fully engaged.

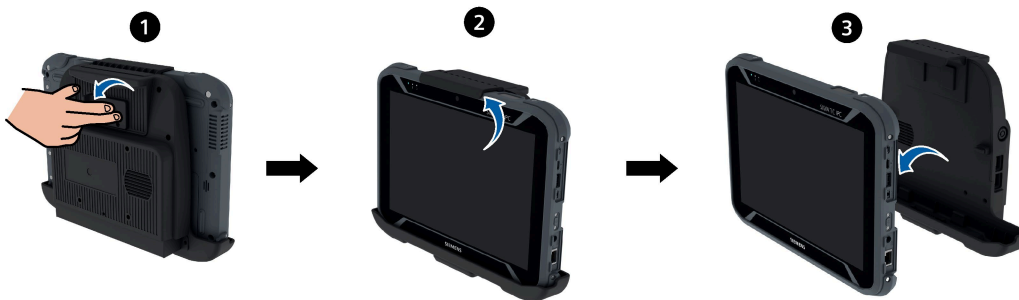
---

**Note**

Place the palm on the rib of the vehicle docking for easier installation.

---

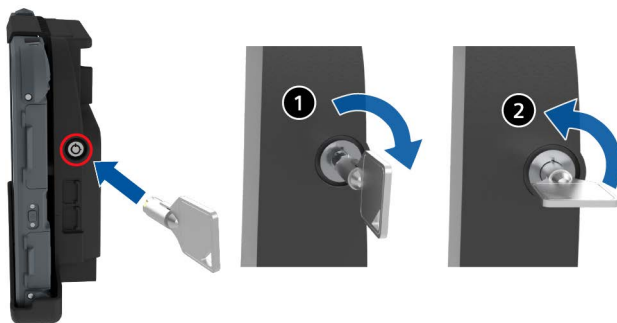
## Removing the IPC MD-34A



Perform the following steps:

1. Reach for the latch on the back of the vehicle docking and pull it sideways.
2. The top hook should be released after the latch is pulled.
3. Tilt the tablet slightly forward first, and then pull the tablet straight up to remove it.

## Lock the IPC MD-34A with Vehicle Docking



- Unlock the IPC MD-34A:  
Insert the key into the keyhole and turn it 90 degrees clockwise to the right **1**.
- Lock the IPC MD-34A:  
Insert the key into the keyhole and turn it 90 degrees counterclockwise to the left **2**.

Siemens AG  
Digital Industries  
Postfach 48 48  
90026 NÜRNBERG  
GERMANY

SIMATIC IPC MD-34A Vehicle  
Docking A5E52427529-AA, 08/2023